

Legend

Main Roads

LGA boundaries

LGA boundaries

CMA boundaries

Vegetation Formations (Tozer et al 2006)
(Pre 1750 in solid colour, extant in pastel)

Dry Sclerophyll Forest (Grass/shrub subformation)

Dry Sclerophyll Forest (shrubby subformation)

Forested Wetlands

Freshwater Wetlands

Grasslands

Grassy Woodlands

Heathlands

Rainforests

Wet Sclerophyll Forests (grassy subformation)

Wet Sclerophyll Forests (shrubby subformation)

Prepared by: JL
Approved by: AM
Status: Final Draft
Projection: AMG Zone 55
Date: 4/04/2007

1:300,000

0

2

4

8

12

16

Kilometers

eco logical AUSTRALIA

GOULBURN MULWAREE COUNCIL

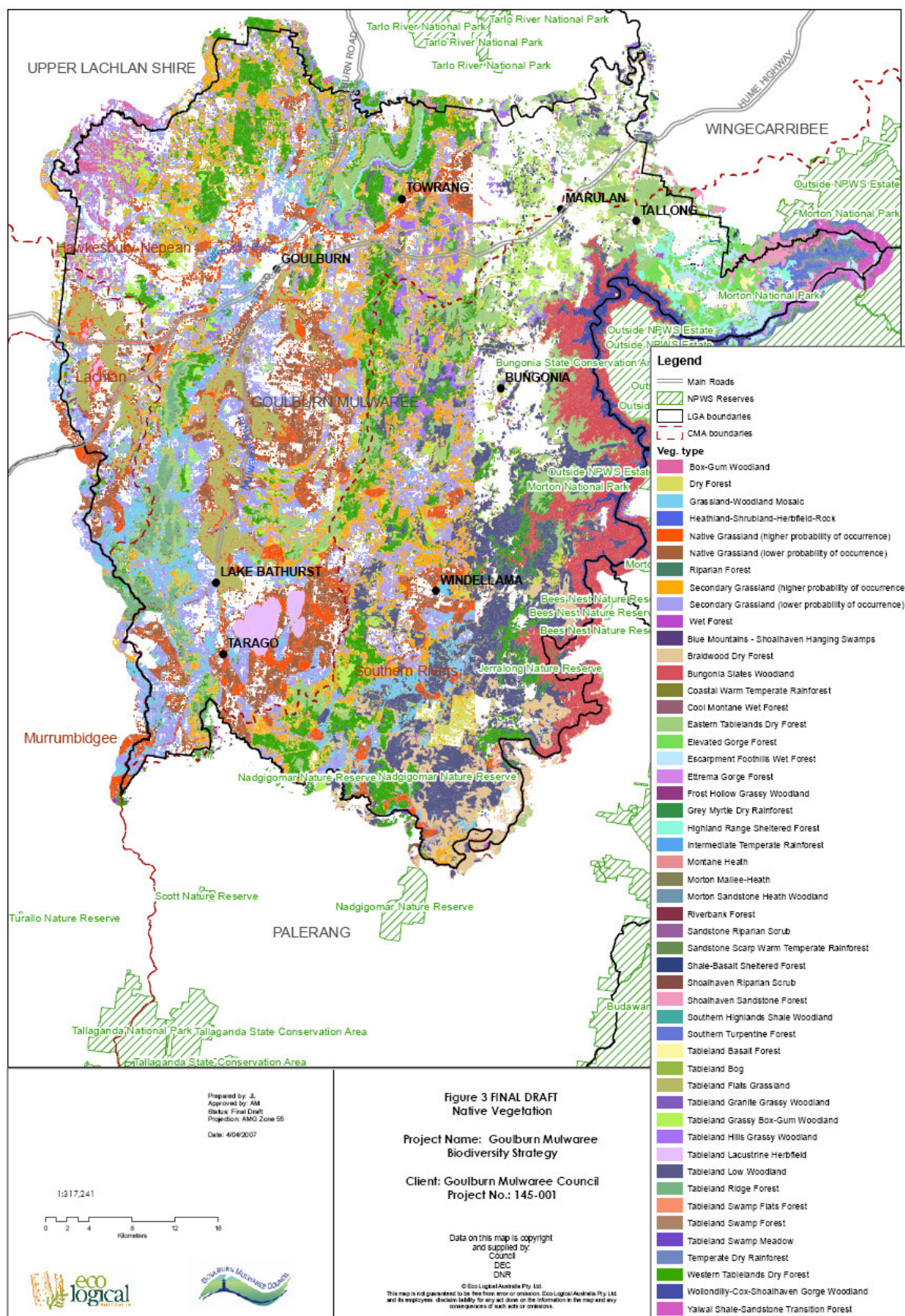
Figure 2 FINAL DRAFT
Pre 1750 and current (extant)
Vegetation Formations

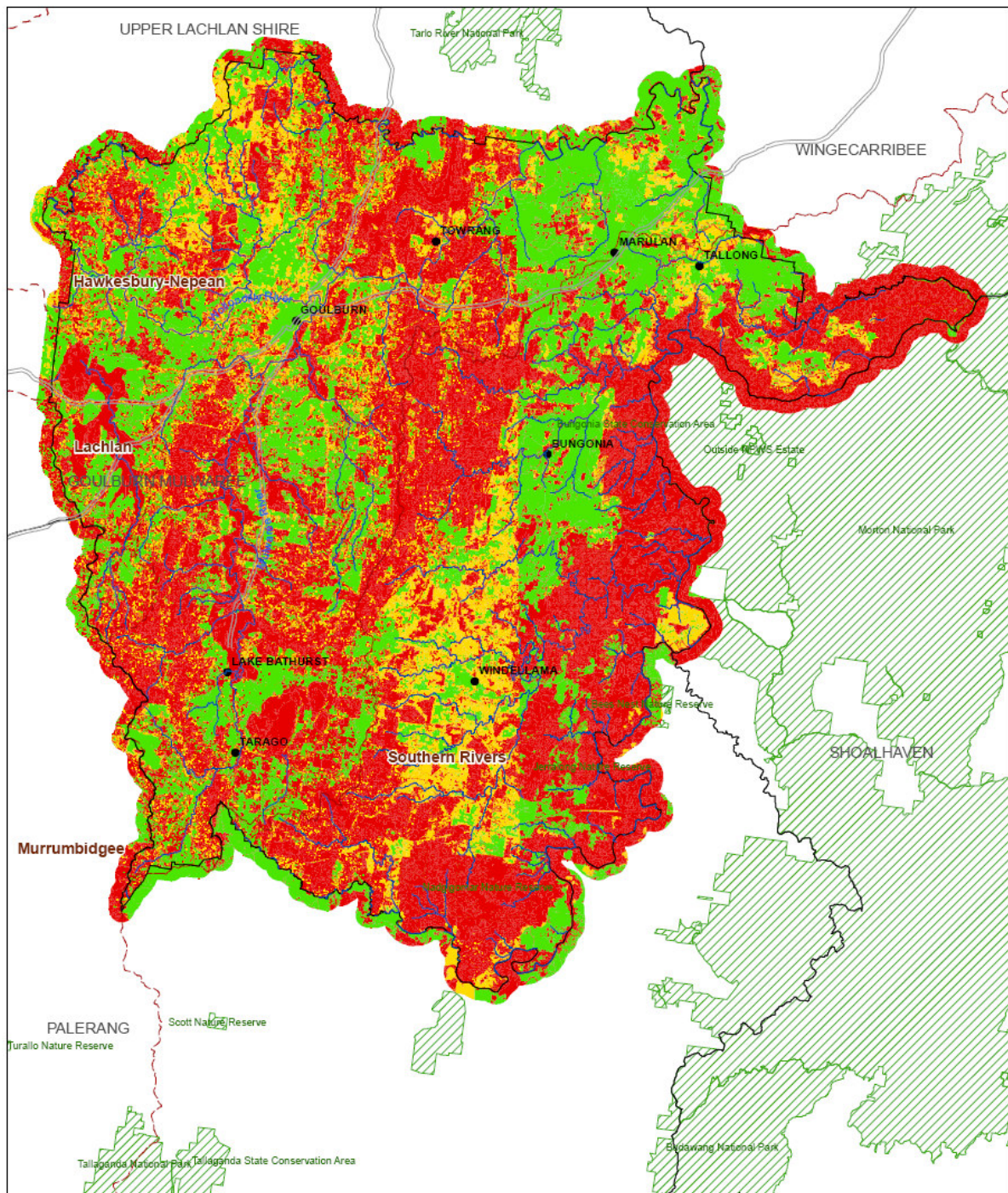
Project Name: Goulburn Mulwaree
Biodiversity Strategy

Client: Goulburn Mulwaree Council
Project No.: 145-001

Data on this map is copyright
and supplied by:
Council
DEC
DNR

© Eco Logical Australia Pty. Ltd.
This map is not guaranteed to be free from error or omission. Eco Logical Australia Pty. Ltd.
and its employees disclaim liability for any act done on the information in the map and any
consequences of such acts or omissions.

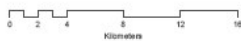




Prepared by: JL
 Approved by: AM
 Status: Final Draft
 Projection: MGA Zone 55
 Date: 4/04/2007



1:300,000



**Figure 4 FINAL DRAFT
 Conservation Values**

**Project Name: Goulburn Mulwaree
 Biodiversity Strategy**

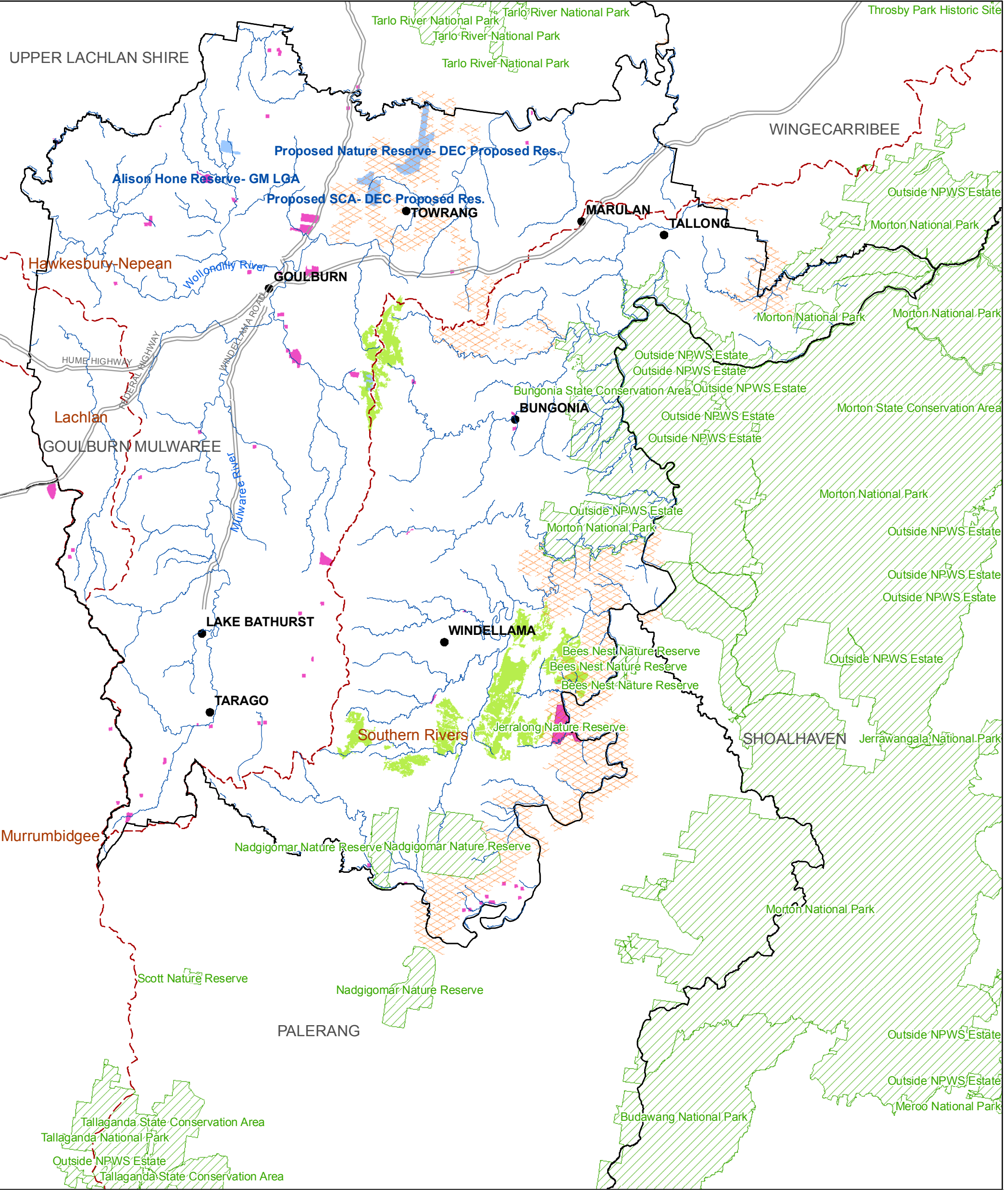
**Client: Goulburn Mulwaree Council
 Project No.: 145-001**

Data on this map is copyright
 and supplied by:
 Council
 DEC
 DNR

© Eco Logical Australia Pty. Ltd.
 This map is not guaranteed to be free from error or omission. Eco Logical Australia Pty. Ltd.
 and its employees disclaim liability for any and all consequences of such acts or omissions.

Conservation Value

- HCV
- MCV
- LCV
- NPWS Reserves
- Main Roads
- LGA boundaries
- CMA boundaries
- River/Streams



Prepared by: JL
Approved by: AM
Status: Final Draft
Projection: AMG Zone 55
Date: 13/04/2007

1:306,809



**Figure 5 FINAL DRAFT
Regional Corridors,
Biodiversity Hotspots
and Reserves**

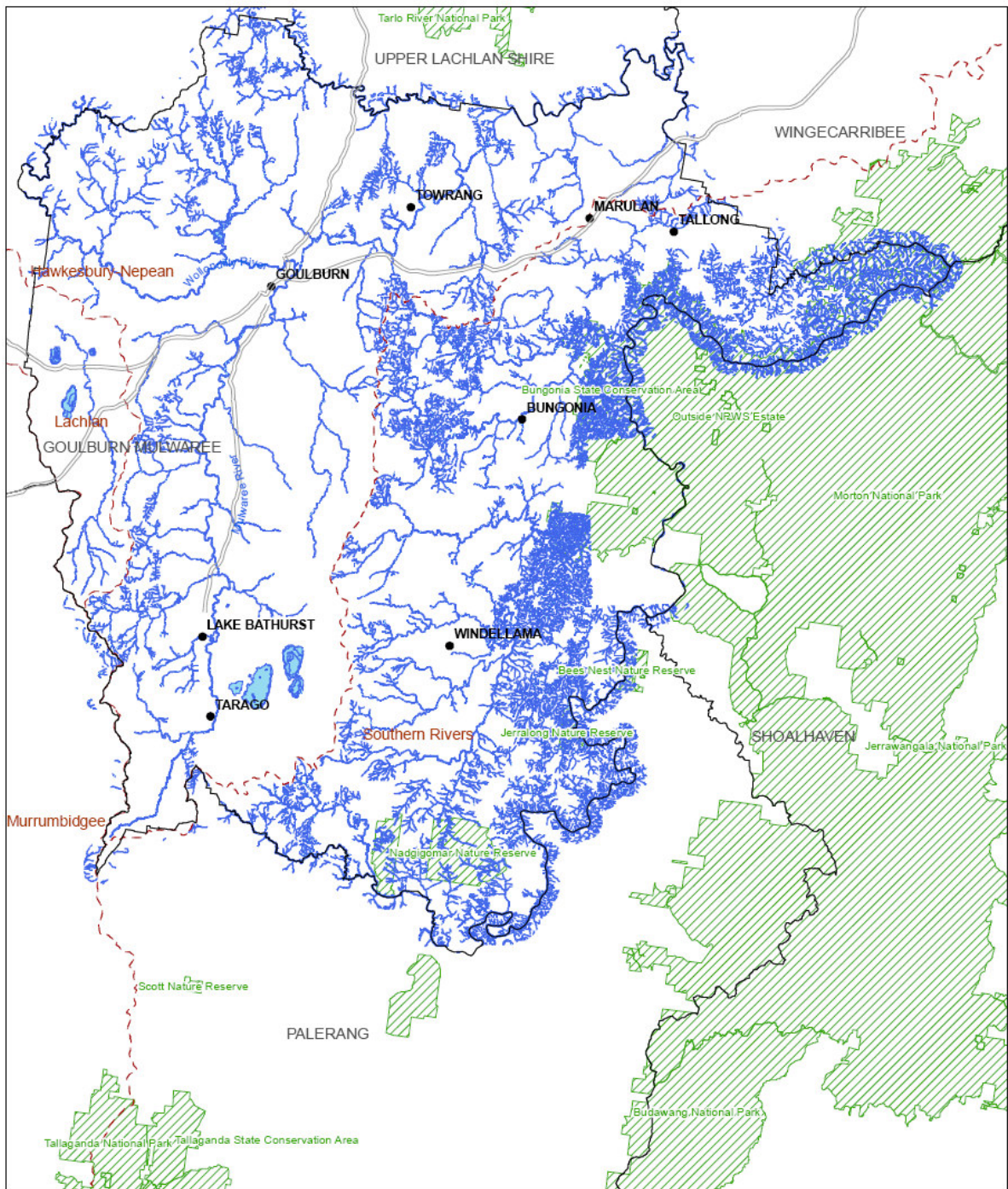
**Project Name: Goulburn Mulwaree
Biodiversity Strategy**

**Client: Goulburn Mulwaree Council
Project No.: 145-001**

Data on this map is copyright
and supplied by:
Council
DEC
DNR

© Eco Logical Australia Pty. Ltd.
This map is not guaranteed to be free from error or omission. Eco Logical Australia Pty. Ltd.
and its employees disclaim liability for any act done on the information in the map and any
consequences of such acts or omissions.

- Regional Corridors
- Flora Hotspots
- Known Conservation Value Hotspots
- Proposed Reserves & Non-stat. Reserve
- NPWS Reserves
- CMA boundaries
- LGA boundaries
- Rivers/Streams
- Main Roads
- Towns



Prepared by: J.L.
 Approved by: AM
 Status: Final Draft
 Projection: AMG Zone 55
 Date: 4/04/2007

1:300,000
 0 2 4 8 12 16
 Kilometers



Figure 6 FINAL DRAFT **Riparian Zones (including Wetlands)**

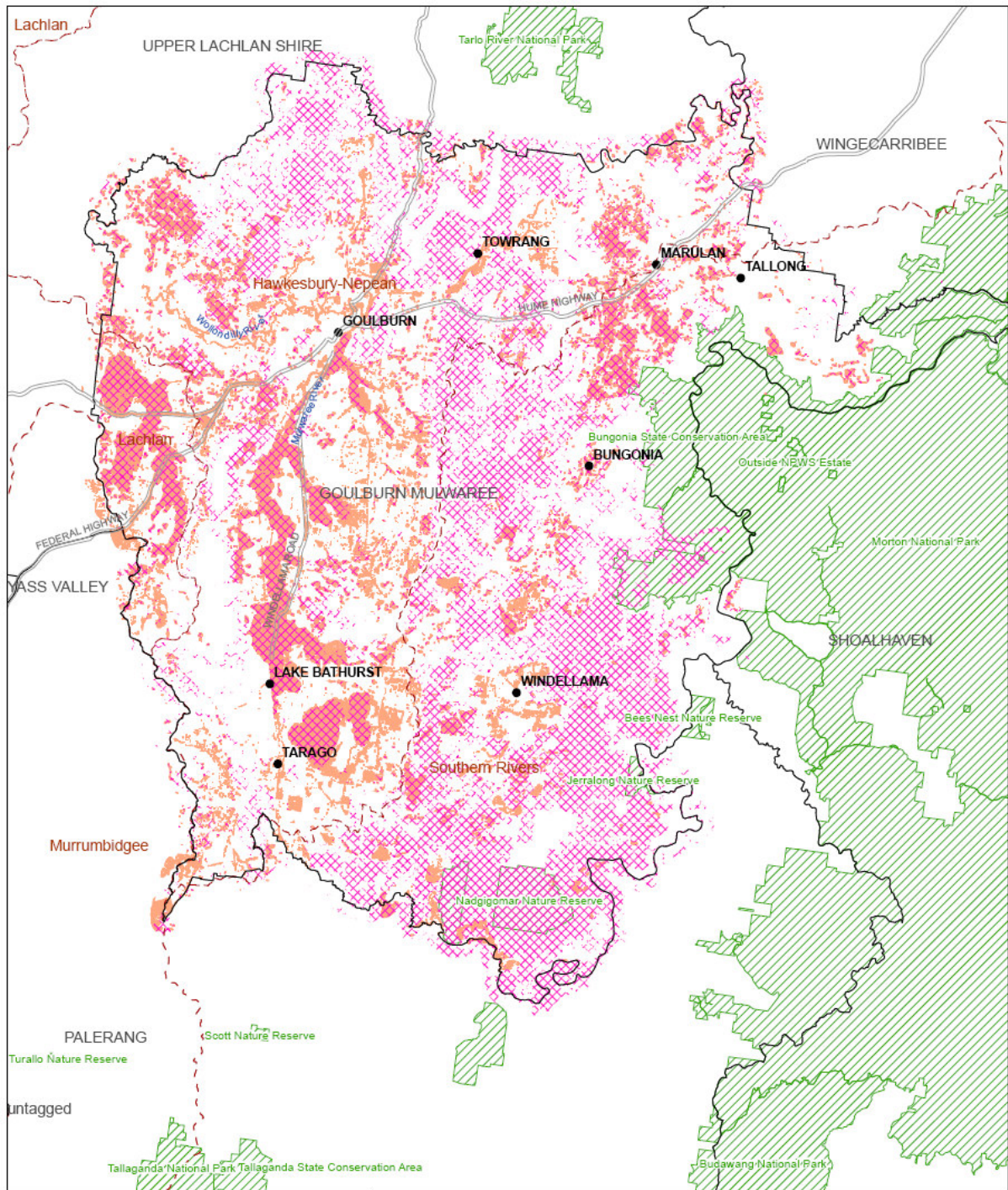
Project Name: Goulburn Mulwaree
 Biodiversity Strategy

Client: Goulburn Mulwaree Council
Project No.: 145-001

Data on this map is copyright
 and supplied by:
 Council
 DEC
 DNR

© Eco Logical Australia Pty Ltd.
 This map is not guaranteed to be free from error or omission. Eco Logical Australia Pty Ltd.
 and its employees disclaim liability for any action or omission on the information in this map and any
 consequences of such action or omission.

- Main Roads
- NPWS Reserves
- LGA boundaries
- CMA boundaries
- Riparian Zones (incl. Wetlands)



Prepared by: JL
 Approved by: AM
 Status: Final Draft
 Projection: AMG Zone 55
 Date: 4/04/2007

1:300,000
 0 2 4 8 12 16
 Kilometers



Figure 8 FINAL DRAFT **Vegetation that is <15% reserved** **and over-cleared vegetation types**

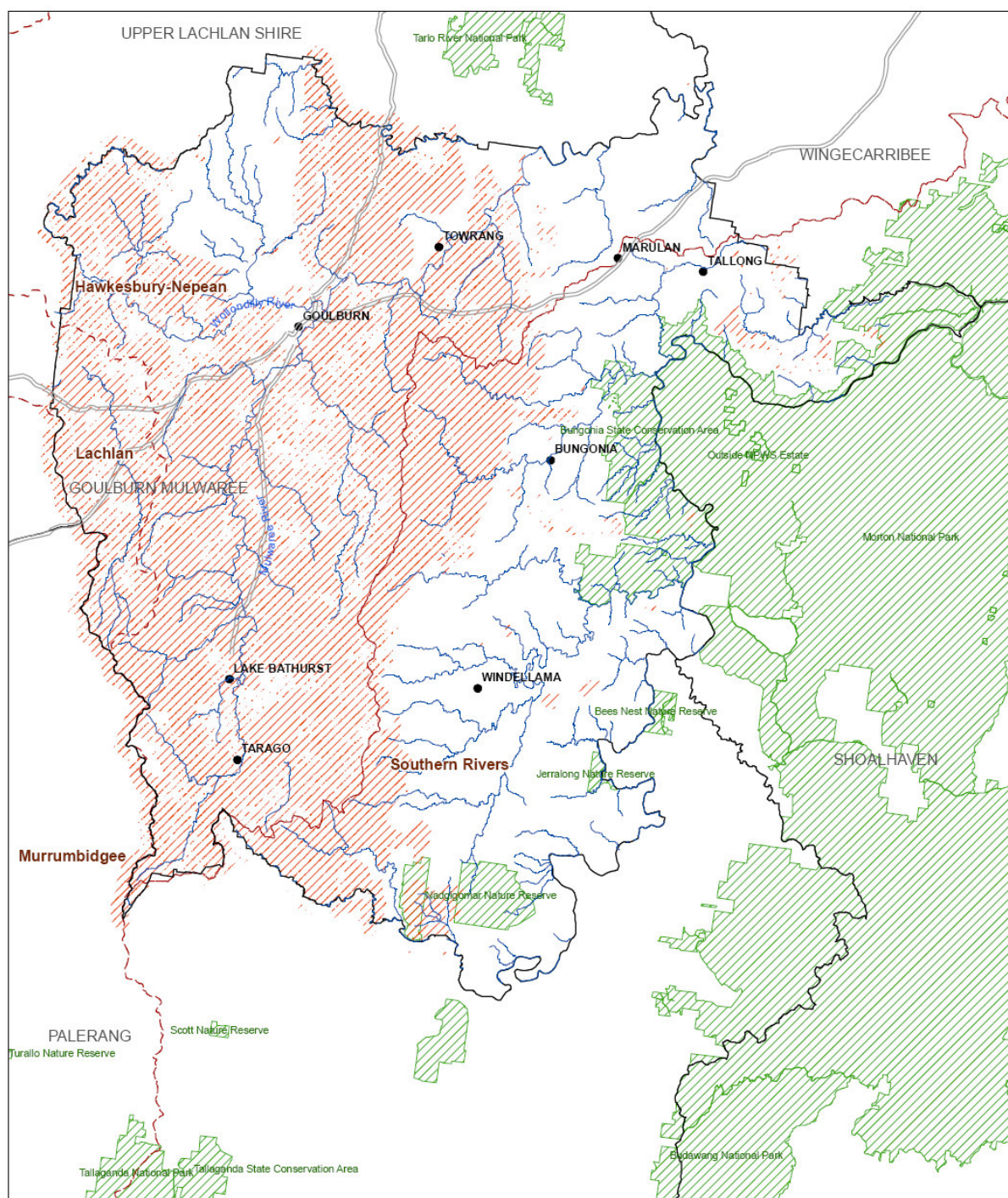
Project Name: Goulburn Mulwaree
Biodiversity Strategy

Client: Goulburn Mulwaree Council
Project No.: 145-001

Data on this map is copyright
 and supplied by:
 Council
 DEC
 DNR

© Eco Logical Australia Pty. Ltd.
 This map is not guaranteed to be free from error or omission. Eco Logical Australia Pty. Ltd.
 and its employees disclaim liability for any act done on the information in the map and any
 consequences of such acts or omissions.

- Veg type < 15% reserved
- Over-cleared vegetation type (>70% cleared)
- NPWS Reserves
- LGA boundaries
- CMA boundaries
- Main Roads
- Towns



Prepared by: JL
 Approved by: AM
 Status: Final Draft
 Projection: AMG Zone 55
 Date: 4/04/2007



1:300,000



Figure 9 FINAL DRAFT Vegetation within Over-cleared Mitchell Landscapes

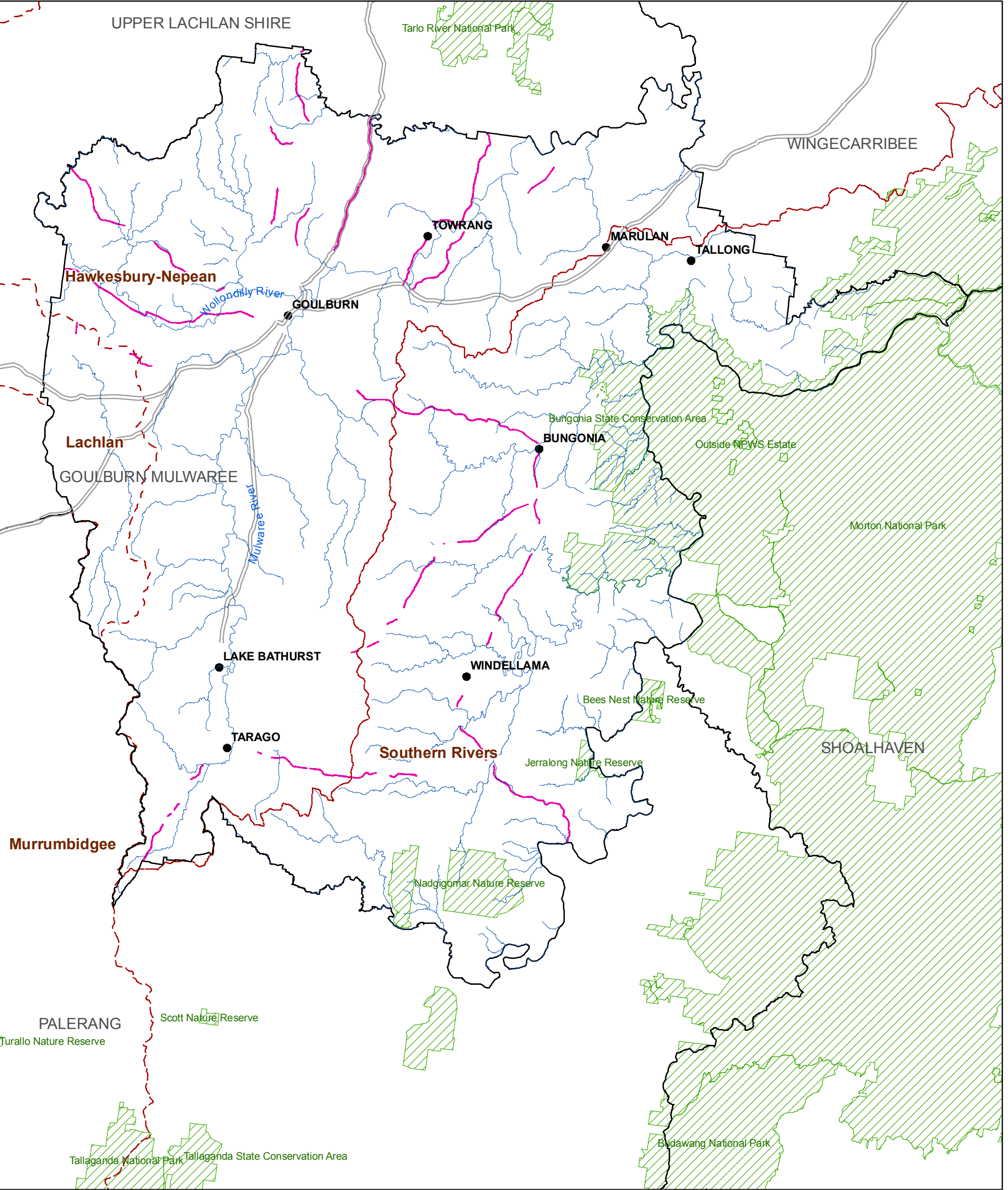
**Project Name: Goulburn Mulwaree
 Biodiversity Strategy**

**Client: Goulburn Mulwaree Council
 Project No.: 145-001**

Data on this map is copyright
 and supplied by:
 Council
 DEC
 DNR

© Eco Logical Australia Pty. Ltd.
 This map is not guaranteed to be free from error or omission. Eco Logical Australia Pty. Ltd.
 and its employees disclaim liability for any act done on the information in the map and any
 consequences of such acts or omissions.

- Over-cleared Mitchell Landscape
- NPWS Reserves
- Main Roads
- LGA boundaries
- CMA boundaries
- River/Streams



Prepared by: JL
Approved by: AM
Status: Final Draft
Projection: AMG Zone 55
Date: 13/04/2007



1:300,000









**Figure 10 FINAL DRAFT
Roadside corridors
(15m buffer
containing vegetation in moderate to good condition)**

**Project Name: Goulburn Mulwaree
Biodiversity Strategy**

**Client: Goulburn Mulwaree Council
Project No.: 145-001**

Data on this map is copyright
and supplied by:
Council
DEC
DNR

© Eco Logical Australia Pty. Ltd.
This map is not guaranteed to be free from error or omission. Eco Logical Australia Pty. Ltd.
and its employees disclaim liability for any act done on the information in the map and any consequences of such acts or omissions.

-  Roadside Vegetation (Mod./Good)
-  NPWS Reserves
-  Main Roads
-  LGA boundaries
-  CMA boundaries
-  River/Streams