



Annual Report 2023

PRIDE

Passion Respect Innovation Dedication Excellence

Table of Contents

Foreword	3	Contracts Awarded over \$150,000	89-90
Our Organisation	4	Public Interest Disclosure	91
Councillors	5	S125 Access to Information Statistical Report	91-92
Financial Information	6-7	Statistical Information About Access Applications	93-96
Capital Works	8	State of the Environment Report	97-109
Water Services Capital Projects	9		
Our Community	10-34		
Our Economy	35-40		
Our Environment	41-47		
Our Infrastructure	48-65		
Our Civic Leadership	66-68		
Financial Assistance Summary	69-70		
CBD Grants Awarded	71		
Heritage Grants	72		
Grants Received	73-76		
Environmental Planning Assessment Act 1979 / Development Contributions ...	77-79		
Legal Proceedings	80-81		
Mayoral Expenses and Senior Staff Remuneration	82		
Councillor Meeting Attendance/Induction & Professional Development	83		
Regulations, Rates and Charges Written Off, Additional Rate Variation	84-85		
Companion Animals Act 1998 and Regulation	86		
Equal Employment Opportunity Management Plan	87		
Modern Slavery Compliance	88		

Acknowledgement of Country

*“Goulburn Mulwaree Council acknowledges
and pays our respects to the Aboriginal elders
both past and present as well as emerging
leaders and acknowledge the traditional
custodians of the land on which we all live”.*

Foreword

Welcome to Goulburn Mulwaree Council's Annual Report for 2022-2023.

It is our pleasure to present the 2022-2023 Annual Report for the Goulburn Mulwaree Council.

Through this report, Council informs its ratepayers, residents, business community, and visitors about its prior year accomplishments.

Goulburn Mulwaree Council had a productive year, with major projects finalised such as the North Park Pavilion Upgrade, a new playground in Tony Onions Park in Marulan, and the brand-new Riverside Park Pump Track. These new additions have enhanced our community's recreational options and reflect our commitment to improving local amenities.

The unprecedented floods at the end of 2022 presented a significant challenge. This unexpected event required Council to allocate funds not initially forecasted, emphasising our commitment to maintaining safety and infrastructure during critical times. Despite these unforeseen circumstances, we remain dedicated to our strategic focus and community projects.

Over the past five years, Goulburn Mulwaree's population has increased from 29,600 to 32,053, as per the latest Census data. In 2026, our region's estimated resident population is 38,169, according to the Australian Bureau of Statistics.

Over 2023 Council has continued to see a significant amount of development applications across our region, whilst they have decreased slightly from last year Goulburn continues to be an attractive location for people to relocate to.

Over the course of the last 12 months, we have been delighted to witness a remarkable surge in the number of visitors gracing the library. Over 20,000 more individuals have embarked on enlightening journeys within the library's walls. The thirst for knowledge and the love for literature have truly flourished, creating an atmosphere of intellectual curiosity and exploration.

But that's not all! Since March 2022, the Goulburn Performing Arts Centre has become a vibrant hub of cultural festivities and captivating performances. The stage has come alive with over 220 awe-inspiring events, captivating the hearts and minds of more than 45,500 enthusiastic attendees. From mesmerizing theatrical productions to breathtaking musical performances, the GPAC has become a beacon of artistic expression, fostering a deep appreciation for the performing arts within our community.

These remarkable achievements stand as a testament to the unwavering dedication of our staff, the support of our community, and the boundless passion for knowledge and creativity that resides within each and every one of us. Together, we have created an environment where the joy of learning and the magic of the arts intertwine, enriching the lives of all who partake in these extraordinary experiences.

On behalf of Council, we would like to thank residents for their ongoing feedback and support. Our goal is to provide you with efficient services for the benefit of the community, and we are committed to continuously improving Goulburn Mulwaree. We appreciate your time in reading this report.



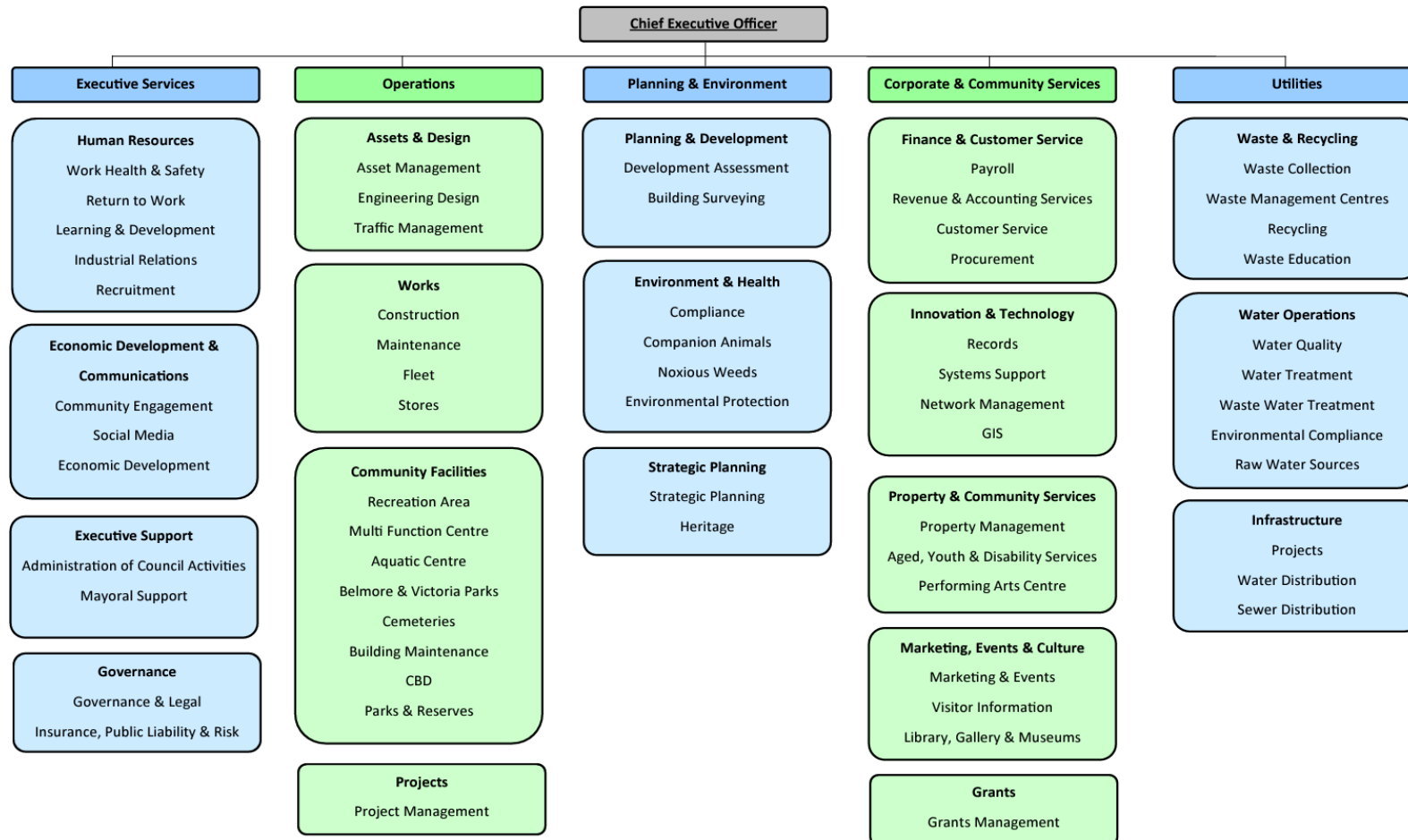
Chief Executive Officer
Aaron Johansson



Mayor
Cr Peter Walker

Our Organisation

Goulburn Mulwaree Council is one of the largest employers in the area with approximately 350 staff members working across a range of services. The current structure is outlined in the following diagram. The structure contains business units to undertake certain functions, projects and provide services in line with the key themes identified in the Community Strategic Plan.



Councillors 2022 – 2024



Cr Peter Walker

Cr Peter Walker was first elected to Goulburn Mulwaree Council in September 2016. He was elected Mayor in January 2022.

Contact Details:

Phone: 0418 215 184

Email: peter.walker@goulburn.nsw.gov.au



Cr Andy Wood

Cr Andy Wood was elected to Goulburn Mulwaree Council in December 2021.

Contact Details:

Phone: 0490 037 421

Email: andy.wood@goulburn.nsw.gov.au



Cr Carol James

Cr Carol James was first elected to Goulburn Mulwaree Council in September 2008 and has served continuously. Cr James served as Mayor from 2008 to 2010.

Contact Details:

Phone: 0409 483 766

Email: carol.james@goulburn.nsw.gov.au



Cr Daniel Strickland

Cr Dan Strickland was elected to Goulburn Mulwaree Council in December 2021.

Contact Details:

Phone 0490 036 241

Email: daniel.strickland@goulburn.nsw.gov.au



Cr Andrew Banfield

Cr Andrew Banfield was first elected to Goulburn Mulwaree Council in September 2008 and has served continuously.

Contact Details:

Phone: 0427 130 298

Email: andrew.banfield@goulburn.nsw.gov.au



Cr Jason Shepherd

Cr Jason Shepherd was elected to Goulburn Mulwaree Council in December 2021.

Contact Details:

Phone: 0490 036 157

Email: jason.shepherd@goulburn.nsw.gov.au



Cr Michael Prevedello

Cr Michael Prevedello was elected to Goulburn Mulwaree Council in December 2021.

Contact Details:

Phone: 0490 033 792

Email: michael.prevedello@goulburn.nsw.gov.au



Cr Bob Kirk

Cr Bob Kirk was elected to Goulburn Mulwaree Council in September 2008 and has served continuously. Cr Kirk served as Mayor from 2016 to 2021.

Contact Details:

Phone: 0419 854 599

Email: bob.kirk@goulburn.nsw.gov.au



Cr Steve Ruddell

Cr Steve Ruddell was elected to Goulburn Mulwaree Council in December 2021. Cr Ruddell was elected Deputy Mayor in 2022.

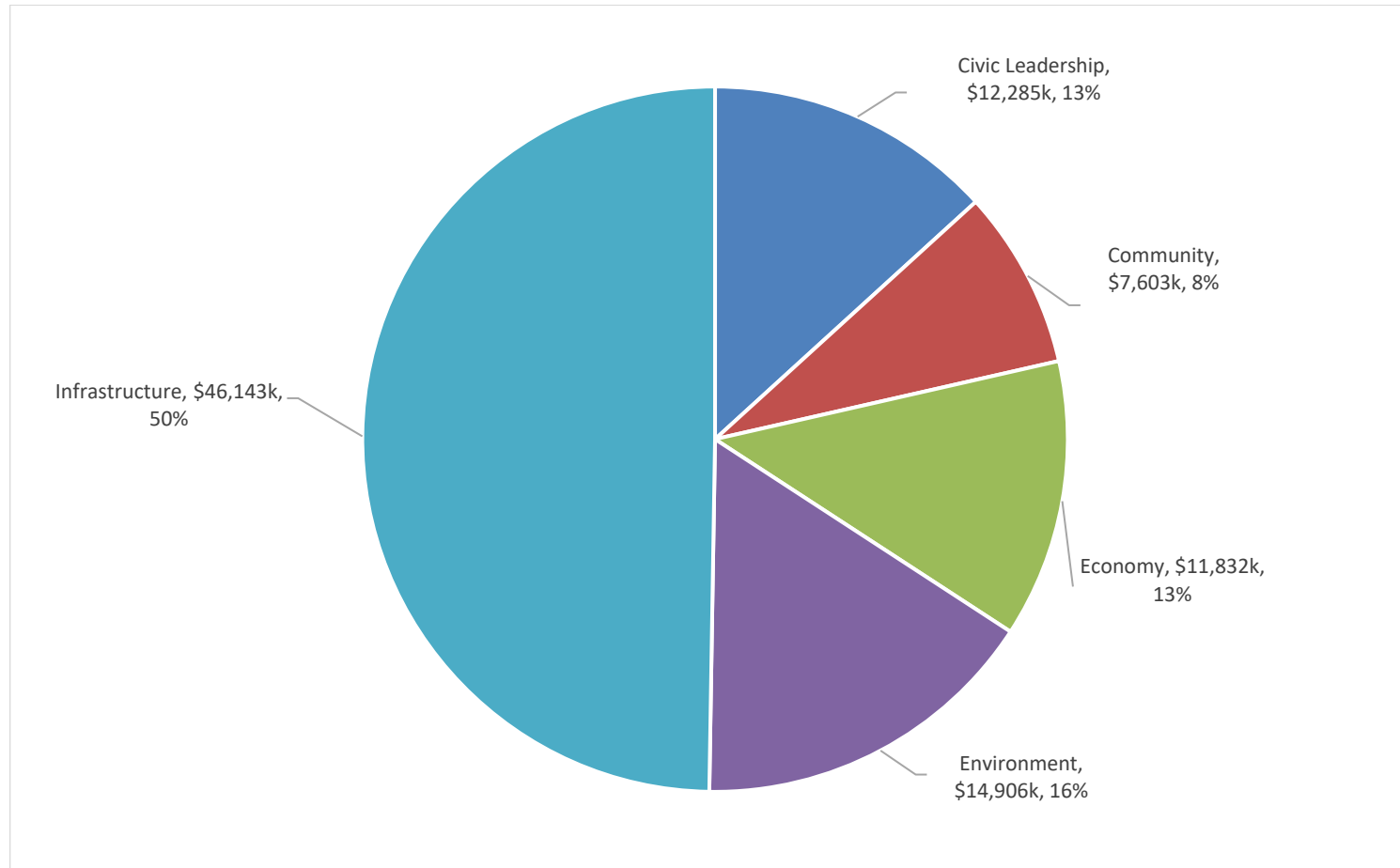
Contact Details:

Phone: 0490 033 756

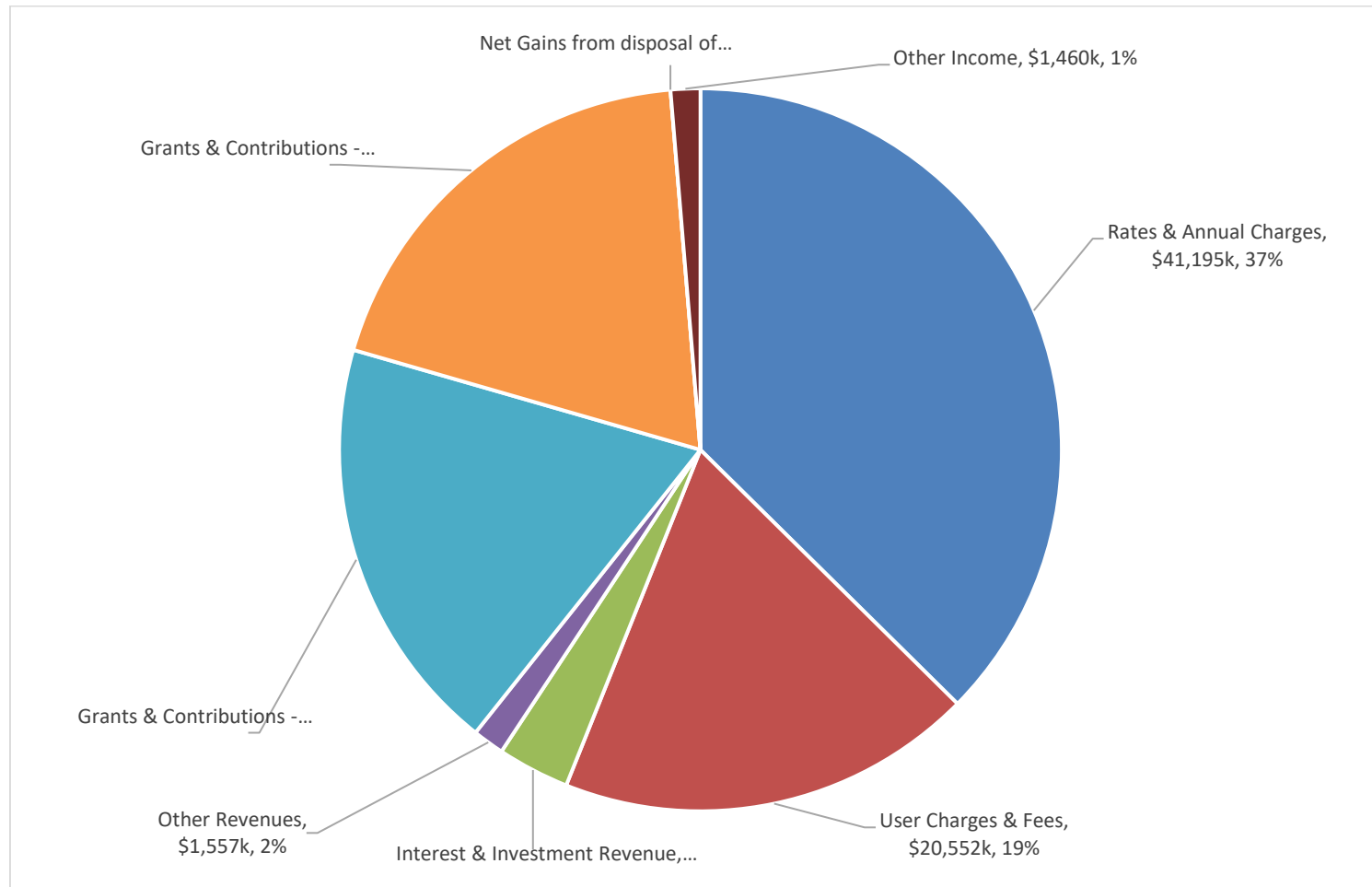
Email: steven.ruddell@goulburn.nsw.gov.au

Financial Statements *(For a full copy of the Financial Statements please refer to the Appendix)*

Operating Expenditure



Income



Capital Works

Budget: \$86,409,739.18

Result: \$40,664,962.63

Council's adopted capital program for 2022 – 2023 was \$86,409,739.18. Details are provided below:

Business Unit Description	Original Budget	Actual YTD	Variance Vs Original Budget
Innovation & Technology	\$591,000.00	\$425,539.58	\$165,460.42
Marketing & Culture	\$219,000.00	\$243,059.87	(-\$24,059.87)
Environment & Health	\$51,200.00	\$37,317.27	\$13,882.73
Projects	\$21,674,224.00	\$13,566,012.56	\$8,108,211.44
Operations	\$13,498,073.18	\$12,975,635.17	\$522,438.01
Community Facilities	\$752,750.00	\$620,856.89	\$131,893.11
Asset & Design	\$10,000.00	\$29,615.56	(-\$19,615.56)
Waste Management	\$6,031,999.00	\$3,351,643.68	\$2,680,355.32
Water Services	\$13,184,092.00	\$2,592,652.85	\$10,591,439.15
Waste Water Services	\$30,127,401.00	\$6,821,995.77	\$23,305,405.23
Property & Community Services	\$270,000.00	\$633.43	\$269,366.57
Total	\$86,409,739.18	\$40,664,962.63	\$45,744,776.55

Water Services Capital Projects

Water Main Renewals \$1,999,616.73

This year Killard Infrastructure continued their 4th year of 19/20 Capital Works – Water Infrastructure contract. Killard were allocated 5 water mains for the financial year which would account for the total allocated budget for the financial year, following a kick off meeting for the new financial year Killard commenced the work. In total Killard replaced water mains in Bradley Street, Betts Street, Combermere Street, Glenelg Street and Sydney Road, adding up to 2.0kms of water mains and 77 water services renewed.



Water Main Combermere Street 2022-23

Sewer Rehabilitation \$999,215.86

This year Insituform started their 1st year of Sewer Rehabilitation contract. At the start of the contract, they were supplied with a pack which outlined over 6km of lining and 10km of cleaning works for the first year of the contract. In 22/23 financial year Insituform completed 6.06kms of sewer relining work and 10.9km of sewer cleaning work.



Sewer Work 2022-23

A. Our Community

“To have a network of vibrant, inclusive and diverse communities that value our cooperative spirit, self-sufficiency and rural lifestyle”

Strategic Objectives:

“Our community’s health and wellbeing are supported”

Delivery Program Strategy	Activity	Measure	Status
A.1 Advocate and facilitate discussions with relevant authorities and funding bodies to improve access to services and facilities for youth, older adults and people with disabilities.	A.1.1 Work with PCYC to finalise their dedicated youth space/centre project.	Dedicated youth space/centre opened.	Delayed/Deferred PCYC seeking additional funding for the project
	A.1.2 Provision of Council’s Neighbour Aid, Centre based Respite and Leisure Link NDIS Program.	All CHSP requirements met, NDIS service provision status maintained.	Council’s NDIS Leisure Link program was suspended during 2022-23 due to staff vacancies. The program resumed in July 2023
	A.1.3 Ongoing implementation of 2021-2026 Goulburn Mulwaree Disability Inclusion Action Plan (DIAP) short term priorities.	Infrastructure and other projects delivered in accordance with the DIAP objectives.	Completed
	A.1.4 Determine scope and identify potential location of proposed Community Centre.	Scope defined and options identified.	Completed

A.2	Support youth programs that encourage empowerment, resilience, and capacity building.	A.2.1	Deliver a range of youth programs (Fit for Life, Be Seen Be Heard, School Holiday programs, Youth Week etc.) operating year-round to address social, health and educational needs of youth.	Youth Services programs, activities and events delivered with increased participation.	Completed
		A.2.2	Ongoing delivery of mentoring programs to young people and continued partnerships with other service providers e.g., Terry Campese Foundation.	Number of participants in programs.	Completed
		A.2.3	Continued operation of Paperback Café in Library.	Participants attain TAFE Accreditation.	Completed
		A.2.4	Waste Education and Sustainability programs run through Council's new Re-Use Goulburn Sustainability Precinct at Goulburn Waste Management Centre (and 50 seat education centre), including initiatives for youth and schools.	Completion of new Centre and program delivery.	Delayed/Deferred Requires completion of Re-Use Goulburn facilities. School waste education program is ongoing.
A.3	Promote physical and mental health and partner to ensure our community has access to appropriate information and support services to improve health outcomes.	A.3.1	Provide innovative Library, Museum and Gallery programs, services, exhibitions, and workshops that address community needs for education, creative expression and recreation for children, youth, adults, and seniors.	Variety of regular social and cultural programs, special events, and workshops delivered.	Completed

“There is active and creative participation in community life”

Delivery Program Strategy			Activity	Measure	Status
A.4	Events celebrate the identity of our towns, our heritage and our culture.	A.4.1	Event Strategy implementation.	Short term strategy actions implemented.	Completed
				Events supported through Event Development Fund and Financial Assistance Grants programs.	Completed
		A.4.2	Develop and deliver cultural and community events across all cultural services.	Cultural and community events delivered with the combined efforts of various departments.	Completed
		A.4.3	Sports tourism events secured and key cultural events attracted to grow year-round visitor economy.	Economic impact of sports tourism events and cultural events measured and reported.	Completed
A.5	Develop compelling public spaces and experiences for the community across the region.	A.5.1	Ensure Library collections and spaces are maintained and updated to remain relevant and meet community needs.	Physical and electronic collections updated.	Completed
				Library spaces and facilities maintained.	Completed
		A.5.2	Promote and present contemporary art and art education through exhibitions, programs and services of the Goulburn Regional Art Gallery.	Exhibitions, education offerings and public programs delivered.	Completed

		A.5.3	Develop and implement exhibitions, public programs, and complementary activities to increase visitation and engagement with Rocky Hill War Memorial Museum and the Goulburn Historic Waterworks.	Exhibitions and programs implemented.	Completed
				Visitation measured and reported to Council.	Completed
		A.5.4	Seek funds for the ongoing maintenance, conservation and repair of Museum buildings at St Clair, Rocky Hill War Memorial and Museum, and Goulburn Historic Waterworks.	Funding secured for maintenance, conservation and repair works.	Completed
		A.5.5	Develop and implement a program of diverse season shows, while attracting commercial and community based shows to increase patronage at Goulburn Performing Arts Centre.	Number of shows by genre.	Completed
				Ticket sales measured and reported to Council.	Completed
A.6	Build partnerships with key arts and cultural bodies and support community participation in arts and culture	A.6.1	Create strong and collaborative relationships with key arts and cultural bodies.	Agreements in place and supported ongoing.	Completed
		A.6.2	Promote cultural appreciation of the Arts across Council messaging.	Regular advocacy and promotion undertaken.	Completed

A.6.3	Seek opportunities for digitisation of cultural collections across the Local Government Area.	Advocacy undertaken and grant funding secured.	Delayed/Deferred Grant applications unsuccessful to date. Library is undertaking digitisation of historical collections with annual funding from the State Library. Rocky Hill commencing in-house digitisation of collection. Waterworks Archive Collection digitised with public access imminent.
A.6.4	Waste to Art initiatives included as part of Re-Use Goulburn Sustainability Precinct and Waste Education programs.	Waste to Art and similar initiatives delivered.	Delayed/Deferred Requires completion of Re-Use Goulburn facilities.

“Our community is inclusive, connected, safe and proud”

Delivery Program Strategy	Activity	Measure	Status
A.7 We acknowledge and embed local Aboriginal culture and stories within our community.	A.7.1 Reactivate Reconciliation Action Plan Working Party.	Working Party re-established.	Completed
	A.7.2 Improved consultation with the Aboriginal community to better understand opportunities to embed Aboriginal culture and stories.	Development of Reconciliation Action Plan commenced.	Delayed Expected to be commenced in first half of 2023-24 Financial Year
	A.7.3 All official Council events to commence with a Welcome/Acknowledgement of Country.	Welcome/Acknowledgement of Country at each Council-run event.	Completed
		Inclusion of Welcome/Acknowledgement of Country protocols in the Event Toolkit.	Completed
A.8 Design public spaces and residential developments to support social connection and public safety.	A.8.1 Review Council’s Development Control Plan.	Development Control Plan reviewed and updated.	Delayed/Deferred Comprehensive review underway, but due to resourcing, planning proposals associated with the Housing Strategy have delayed progress. Some chapters have been updated already within the existing document. e.g., Water and sewer servicing requirements; Vegetation and Biodiversity; Heritage; and Flood Affected land.

A.8	Design public spaces and residential developments to support social connection and public safety.	A.8.1	Review Council's Development Control Plan.	Opportunities for engagement are taken up where possible.	Completed
				Promotion of the need to incorporate social connection and public safety in design undertaken.	As per comments on comprehensive review (above).
		A.8.2	Encourage community participation in planning.	Community Participation Plan reviewed as required.	Not yet required.
		A.8.3	Maintain public art.	Funds allocated and work undertaken to maintain and repair public art to ensure public spaces remain attractive social spaces.	Completed
A.9	Support local initiatives that welcome new residents.	A.9.1	Continue to implement Goulburn Australia marketing activities targeting new residents, new industry, and investment.	Campaign implementation activities delivered.	Completed
				Data collected and reported to Council.	Completed

A.10	Encourage community pride through the beautification and maintenance of our villages and towns.	A.10.1	Grants sought where opportunities arise for civic beautification.	Successful grant applications and delivery of projects.	Completed
		A.10.2	Review of villages and towns maintenance programs to ensure appropriate budget and staffing for maintenance.	Review completed.	Completed - Specialist gardening crews allocated time to undertaken maintenance of landscaped areas. Mowing frequency of sporting grounds increased to align with newly irrigation systems. Maintenance services for open space and building assets in line with current and past standards, with the exception of increased services to landscaped areas due to increased landscaped areas and feedback and sporting fields to align with newly installed irrigation systems.
				Community feedback received.	Completed as above
		A.10.3	Development of Village Plans to identify priority projects for grant opportunities.	Completion of additional plans.	Not yet commenced

“Our communities have access to affordable and safe accommodation and housing”

Delivery Program Strategy		Activity		Measure	Status
A.11	Advocate for funding to increase access to safe and suitable shelter and services that support people at risk or in need.	A.11.1	Advocacy opportunities taken up when identified with relevant Government Agencies or non-government organisations (NGOs) sought.	Advocacy activities reported to Council.	Partially completed. Advocacy Advisory Group has now been established and has held their first meeting. Regular Meetings are held with Parliamentarians and Government Officials on a range of advocacy matters.

Road Safety

Goulburn Mulwaree Councils Road Safety and Traffic Officer (RSTO) is well placed to plan, implement and deliver road safety projects relevant to their communities. Councils RSTO interact regularly with local residents, schools, government agencies, businesses and other stakeholders.

Council's Road Safety and Traffic Officer has created a four year Road Safety Action Plan (2021-2025) which has been adopted by Council addressing local issues using the data from local crashes.

Council's RSTO has prepared and will, plan, implement and evaluate the four year Road Safety Action Plan (2021-2025) and road safety projects which has been adopted by Council. These include programs like:

Young Drivers

- U-turn the wheel
- Log Book Runs 4 run per year
- Diving around heavy vehicles
- Drink Walking

Speed

- Motorcycle Awareness week – Look out for Joe rider
- Speed advisory trailer (placed on rural roads in the Goulburn LGA)
- Working with local Police to promote State wide programs and find problem areas
- Speed activated signs – speed program
- Country road campaign – Drive to the conditions
- Working with TfNSW in speed reductions on local roads

Cyclists

- Community Bike Ride
- Educational programs at schools

- Helmet safety
- Share the track – Wollondilly walking track cycle education

Fatigue

- Working with truck companies
- Coffee with a cop- sharing the Hume
- Truck safe on the Hume
- War on Fatigue free coffee cup promotion
- Learner drivers' education
- Snow traffic education – coffee with a cop

Drink Driving Prevention

- Drink driving education
- Promotion of Plan B materials to licensed premises in the LGA
- Win a Swag competition- Plan B promotion
- Liquor accord
- Beer Googles promotion –U Turn the Wheel

Heavy Vehicles

- Work with local heavy vehicle businesses on road safety issues and education of drivers
- Attend forums on heavy vehicles versus vulnerable road users
- Truckies on the Hume
- Learner drivers driving around heavy vehicles
- Issuing Heavy Vehicle Permits

Children

- Child restraints and checking program
- School talks
- Driveway, Pedestrian & Bike Safety
- Hold My Hand signage – Little Blue Dinosaur

Older drivers

- Over 65 Presentations
- Presentation to local community groups
- Seniors Week
- Greys skills enhancement

Pedestrians

- Over 65s Presentation
- Look out before you step out
- Physiotherapy unit talks
- 40k pedestrian friendly zone CBD area
- Hold My Hand
- Police Driver Training – Working together

Motorcyclist

- Look out for Joe Rider
- Return riders' course
- MOTOCAP – education of safe riding gear

Schools

- School crossing upgrades (ongoing)
- Driver Education on Flagged School Crossings
- Child education on Flagged School Crossing
- Kindergarten packs
- Bus Safety both urban and rural
- Seatbelts on busses
- Parking around schools – working with the Rangers and placement of educational banners
- Look out Before you Step Out Program
- 50k patches and flashing lights around schools
- School crossing flat letter agreement

- Funding application for crossing for upgrade of school crossings to wombat crossings

Road Safety Inspection and Audits

- Road Safety Audits when requested by RMS
- Safe Systems Assessments
- Sign inspections on rural roads
- Traffic Committee
- Rural Bus Stop inspections
- Road works completion inspection

Others

- Black spot funding
- Active Transport funding
- TfNSW LGRSP funding and evaluation for projects
- Bus Shelter funding
- Pedestrian safety funding
- When work and road safety meet
- Walk to work day and driving distractions (mobile phones)
- Presentations at Police Driver training, LGRSP seminars and TfNSW
- Presentation to the NSW Road user Safety Managers on projects
- Attend Liquor Accord
- Member of the ACT Chapter of Road Safety, attend and present at forums
- Road Rule Awareness Week
- Bus Safety Week
- RSO Quarterly Meetings
- Hospital redevelopment parking permit implantation
- Animal crashes on country roads
- Parking Banners around schools
- Rural Road Safety Week
- National Road Safety Week
- Animals on Country Road Forum

- Australia Day road Safety Stall
- Snow Safe Launch
- Clear windscreen = Safe Drivers Ice Scraper
- National Road Safety Week
- Caravan Safety
- ANCAP promotions



Learner Driver Logbook Run



National Road Safety Week

Goulburn Mulwaree Library

Goulburn Mulwaree Library – Annual Report 2022-2023

2022/23 was the Library's first full year since 2019 without any COVID lockdowns, closures, or restrictions, and it was fantastic to finally see a full resumption of all services and programs in the Library.

2022/23 saw the Library embark on initial research and consultation for a new strategic plan, finalise a lighting upgrade, update Library shelving, and commence initial work for IT upgrades. At the end of 2022 the Library's mobile library service ceased, replaced by a newly updated home library service, increased numbers of volunteers, and increased outreach activities. The Library also welcomed a visit and review of services and facilities by the State Library of NSW.

On site usage of the Library increased dramatically, with over 20,000 more visits to the Library, 40,000 more loans and renewals, and 200 more new members than the previous year. Usage of electronic collection items, website and social media engagement, and program attendance remained consistent with previous years, reflecting an overall growth in online engagement as a result of ongoing improvements to our website and catalogue, digitisation of library collection materials, and increases in electronic collection materials.

Bookings for early childhood, after school, young adult, and adult programs and events returned to nearly full capacity across the board in 2022/23, and several new community programs and special events were well attended.

Services for Adults and Community Groups

With aims to provide varied, meaningful, and entertaining programs and events for adults, 2022/23 was no different for Goulburn Mulwaree Library, providing core Library services and hosting a large number of successful events and programs for adults.



- Author talks, showcasing high profile Australian authors, and local and debut authors, including Michael Robotham, Catherine Bishop, Richard White, Naomi Brown, Debra Oswald, Alicia

Thompson, Phillipa McGuiness, Tori Haschka, Andrew Moss, Alison Brahe Daddo, Meredith Jaffe, Tania Blanchard, Elle Thorpe, Jacqueline Pearson, Kim E Anderson, Lucy Bloom, and Brad Guy.

- Large community events including Goulburn Comic Con, Goulburn Hobbies Expo, A Night of Crime, Family History Month, Murder Mystery Party, Herbal Medicine workshop, Beers and Braids, Clothes Swap, Law Week, Bee Keeping, Drag Trivia and Bingo, and Christmas craft.
- A range of community programs including a new Justice of the Peace community desk, digital mentoring sessions, Scrabble Club, Mah Jong, Goulburn Mulwaree Model Club, Fellowship of Australian Writers, genre book club, Mindful Mondays, lunchtime languages, and our annual Summer Reading Challenge.
- Programs run in association with local community groups and organisations, including Right To Work, Country Women's Association, The Men's Shed, Lieder Theatre Company, Headspace, History Goulburn, Health NSW, and Service NSW.



Services for Young People

Increased outreach activities in the first half of 2023 saw fantastic engagement with local schools and organisations and helped to distinguish Goulburn Mulwaree Library as a valuable community resource for all ages. Throughout the year the Library hosted a vast array of programs, workshops, and activities for young people, including:

- Participation in community events including Frostival, Australia Day, Pictures n Popcorn, hosting school visits including a special schools visit from author RA Spratt.
- The launch of the Library's new Q Space for LGBTQIA+ teens and allies, providing a safe and welcoming space for all community members to make new friends, engage with special guests, undertake fun projects, and explore their cultures.
- Fully booked regular programs for early childhood including Rhyme Time, Story Time, Giggle & Wiggle, special story times celebrating Diwali, Chinese New Year, Reconciliation Week, and our new Tell Me a Story intergenerational program bringing seniors and toddlers together in the Library to share conversation, memories, stories, and fun.
- After School programs for primary school students including STEM based Hogwarts Classroom, Junior Lego and Lego Robotics, literacy based Peer Reading, Boardgames, and Crafternoons, and special events for National Science Week, National Simultaneous Story Time, and Reconciliation Week.
- Special events and school holiday activities including Dr Seuss story party, World Chocolate Day, comics making workshops, spring chicken story party and hatching chickens, special guests

Little Wing Puppets, Dr. Graham Science Show Offs, Fizzics Education, our annual Summer Reading Club, and a range of children's authors and illustrators.



Comic Con 2023

Goulburn Mulwaree Library hosted Goulburn Comic Con in 2023, the first Comic Con event in 4 years after COVID cancellations. The highly successful community event, held at the Recreation Area, included over 80 stallholders, a gaming hall, the Australian eSports League, Series of Events entertainment, Rock n Roll Wrestling, Aussie Night Markets, and a cosplay competition. Comic Con 2023 also included a small art exhibition from artists at Right To Work and Goulburn Regional Art Gallery. An estimated 3000-4000 people attended, making Comic Con one of Goulburn's most popular community events.



Local Studies

The Library's work to preserve our rich history and make it accessible to researchers continued in 2022/23 with a number of additions to collections, digitisation projects, and programs and events.

- Digitisation of 100 years of historic Council meeting minutes and committee reports
- A revamp and upgrade of the local studies web pages on the Library website, including the addition of new online exhibitions on St John's Orphanage, Music in Goulburn, Villages and Localities, and the Goulburn Cookery Book.
- Oral history interviews with Goulburn's Queer community members, and the addition of historic oral history interviews to the Library catalogue.
- Celebrating National Family History Month with a variety of programs and workshops.
- New archival collections from Lake Bathurst, and the commencement of a new thesaurus of terminology to aid with consistent cataloguing and access of materials.

Mighty Playwrights

Mighty Playwrights 2022 wrapped up with fantastic performances at Goulburn Performing Arts Centre, with over 650 audience members from local schools and the broader community. The program also expanded to include original music and soundscapes composed by students from Hume Conservatorium and original illustrations created by students from Goulburn Regional Art Gallery's Afternoon Art Club.

In 2022 and 2023, the Mighty Playwrights program has worked with students from 13 primary schools, 9 mentors, 12 young musicians from Hume Conservatorium and 9 Hume Conservatorium mentors, 36 young artists from Goulburn Regional Art Gallery, and over 50 members of Goulburn's performing arts community, making this program a true community triumph.



Looking Forward

Goulburn Mulwaree Library will continue to improve its resources and services and increase connections with the community with several new initiatives planned for the coming year:

- BookFest 2024, Goulburn's reader writer festival, incorporating a local writer's showcase.

- Continued local studies digitisation, resumption of the oral history program, and installation of a local studies display cabinet in the Library.
- Increased liaison with schools and community organisations via outreach activities, and continued growth of diverse and inclusive programming and events.
- Mighty Playwrights 2023 and 2024.
- Implementation of Wi-Fi printing services, enabling printing from any device at any location, and a major upgrade of the Spydus Library Management System.
- Presentations at the Royal Australian Historical Society and SWITCH Library conferences.

As always, Goulburn Mulwaree Library is proud to provide high quality library services and facilities, entertaining programs and workshops, and literacy and education programs for the whole community.

Goulburn Regional Art Gallery

Goulburn Regional Art Gallery delivered an ambitious program in 2022/23 and met 21,639 visitors at the Gallery, 3,763 participants via the Outreach programs, Digital Broadcast reached 8,312 and Gallery exhibitions on tour reached 7,896. The Gallery had a total physical and digital reach of 41,610.

The 2022/23 program explored a range of contemporary concerns and championed artists local to the region. Environmental sustainability and climate change, connection to place, natural phenomena, and politics of materiality were recurring themes addressed across numerous exhibitions. The Gallery continued to present work from local and regional artists, particularly within its Gallery 2 program, and provided a space for the Permanent Collection to be on view through visiting local artists and arts professionals who curated 'The Window'. The Gallery presented artistic practices that emphasized a range of disciplines, including painting, installation, sculpture, textiles, and photography.

Barbara Cleveland Thinking Business, a Goulburn Regional Art Gallery exhibition toured by Museums & Galleries of NSW commenced touring throughout Australia in September 2021. In 22/23 the exhibition toured to the following venues and will finish touring at Goldfields Art Centre in Western Australia on 1 September 2023.

Venue	Dates
Gosford Regional Gallery, NSW	11 June – 7 August 2022
Bank Art Museum Moree, NSW	18 February – 30 April 2023
Somerset Regional Art Gallery – The Condensery, Queensland	18 February – 30 April 2023

Barbara Cleveland: 'Thinking Business' will continue to tour until September 2023 with the option of further venues after this date.

The Gallery continues to receive funding by Create NSW under the multi-year funding program for 2021-2024, which contributes to the great support of Goulburn Mulwaree Council.

Artist Support

The Gallery supported a total of fifty artists including thirty three from NSW, twenty nine local artists in nineteen exhibitions, as well as workshop tutors and guest speakers.

Outreach

The Gallery has been actively involved in activities for young people and seniors who cannot access the Gallery. Council's Outreach Officer, in conjunction with Goulburn Public School's SACC Program have provided weekly Art and Literacy based Playgroups during school terms across the region at Dalton, Goulburn East, Taralga, Tallong, Marulan and 2 at Goulburn Public. In the 2022/23 financial year 1,593 children accessed the SACC Outreach Program.

Outreach programs see the Gallery take its programs on the road, giving opportunity to engage with new audiences. During 22/23 the Gallery presented outreach activities at the Goulburn Community Centre, Australia Day and Comic Con reaching a total of 2,170 participants.



Image credit: Installation view *All light, all air, all space*, 2022, Goulburn Regional Art Gallery featuring Cameron Robbins *Solar Drawing instrumental*, 2021, Bonita Ely, *Untitled*, 2007, *Untitled*, 2011, *Manning Clark's Brain (the Manning Clark family has a holiday house on the headland)*, 2007 each from the series *Bithry Inlet* 2007 – 2011; Bonita Ely, *Life in a day*, 2006 and Bonita Ely, *The river's edge*, 1979, Rebecca Mayo, *Bagged wetland* 2022, and Megan Cope, *Quandamooka people, Untitled (Extractions I)*, 2020. Photo by Silversalt Photography.



Image credit: Installation view of Julian Meagher, *The Green Ray*, at Goulburn Regional Art Gallery featuring Julian Meagher, *The Green Ray – 1*, 2022 and Julian Meagher, *The Green Ray – 6*, 2022. Photo by Silversalt Photography.

Exhibitions

The Gallery commissioned new work from nine artists in a program of nineteen exhibitions during 2022/23. It supported fifty artists, including thirty three from NSW twenty six local artists. Highlights included:

- ***All light, all air, all space*** 1 Jul. –8 Oct 2022 (6,423 visitors). *All light, all air, all space* brought together works by Megan Cope, Bonita Ely, Rosalie Gascoigne, D Harding, Rebecca Mayo, and Cameron Robbins. The exhibition features works which utilise natural, found and recycled materials, some which invite participation or will undergo active metamorphosis throughout the course of the exhibition. In distinct and nuanced ways, the works in *All light, all air, all space* investigate our fragile and fraught dependence on the natural world and raise awareness of the current state of climate emergency.
- ***Bright*** 22 Oct. 2022 – 21 Jan 2023 (3956 visitors) *Bright* brought together seven Australian artists who each explore colour and Abstraction in their practice. Taking inspiration from diverse sources including architecture, dance, design, nature and music, these artists' works are bold and teeming with energy. The exhibition spans a range of forms, scale and materials, celebrating artists who challenge assumptions and expand possibilities.
- ***Julian Meagher The Green Ray*** 3 Feb. – 18 Mar. 2023. (2545 visitors) *The Green Ray* was solo exhibition from contemporary Australian painter Julian Meagher. It was a return to Meagher's earliest subject matter of land and sky. Drawing on memories of treasured family holidays to Crookwell, NSW, Meagher's exhibition is imbued with personal histories and nostalgia, reflecting on the passage of time and the natural

environment. Meagher's exhibition features a new body of work including large scale paintings and a light installation which creates an immersive and changing viewing experience.

- **Soft Power** 31 Mar. – 10 Jun. 2023 (4167 visitors) Through the practices of Karla Dickens, Julia Gutman, Nadia Hernández, Mehwish Iqbal, Kate Just and Raquel Ormella, *Soft Power* explored the diverse ways Australian artists use textiles to investigate social, cultural and political issues of our time. The exhibition presents the works of six Australian artists who each embrace textiles in order to send a message. These works explore a range of themes including environmentalism, feminism and power.



Image credits: Installation view *Soft Power*, 2023 at Goulburn Regional Art Gallery featuring Kate Just, *Anonymous was a woman*, 2019-2021 and Julia Gutman *Once more with feeling*, 2022.

Sector Engagement

The Gallery staff contributed to/attended/hosted the following sector events:

- Gallery Director was selected as a committee member for the Regional Public Galleries New South Wales committee.
- Gallery Director was a feature judge for the 2023 Harden Landscape Painting Prize alongside Susan Brindle, President, Southern Tablelands Arts.
- Gallery Director and Programs and Exhibitions Coordinator both attended the Regional Public Galleries New South Wales conference held at South East Centre for Contemporary Art (SECCA) in Bega in March 2023.
- Gallery Director attended the sector launch of Art Gallery of New South Wales' new building, Sydney Modern.
- Gallery Director and Programs and Exhibitions Coordinator attended the 2022 IMAGinE awards held at the Chau Chak Wing Museum in November 2022 where the Gallery was nominated for an award.
- Education Officer judged the Art Section in the Goulburn Show, 3 March 2023.
- Education Officer attended a training session held at Ngununggula, Southern Highlands Regional Gallery led by Adriane Boag from the National Gallery of Australia focussed on delivering art and dementia programs.
- Gallery hosted Southern Tablelands Art's 'mobile office' at the Gallery one Friday each month and supported several Southern Tablelands Arts professional development events targeted at local artists at the Gallery.

Awards

Goulburn Regional Art Gallery is nominated for three awards in the 2023 IMAGinE Awards:

- The group exhibition 'All Light, all air, all space' curated by Goulburn Regional Art Gallery Director featuring works by D Harding, Rosalie Gascoigne, Megan Cope, Cameron Robbins,

Bonita Ely and Rebecca Mayo. This exhibition is nominated in the category 'Exhibition Projects' for Small Galleries.

- 'The Window', an ongoing engagement and exhibition project where the Gallery invites artists, writers, curators and arts supporters from the community and beyond are invited to select works from the Gallery's Permanent Collection to display. This project is nominated for in the category 'Engagement Program' for Medium Organisations.
- Jenny Bell 'Life Forms' exhibition curated by Anne Sanders, the accompanying original publication and innovative public programs nominated in the category 'Innovation and Resilience Award' for projects with a budget of between \$10,001 and \$100,000.

The awards personation night for the IMAGinE Awards will take place at Sydney Modern, Art Gallery of New South Wales on Wednesday 28 November 2023.

Grants and funding

The Gallery continues to receive funding by Create NSW under the multi-year funding program for 2021-2024, which contributes to the great support of Goulburn Mulwaree Council.

The Gallery was successful in receiving grant funding of \$119,356 from the NSW Government's Creative Capital Program (Minor works and Equipment). This grant funding will transform an under-utilised space within the Gallery's footprint to expand our opportunities to exhibit art from the region and beyond.

The Gallery continues to co-fund the position of 'Outreach Officer' with Goulburn Public School as part of the Department of Communities and Justice's Schools as Community Centre's (SaCC) program.

Acquisitions

The Gallery grew its permanent collection by twenty works in the 2022/23 FY.

It acquired twelve artworks for the permanent collection via purchasing and donations:

- Emma Beer, *the luxury of not having it written in stone*
- Yvette Coppersmith, *Abstraction 1*
- Gift of the estate of Jon Lewis, Jon Lewis, *Adagio Dances, Bondi*, Retired beach inspector, Bondi, Dave Byers, artist, near Mt Isa and Japanese motorcyclist
- Anonymous donation Justine Varga, *Toothpaste* and *Desklamp*; Tom Polo, *Radical Reasons*; Alison Puruntatameri, *Jilamara Design*; Kenan Namunjdja, *Kunkurra (The Spiralling Wind)* and Teelah George, *A Hard Capture*

The Gallery also received eight artworks by the following artists under the Australian Government's Cultural Gifts Program:

- Janet Laurence, *What happens in glass 1, What happens in glass 2* and *Lace Gardening* (submitted 21/22 financial year, officially approved in 22/23 financial year)
- Rodney Pople, *Golden Age* (submitted 22/23 financial year, waiting for approval in 23/34)

- Ildiko Kovacs, *Hooked Up and In a line* (submitted 22/23 financial year, waiting for approval in 23/34)
- Arlo Mountford, *for the people of Reichstag*, (submitted 22/23 financial year, waiting for approval in 23/34)
- Maria Fernanda Cardoso, *Male and Female spiders Maratus splendens -Unrecognized artists* (submitted 22/23 financial year, waiting for approval in 23/34)

Public Art

In the 2022/23 FY there was no allotted budget to undertake Public Art works.

Through Goulburn Mulwaree Council's successful Street Smart Spaces Grant, the Gallery commissioned local artist, Heath Nock to create his artwork *Bush Fires*, enamel paint, 2022 for the Essential Energy Box in Russell Lane.

Education Program

Young People

The Gallery worked with 2,637 young people in 2022/23 through its Education Program, (1,120 with school visits and 1,517 in workshops).

Art Teenies is a free Gallery based program for children under 5 and their parent or carer. Delivered every Tuesday during exhibitions by Education Officers, Art Teenies introduces young audiences to talking about and making art. Participants are led on a tour of current exhibitions, treated to storytime with singing and nursery rhythms before undertaking a practical artmaking activity.

Afternoon Art Club is a practical program delivered every school term for nine weeks. Wednesday and Thursday afternoons cater for participants of a primary school age and Fridays for High school. Projects in Afternoon Art

Club mostly respond to current exhibitions. They are devised to expand children's skills in expressing ideas through making, to encourage enjoyment in the process of creating and to develop and refine art making skills. Afternoon Art Club is designed and delivered by Education Officers. Children created Japanese Manga style artworks which were displayed at Goulburn Comic Con in March 2023. Goulburn Art Award winner, Emma Beer, facilitated a Canvas Stretching workshop with Friday Afternoon Art Club participants.



Image credit: Friday Afternoon Art Club with their ceramic creations, May 2023, Goulburn Regional Art Gallery.

An average of three workshops are offered by the Gallery each school holidays. These workshops generally include two delivered by Education Officers and one by a guest artist facilitator. For instance, the Gallery hosted painting with Aryssa McAlister, Felting Connections with Girl Tribe Goulburn. In collaboration with Youth Services, our Education Officer, delivered a Manga painting workshop.

Tours and creative activities were provided for Pre-School, Primary and High School students during exhibitions. Visiting schools groups participate in a culturally mediated discussion through exhibitions before completing a Gallery based sketching activity. Goulburn Hand Weavers and Spinners demonstrated their textile skills to visiting school groups in the Gallery during *Soft Power*. Local and Regional Art Teachers attended the Gallery for the Art Lovers Afternoon Tea on 14 February 2023. The Gallery engaged 1120 local school students in fifty four groups from nine local schools and pre-schools.



Image credit: Goulburn Hand Weavers and Spinners demonstrating to visiting Goulburn West Public School students, 5 May 2023, Goulburn Regional Art Gallery.

Five Education Kits were written by Education Officers for exhibitions in 2022/23; *All light, all air, all space*; *Bright*; Julian Meagher *The Green Ray*; *Soft Power* and Jenny Bell *Life Forms*. These were available in hardcopy from the Gallery and are hosted in digital format on the Gallery's website.

Adults

The Gallery offered 44 workshop sessions for 363 adult participants in 2022/23. Evening workshops for adults were hosted, with three weeks of Life Drawing run by award winning artist Anthea da Silva, five sessions of Ceramics with local artist Helen Eatough, a painting workshop with exhibiting artist Julian Meagher, Introduction to Printmaking over three weeks and four weeks of Portraiture with Anthea da Silva.

Other workshops held at the Gallery included Mindfulness, Melt and Movement with Pauline Mullen, Yoga and meditation with Christine Katen and Saskia Haalebos taught an afternoon of printmaking and book binding. Drop in and Draw is a popular weekly program run by our Education Officer held each Thursdays during exhibitions. Saturday workshops held this financial year included a Knitting Circle with artist Kate Just, Natural Dye workshop with Rebecca Mayo, Sculpture with Lucinda McDonald and Women's Weaving Circle with Jodie Munday of Cr8ive Art.

In-Conversations, Artist Talks and Panel discussions are delivered at least once per exhibition. Talks included those delivered by exhibiting artists, curatorial talks, panel discussions and special interest talks. Talks and exhibition tours were also provided for special interest groups and bus tours on request. The Gallery worked with sixteen professionals to deliver twelve talks in 2022/23. Guests included leading artists, writers and creatives including G.W Bot, Bonita Ely, Jennifer Lamb, Julian Meagher, Clara Adolphs, Julia Gutman, Raquel Ormelia, Jenny Bell and Anne Sanders.

One hundred and forty seven people attended talks at the Gallery in 22/23.

Access and Equity of Services to All

In addition to providing services for all citizens of our community, Goulburn Mulwaree Council provides services for frail aged people, people with disabilities, geographically and socially isolated people, and disadvantaged youth. Funded Coordinators use a network of part time staff and volunteers to provide these services.

Goulburn Leisure Link

Goulburn Leisure Link is a social support program for people with disability, it provides social, sporting, and recreational activities designed to increase community participation and independence. It provides opportunities to enhance social skills and to develop and maintain friendships and networks. The activities are planned through regular consultation with clients who attend the program. The activities are organised and delivered by the Coordinator and Client Support Officer, with support from volunteers. The program is based at the Goulburn Community Centre at 1/155-157 Auburn Street, Goulburn. Fees for service are claimed through the National Disability Insurance Agency (NDIA) via the National Disability Insurance Scheme (NDIS). The program operates and meets standards outlined in the *NDIS NSW Enabling Act 2013* and the *Disability Inclusion Act 2014*.

Goulburn Neighbour Aid – Aged Care Social Support Program

This program supplies a range of services that provide socialisation, companionship and practical support and assistance to frail aged people, seniors with disability and their carers. The program aims to enable them to remain independent in their own homes, within the Goulburn Mulwaree Local Government area. Services include centre-based day care programs at the Goulburn Community Centre at 1/155-157 Auburn Street, Goulburn four days per week and the Brewer Centre in George Street, Marulan one day per week. The service is operated from the Goulburn Community

Centre at 1/155-157 Auburn Street, Goulburn. This program is funded by the Australian Government, My Aged Care – Commonwealth Home Support Programme.

The services listed above endeavour to ensure that support services are available without discrimination to people living within the Goulburn Mulwaree Local Government Area. It is important that people are not excluded from access to social support services on the grounds of their gender, marital status, religious or cultural beliefs, political affiliation, particular disability, ethnic background, age, sexual preference, ability to pay, geographical location, or the circumstances of their carer.

Goulburn Youth Services

Youth workers assist young people to engage in a range of programs and activities aimed at building a sense of belonging, enhanced life skills, strengthening peer networks, and providing enjoyment. These are planned using a co-design model with a genuine focus on collaboration with youth. Programs and activities are made available at no or very low cost to ensure disadvantaged youth can participate. Where needed, workers can also link young people to other local youth services. Our Youth workers provide support to young people with schoolwork and further education opportunities, employment assistance and much more.

Access Committee

Council does not currently have an Access Committee. Any new developments are assessed for compliance with the legislation to ensure appropriate access for people with disabilities.

Goulburn Mulwaree Disability Inclusion Action Plan 2021 - 2026

Council is required to undertake disability inclusion action planning under the *NSW Disability Inclusion Act 2014*.

The Goulburn Mulwaree Disability Inclusion Action Plan encompasses the following key focus areas:

1. Developing positive attitudes and behaviours in our community;
2. Creating communities that are nice for people to live in;
3. Helping people find good jobs and work they like doing; and
4. Having good ways of doing things that will help people use our services.

This Plan started on 1 July 2021 and concludes on 30 June 2026. It is for everyone with a disability, their families, carers, friends, and the whole community. The community is all the people who live in Goulburn Mulwaree area. This Plan sets out actions that Council will deliver in the next five years to help make life better for people with disability, their families, and carers. It also highlights the longer-term plans and strategies which guide Council's decision-making.

Some actions in this Plan are about continuing to do what we are doing well, and others are about improving the way we do things. Many actions will not cost Council additional money but require Council to do things differently. However, some actions in the Plan will require additional funds to build something or upgrade an existing facility or service. Council will consider all priorities and may apply for funding from external sources to help achieve the actions in the Plan.

A Disability Inclusion Action Plan Progress report is submitted to the Department of Communities and Justice in December each year.

A copy of Goulburn Mulwaree Council Disability Inclusion Action Plan can be found on Council's website by using the following link <https://www.goulburn.nsw.gov.au/Development/Plans-Strategies#section-7>

B. Our Economy

“To have a strong, growing economy that is resilient and provides for a diverse range of employment opportunities”

Strategic Objectives:

“Our location attracts business and industry, boosting our local economy and jobs”

Delivery Program Strategy		Activity	Measure	Status
B.1	Develop partnerships with the ACT Government and private industry growth and development.	B.1.1 Work collaboratively and regionally with Destination Southern NSW and the Southern Tablelands Councils	Implementation of Tablelands and Goulburn Mulwaree Destination Action Plans.	Completed
		B.1.2 Work collaboratively with the Canberra Region Joint Organisation	Implementation of Canberra Region Economic Development Strategy	Completed
B.2	Promote the region as an ideal location for emerging industries and start-ups.	B.2.1 Focussed marketing activities to promote Goulburn Mulwaree area as a desirable destination to live, work and invest.	Campaign activities undertaken.	Completed
			Number of new businesses attracted – reported to Council.	Delayed

“The local and regional tourism offering is expanded, increasing visitation to the region”

Delivery Program Strategy		Activity	Measure	Status
B.3	Market the region as a tourist destination, highlighting the regions unique rural character, natural environment, heritage and culture.	B.3.1	Focussed marketing activity to promote Goulburn Mulwaree area as a desirable destination to visit, live, work and invest.	Relevant tourism data collected and reported to Council.
		B.3.2	Development and delivery of new and maintenance of existing cultural and creative assets, including built heritage assets.	Appropriate funding and support provided for cultural and creative assets or ongoing service delivery, including conservation and development.
B.4	Identify opportunities to bid for regional, state and national events that deliver economic outcomes for the community.	B.4.1	Increase of sports tourism events delivered for the community.	New sports tourism events secured.
		B.4.2	Seek opportunities for hosting of conferences and other business based events.	Conferences and business events secured.
		B.4.3	Attract new cultural events.	Cultural events secured.

“Our local established and emerging businesses are supported to thrive”

Delivery Program Strategy		Activity	Measure	Status
B.5	Support small and home-based businesses to develop through streamlined processes and business support.	B.5.1 Continue to promote Shop 2580 marketing and gift cards.	Number of participating businesses in Shop 2580 Gift Card program and total sales reported to Council.	Completed
		B.5.2 Host events focused on small and homebased businesses in Small Business Month.	Business events in Small Business Month hosted.	Completed
B.6	Support village development and opportunities for business and growth.	B.6.1 Village Strategies prepared to identify opportunities for growth and capital improvements.	Adoption of Village Strategies.	Delayed/Deferred Tarago Village Strategy adopted. Other strategies pending outcome of strategic bushfire study, biodiversity study and other supporting documents to provide data to inform the plan making process.
B.7	Foster a diverse, adaptive, and innovative agricultural industry.	B.7.1 Review as required planning controls to protect rural land and provide flexibility to foster diverse, adaptive, and innovative agricultural industries.	Planning Controls updated where required.	Not Yet Commenced NSW DPI are yet to finalise state significant agricultural land mapping. Council did actively participate in the NSW DPE Agritourism reform process.
		B.7.2 Delivery of rural roads programs.	Completion of programs.	Completed
		Apply for grant funding for roads and infrastructure projects.	Successful grants for rural roads.	Completed

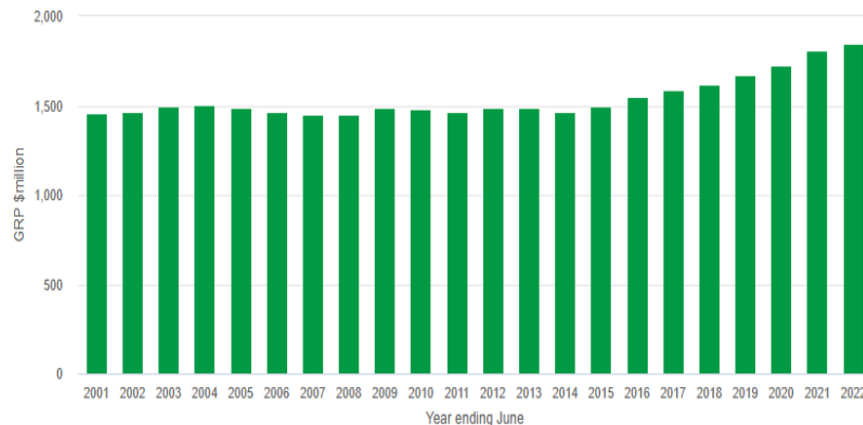
Delivery Program Strategy		Activity	Measure	Status
B.8	Enhance economic resilience to adapt and respond to shocks like COVID-19 and natural disasters.	B.8.1 Continued engagement with Goulburn and Marulan Chambers of Commerce.	Council representation at meetings.	Completed
		Promotion of Corporate2Community Business Resilience Program undertaken.	Promotion undertaken.	Completed
		B.8.2 SRBEC Workshops promoted and delivered.	Workshops held with strong attendance.	Completed

Economic Development Update

The local economy rebounded strongly following the uncertainty surrounding the COVID-19 pandemic. The Goulburn Mulwaree LGA has displayed strong growth for the year with an increase in growth of \$38 million. This growth rate of 2.15% exceeded that of the State which recorded growth of 1.87%.

Gross Regional Product

Goulburn Mulwaree Council area

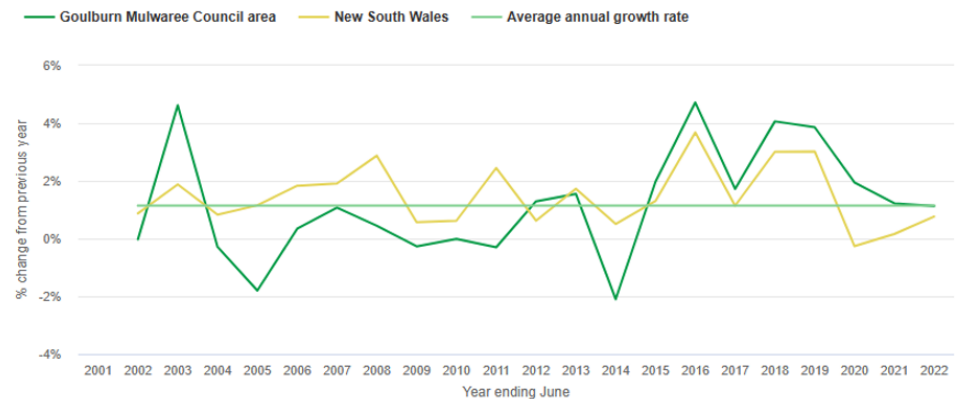


Source: National Institute of Economic and Industry Research (NIEIR) ©2022. ©2023. Compiled and presented in econ

This growth in Goulburn Mulwaree has been driven by the Health Care sector. Health Care and Social Assistance, Construction and Public Administration and Safety have recorded the highest value add in the Region. Manufacturing and Agriculture have also supported this economic activity.

There has been year on year jobs growth since 2014. There were 14,943 jobs in 2022 which has increased by 1,695 since 2017. Goulburn Mulwaree jobs growth was 1.13% compared to 0.76% for NSW. Health Care and Social Assistance, Construction and Retail Trade had the highest number of jobs in the region, with over 300 jobs added to Health Care and Social Assistance during the period.

Annual change in local jobs



Source: National Institute of Economic and Industry Research (NIEIR) ©2022. Compiled and presented in economy.id by .id (informed decisions)

Following on from this jobs growth, our unemployment figures decreased from 5.8% to 4.1% which is still slightly higher than the regional NSW figure of 3.2%. This is a significant turnaround from 12 months prior and continues to improve which is encouraging.

The Auburn Street vacancy rate was 10.6% at June 2023. Whilst this is a small increase from the previous quarter, it is still low in comparison to previous years. Whilst there are new businesses in the southern block, these have replaced existing businesses. The main driver of the increase has been the closure of 2 retail shops and the relocation of another to the Franklin Street complex at Mary's Mount. Both Goulburn Square and the Woolworths complex tenancies remain stable.

The financial year saw a number of major developments progressing in our region. Of the lodged Complying Development Certificates and Development Applications received by Council, there were 63 commercial/industrial applications totalling \$58 million.

Development also continues in our resources sector with this industry continuing to generate significant economic output for the region. Goulburn Mulwaree recorded the highest volume of outbound freight commodities for construction materials with 91% coming from this region.

Renewable energy projects continue to emerge within our LGA, and this is also expected to be a growth industry in future years. There are currently several projects both proposed and in progress that are at varying stages of development.

During the financial year Council adopted the 2023 update of the Southern Tablelands Regional Economic Development Strategy which was developed in conjunction with the NSW Government, Upper Lachlan Shire Council and Yass Valley Council. The 2023 REDS Updates build on the strong foundation created by the 2018 REDS with the strategy including

updated data and economic analysis, discussion of the key opportunities and challenges and updated strategies and enabling actions to guide and support economic development priorities.

Council continues to collaborate with the Goulburn Chamber of Commerce and Regional Development Australia Southern Inland on events and initiatives to support our business community. Including Small Business Month initiatives, Business Connect events and projects such as the Welcome Experience.

Economic Development staff work collaboratively across Council, including with the planning, compliance, grants and marketing teams, to facilitate sustainable development in the LGA.

C. Our Environment

“To appreciate our range of rural landscapes and habitats and are stewards of the natural environment for future generations”

Strategic Objectives:

“Our natural environment is maintained, protected and enhanced in line with community expectations”

Delivery Program Strategy	Action	Measure	Status
C.1 Protect and enhance the existing natural environment, including flora and fauna native to the region.	C.1.1 Development controls and policies reviewed in relation to biodiversity.	Policies reviewed.	Completed
	C.1.2 Ensure compliance action is taken where necessary to protect the environment and biodiversity	Action all complaints regarding illegal clearing and pollution incidents.	Completed
	C.1.3 Undertake review of active projects and cross organisational participation in enhancement and conservation projects.	Review completed.	Not yet commenced.
C.2 Implement effective integrated weed and pest animal management.	C.2.1 Undertake routine Biosecurity Weed Inspection program.	Completion of Annual Report on the outcomes of the Biosecurity Weed Inspection Program against objectives.	Completed

Delivery Program Strategy	Action	Measure	Status
---------------------------	--------	---------	--------

C.3	Protect and rehabilitate waterways and catchments.	C.3.1	Undertake On-site Sewage Management System Inspection Program.	Inspection program completed.	Completed
		C.3.2	Completion of annual programs and actively seek Grant funding opportunities related to the rehabilitation of waterways and catchments throughout the LGA.	Monthly status reports provided to Council in relation to Capital Works and Maintenance programs	Completed
		C.3.3	Undertake willow removal, noxious weed removal and revegetation along riverways by seeking grant funding opportunities.	Grant funding obtained.	Completed
				Funded programs completed.	Completed

“Adopt environmental sustainability practices”

	Delivery Program Strategy		Action	Measure	Status
C.4	Investigate and implement approaches to reduce our carbon footprint.	C.4.1	Continued education to encourage further recycling, re-use and composting rates.	Total quantity of waste diversion, recycling and composting rates reported in annual EPA return.	Education programs continue for recycling and greenwaste diversion.
		C.4.2	Sustainability measures considered for any new Council infrastructure.	All new Council infrastructure projects scoped to include sustainability measures.	Sustainability measures, including solar power generation, considered for all new infrastructure.

		C.4.3	Continue to monitor Council's greenhouse emissions.	Report provided to Council.	Council monitors greenhouse emissions through a third party provider Azility.
		C.4.4	Review and consider recommendations made by Council's Sustainability Working Party.	Report provided to Council.	Reported to Council for consideration.
C.5	Council to investigate and adopt environmentally sustainable practices across the organisation.	C.5.1	Re-establish staff Sustainability Working Party.	Working Party established.	Completed
		C.5.2	Commence implementation of short-term recommendations of Working Party.	Recommendations implemented.	Not yet commenced.
C.6	Work with community, businesses, government, and community support services to mitigate and adapt to the impact of climate change and adopt environmentally sustainable practices.	C.6.1	Facilitation of community and business participation in environmental sustainability programs, including BinTrim and Food Waste Donation programs.	Programs undertaken.	Community participation occurred in the CRJO Food Waste Donation Programs and the Resilience

“Our community is resilient to climate impacts”

Delivery Program Strategy	Action	Measure	Status
C.7 Improve tree cover in urban areas with low canopy to reduce impacts of heat sinks.	C.7.1 Undertake tree planting program in line with street tree program and Biodiversity Offset Policy.	Review progress via number of plantings, street tree audit or review of aerial mapping over time.	Completed
	C.7.2 Undertake programmed tree inspections within the urban street scape	Tree numbers are increased within road reserves within urban areas.	Completed
C.8 Improve community understanding of ways to care for yourself and others during extreme weather events and natural disasters.	C.8.1 Communication of public health notifications through social media	Ongoing; measure engagement through social media	Completed
	C.8.2 Use of website and social media to communicate during natural disasters		Completed
C.9 Plan for and maintain climate resilient community facilities that cater to community needs in changing conditions.	C.9.1 Plan for Essential infrastructure that is useable in various climatic conditions.	Community focussed facilities where residents can access services in most weather conditions.	CRJO preparing the Resilience Blueprint. Insulation of animal pens and installation of weatherproof blinds at the Goulburn Mulwaree Animal Shelter complete.
C.10 Plan, respond and recover from natural disasters.	C.10.1 Development and maintenance of risk management plans in relation to flooding, bushfire etc in relation to land use planning.	Development of Risk Management Plans commenced.	Not yet commenced
	C.10.2 Construction of new Emergency Operations Centre at Hetherington Street, Goulburn	Design and construct tender awarded	Construction will commence in 2024.

Our rural character and natural landscapes are protected and maintained”

Delivery Program Strategy	Action	Measure	Status
C.11 Maintain a balance between growth, development, environmental protection and agriculture through sensible planning.	C.11.1 Prepare individual Village Strategies to identify opportunities for growth and capital improvements.	Adoption of Tarago Village Strategy.	Completed
C.12 Economic growth and development will consider the rural character, local environmental and historical features and community aspirations.	C.12.1 Undertake review of Council’s Employment Lands Strategy	Review commenced.	Review to commence during Q3 2023/24.
C.13 Implement planning and development policies and plans that protect our built cultural and natural heritage.	C.13.1 Review LEP and DCP to ensure sufficient incentives are available to encourage the adaptive reuse of heritage items.	Review completed.	Completed
C.14 Consider community feedback, local character and identity, economic factors and social impact in planning decisions.	C.14.1 Review Community Participation Plan.	Review completed.	Not yet commenced, not yet required.
C.15 Encourage positive social and environmental contributions from developers.	C.15.1 Utilise opportunities in Planning Agreements to provide community infrastructure for the public benefit.	As required.	Completed and ongoing as further opportunities present themselves.
	C.15.2 Review Local Infrastructure Contributions Plan and Developer Servicing Plan.	Reviews completed.	Completed

Enhancing Waste Management Waste and Recycling

The construction of the Goulburn Waste Management Centre, known as 'Re-Use Goulburn', is well underway and due for completion in early 2024. This project was delayed with Council's Contractor entering voluntary administration. The upgraded facility will include a Re-Use Hub (tip shop) and Recycling Shed with a Community Recycling Centre for hazardous waste streams.



Throughout 2022/23, waste streams continued to be recycled including cardboard, fridges, mattresses, polystyrene and steel. Council continues organics recovery and continues composting green waste received through domestic green lid bins and green waste delivered to site. This waste was transformed into nutrient rich compost at Council's own licenced composting facility at Goulburn Waste Management Centre.

This means Council is well prepared to play its role in helping the NSW Government achieve the target of net zero emissions from organic waste to landfill by 2030. The compost is of a very high quality with high nutritional values. It is sold for the low fee of \$26/cubic metre to encourage use by the local community. This ensures we can 'close the loop' on the organic waste generated locally allowing the product to be returned to lawns, gardens and sporting fields.

Endeavour Industries continued to provide the recycling service for Council, processing recyclables collected from yellow lid recycling bins and recycling delivered to Council's Waste Management Centres. Endeavour Industries employs disabled clients in a range of quality disability services that includes a commercial laundry, ironing services, small business services, security shredding and recycling. Council also has an arrangement with Endeavour Industries where any Container Deposit Scheme income generated from eligible containers in yellow lid bins is used by Endeavour Industries for upgrades to their recycling operations.

Over the year, Council's domestic collection team provided over 12,000 three bin services to Goulburn City and Marulan residents. There were also approximately 4,000 customers who had access to Council's rural waste card system, which enables the disposal of rubbish, recycling and organic waste at Council's waste centres by rural residents.

A weekend for the free disposal of bulky landfill waste and steel was held in November 2022 and a weekend for the free disposal of bulky recyclables such as mattresses, fridges, e-waste, steel and green waste was held in May 2023. These weekends were well received by residents disposing of waste at both weekends. These bulky waste weekends are funded through the Domestic Waste charge.

Council completed a number of waste education programs during the 2022/23 financial year that were well received. These included:

- Scrap Together, July to November 2022 – regional FOGO education campaign using social media, radio advertising, print media, letterbox drop and in-person events.
- Plastic Free July, July 2022 – national education campaign supported using social media. <https://www.plasticfreejuly.org/>
- Garage Sale Trail, October to November 2022 – national education campaign supported through social media, radio advertising and print media. <https://www.garagesaletrail.com.au/>
- National Recycling Week, November 2022 – national recycled education campaign supported through social media and radio advertising. <https://recyclingnearyou.com.au/nationalrecyclingweek/>
- Great Aussie Waste Challenge, June 2023 – local waste reduction campaign using social media. <https://www.thegreataussiewastechallenge.com/>



A new Re-Use Hub (tip shop) is under construction at Goulburn Waste Management Centre

D. Our Infrastructure

“Our infrastructure complements our natural surroundings and character while enhancing the lives of our community”

Strategic Objectives:

“Safe and quality transport options are available for all residents to access major centres and services”

Delivery Program Strategy	Action	Measure	Status
D.1 We advocate for and support better public and community transport options to enhance access to services for all residents.	D.1.1 Actively seek Grant funding opportunities related to public and community transport improvements throughout the LGA	Monthly status reporting of Capital Works and Maintenance programs	Completed
	D.1.2 Completion of Grants and Council projects related to public and community transport improvements	Grant funded projects completed in accordance to funding agreements	Completed
D.2 Plan for, maintain and improve road networks.	D.2.1 Allocate budget to facilitate annual Capital Works and Maintenance Programs	Annual works program with budget estimates against individual projects.	Completed
	D.2.2 Develop 5 year and 10 year forward works plan	A program of works listing individual projects with assigned priorities.	Delayed/Deferred Delayed due to obsolete asset data. New asset data will be available in 2023/24 to inform the process.
D.3	D.3.1 Actively seek Grant funding opportunities related to road safety and connectivity	Monthly status reporting of Capital Works and Maintenance programs.	Completed

	Advocate for funding to improve road safety, conditions and connectivity.		improvements throughout the LGA		
		D.3.2	Undertake annual programs related to road safety improvements	Annual program completed in accordance with grant funding requirements.	Completed
D.4	Support infrastructure that enables active and passive transport.	D.4.1	Construction and maintenance of active and passive transport routes.	Completion of construction and maintenance programs.	Completed
		D.4.2	Actively seek Grant funding opportunities related to active and passive transport improvements throughout the LGA	Submission of grant applications for public transport improvements.	Completed

“We are proud of our liveable and accessible local places and spaces”

Delivery Program Strategy		Action		Measure	Status
D.5	Upgrade community facilities to improve service provision and accessibility.	D.5.1	Construction of North Park Pavilion.	Project completed.	Completed
		D.5.2	Renewal of Public Amenities at Victoria Park.	Project completed.	Completed
		D.5.3	Resurface Netball Courts and upgrade lighting at Carr Confoy Sporting Fields.	Project completed.	Delayed/Deferred. Work scheduled for 2023/24.
		D.5.4	Renewal of North Park Public Amenities	Project completed.	Completed
		D.5.5	Renewal of playground at Tony Onions Park Marulan.	Project completed.	Completed
		D.5.7	Construction of Stage 2 of the Japanese Garden.	Project completed.	Delayed/Deferred. Work scheduled for 2023/24.
		D.5.8	Undertake annual Royal Life Saving Australia Audit.	Audit completed.	Delayed/Deferred. Work scheduled for 2023/24.
D.6	Green spaces are planned for and preserved to balance development and liveability.	D.6.1	Review and adoption of Hudson Oval Plan of Management	Formal adoption of Hudson Oval Plan of Management.	Delayed/Deferred. Due for completion in 2023/24
		D.6.2	Review and adoption of Cookbundoon Plan of Management	Formal adoption of Cookbundoon Plan of Management.	Delayed/Deferred. Due for completion in 2023/24
		D.6.3	Installation of new identification signage for graves.	Installation completed.	Delayed/Deferred. Due for completion in 2023/24.

		D.6.4	Installation of additional lawn beams for internments.	Installation completed.	Completed
D.7	Streetscapes and parking are accessible, well designed and maintained.	D.7.1	Completion of annual programs related to street scapes and accessible parking improvements	Monthly status reporting of Capital Works and Maintenance programs.	Completed
D.8	Protection and preservation of historic and heritage buildings.	D.8.1	Continuation of Heritage Advisory Program.	Service provided.	Completed
		D.8.2	Administer local Heritage Grant Scheme.	Grants distributed.	Completed
		D.8.3	Action all complaints regarding illegal works or non-compliance with heritage requirements.	Complaints actioned.	Completed

“Our existing community infrastructure is maintained and we plan for and support the development of infrastructure that meets community needs”

	Delivery Program Strategy		Action	Measure	Status
D.9	Advocate to the NSW and Federal Government to provide adequate health and medical facilities in the region.	D.9.1	Advocacy opportunities taken up when identified with NSW and Federal Government to provide adequate health and medical facilities in the region.	Advocacy activities reported to Council.	Completed
D.10	Support the development of community health and recreation services and infrastructure that is accessible to those experiencing transport barriers	D.10.1	Actively seek grant funding opportunities related to development of recreation services and infrastructure that is accessible to those experiencing transport barriers.	Grant funding identified and application made.	Completed
		D.10.2	Advocacy opportunities taken up when identified with relevant government agencies to support the development of State provided community health and recreation services and infrastructure that is accessible to those experiencing transport barriers through formal and in-formal platforms and delivery methods.	Advocacy activities reported to Council.	Completed
D.11	Ensure adequate and appropriate land is zoned for business and industrial purposes.	D.11.1	Review Employment Lands Strategy.	Review commenced.	Review to commence Q3 2023/24

D.12	New and existing infrastructure is designed and maintained with consideration of climate change impacts.	D.12.1	Completion of an upgrade to Goulburn Waste Management Centre	Project completed.	Ongoing as renewals completed.
-------------	--	--------	--	--------------------	--------------------------------

“Water, waste and sewerage services meet the needs of our community”

Delivery Program Strategy	Action	Measure	Status
D.13 Ensure high quality water supply options for the towns in the region.	D.13.1	Completion of annual operations and maintenance programs.	Completed
	D.13.2	Completion of annual capital works programs.	Completed
	D.13.3	Complete concept design and procurement of contractor for design and construction of the upgrade of the Marulan water filtration plant.	Concept for plant completed. Concept design and the preparation of Design and construction tender documentation underway
	D.13.4	Complete design of the Goulburn Water Treatment Plant solids handling facilities.	Assessment of alternatives completed. Planning proposal underway to rezone land to allow this work to be permissible.
D.14 Provide safe and efficient sewer collection services across the region.	D.14.1	Completion of annual operations and maintenance programs.	Completed
	D.14.2	Completion of annual capital works programs including the ongoing sewer rehabilitation program.	Completed

D.14.3	Construction of the Goulburn Reuse Scheme.	Construction completed.	Completed
D.14.4	Completion of Marulan Wastewater Treatment Plant detailed design and design and construction procurement commenced.	Detailed design completed and construction procurement commenced.	On Track Multi-year project. Water quality assessment commencing to determine ability to discharge to the nearby creek.

Delivery Program Strategy			Action	Measure	Status
D.15	Investigate safe and secure water supply and sewer collection options to accommodate regional growth and drought proof our communities.	D.15.1	Review and update the Integrated Water Cycle management Plan as per DPE guidelines.	Reviews completed.	On Track Multi-year project. IWCM requirements have changed to the Regulatory and Assurance Framework. Reviewing requirements for these new requirements.
		D.15.2	Review the Water and Sewer Strategic Business Plan as per the DPE Guidelines.	Reviews completed.	On Track Multi-year project. To be reviewed as part of the Regulatory and Assurance Framework.
D.16	Provide waste collection services that encourage the source separation of organic waste and recycling.	D.16.1	Continue to provide the current waste collection services that encourage source separation and consider options for improvement.	Completion of collection program	Completed
		D.16.2	Investigate increasing the collection frequency for Food Organics Garden Organics (FOGO) and domestic collections and decreasing the collection frequency of red (landfill) bins in such a way that community needs are still met.	Completion of investigation and development of recommendations.	Delayed/Deferred On hold until completion of the Waste Management Centre upgrade.
		D.16.3	Increase in the recycling and FOGO collection rates from Council's waste collection services.	Measurement of recycling and FOGO rates.	Completed

D.16	Provide waste collection services that encourage the source separation of organic waste and recycling.	D.16.4	Review Domestic Waste service options to enable a broader choice of service options priced relative to the cost of service provision	Completion of investigation and development of recommendations.	Delayed/Deferred On hold until completion of the Waste Management Centre upgrade.
		D.16.5	Investigate the provision of FOGO services to businesses and commercial properties.	Completion of investigation.	Not yet commenced.
		D.16.6	Continue to promote local businesses and community organisations (e.g. Endeavour Industries) that provide commercial recycling services.	Promotions completed.	Completed
D.17	Provide waste centres that prioritise and encourage recycling and reuse.	D.17.1	Construction and the commencement of operations of the ReUse Goulburn Centre (RUG) that will provide a community recycling centre, reuse hub as well as continued source separation of waste.	Construction completed and operations commenced.	On Track Multi-year project, construction in progress
		D.17.2	Advocate circular economy principles across the community and commercial sector.	Continued advocacy.	Completed
		D.17.3	Waste facilities that enable the separation of reusable materials, recyclables and organic waste for composting.	Measurement of recycling and composting rates from self-haul waste streams taken to Council's waste facilities.	Completed

“Improvements secured to future-proof telecommunications infrastructure”

Delivery Program Strategy		Action		Measure	Status
D.18	Advocate for servicing of telecommunications blackspot areas.	D.18.1	Opportunities for consultation and/or submissions to relevant Government Agencies or non-government organisations (NGOs) in relation to telecommunications blackspots are taken up.	Advocacy activities reported to Council.	Completed
		D.19.1	Opportunities for consultation and/or submissions to relevant Government Agencies or non-government organisations (NGOs) in relation to a more stable telephone and high speed internet communications network are taken up.	Advocacy activities reported to Council.	Completed
		D.19.2	Advocate to NBN Co for upgrade of telecommunications infrastructure in towns and villages	Advocacy activities reported to Council.	Completed

Road Management

Category	Capital Budget Category	Project Description	Total
URBAN	Footpath	FP 23/24 Goulburn Waterworks Footpath	\$63,721
URBAN	Footpath	FP Bradfordville School Footpaths PM (G)	\$6,681
URBAN	Footpath	FP Bradfordville School Footpaths Design (G)	\$1,100
URBAN	Footpath	FP Bradfordville School Footpaths Construction (G)	\$203,147
RURAL	Footpath	FP Marulan – Thoroughfare St to Train Station	\$1,750
URBAN	Shared Path	SP Schools Stimulus (G) – Mulwaree High to Middle Arm Rd Land Acquisition Survey	\$991
URBAN	Shared Path	SP Schools Stimulus (G) – Hume St PM	\$972
URBAN	Shared Path	22/23 Eastgrove Shared Pathway Preliminaries (G)	\$34,556
URBAN	Kerb & Guttering	K&G Queen & Dalley Street	\$655
URBAN	Kerb & Guttering	K&G Robinson St	\$35,729
RURAL	Guard Rail	Guardrail Windellama Road	\$144,844
RURAL	Guard Rail	Guardrail Mountain Ash Road	\$40,045
URBAN	Raise Thresholds	Wombat Crossing – Fitzroy St (G) PM	\$24,595
URBAN	Raise Thresholds	Wombat Crossing – Fitzroy St (G) Design	\$10,200
URBAN	Raise Thresholds	Wombat Crossing – Fitzroy St (G) Construction	\$139,707
URBAN	Raise Thresholds	Wombat Crossing – Deccan St (G) Design	\$13,155
URBAN	Raise Thresholds	Wombat Crossing – Deccan St (G) Construction	\$15,728
URBAN	Raise Thresholds	Wombat Crossing – Clinton St (G) Lighting	\$22,627
URBAN	Raise Thresholds	Wombat Crossing – Bourke St (G)	\$17,912
URBAN	Lines & Signs	Line Marking School Zone Patches and Dragon Teeth (G)	\$106,099
URBAN	Lines & Signs	School Zone Patches and Dragon Teeth (G) PM	\$65,339

Category	Capital Budget Category	Project Description	Total
URBAN	Resurfacing	22-23 Lookdown Road (CH5.77-7.0)	\$71,170
URBAN	Resurfacing	22-23 Oallen Ford Road (CH13.4-15.4)	\$39,993
URBAN	Resurfacing	22-23 Currawang Road - Post Const	\$1,254
URBAN	Resurfacing	22-23 Windellama Rd (CH22.34-22.44)	\$59,474
URBAN	Resurfacing	22-23 Rhyanna Rd (CH1.07-3.13)	\$58,713
URBAN	Resurfacing	22-23 Middle Arm Rd (CH17.55-19.21)	\$45,628
URBAN	Resurfacing	22-23 Mount Peddler Rd	\$4,046
URBAN	Resurfacing	22-23 Glencot Rd	\$2,411
URBAN	Resurfacing	22-23 Currawang Rd (CH11.5-12.61)	\$72,345
RURAL	Resurfacing	22-23 Bullamilita Rd (CH1.1-2.71)	\$71,895
RURAL	Resurfacing	22-23 Gap Rd (CH2.42-4.36)	\$56,194
RURAL	Resurfacing	22-23 Elm Grove Rd (CH0-1.0)	\$26,106
RURAL	Resurfacing	22-23 209 Taylors Cr Road (CH1.9-2.90)	\$41,113
RURAL	Resurfacing	22-23 Speedway Rd (CH0-1.25)	\$47,139
RURAL	Resurfacing	22-23 Henry Parkes Rd (CH2.01-3.27)	\$5,435
RURAL	Resurfacing	22-23 Spa Road	\$124,438
RURAL	Resurfacing	22-23 Winfarthing Road	\$22,236
RURAL	Gravel Resheeting	2021 Thornford Rd Gravel Resheeting	\$530
RURAL	Gravel Resheeting	22-23 Bullamalita Rd	\$35,031
RURAL	Gravel Resheeting	22-23 Merilla Lane	\$35,766
RURAL	Gravel Resheeting	21-22 Sims Lane	\$25,003
RURAL	Gravel Resheeting	21-22 Painters Lane	\$7,004

Category	Capital Budget Category	Project Description	Total
RURAL	Gravel Resheeting	22-23 Inverary Road	\$41,274
RURAL	Gravel Resheeting	22-23 Painters Lane	\$158,175
RURAL	Deterioration Works	Gurrundah Road	\$199,769
RURAL	Deterioration Works	Pomeroy Road	\$284,351
RURAL	Deterioration Works	Middle Arm Road	\$169,752
RURAL	Deterioration Works	Wollumbi Road	\$191,699
RURAL	Deterioration Works	Oallen Ford Road	\$36,784
RURAL	Deterioration Works	Towrang Road	\$495,779
RURAL	Deterioration Works	Towrang Road PM	\$303
RURAL - S94	Rural Road Rehabilitation	RHL Collector Rd Veolia	\$679,636
RURAL - S94	Rural Road Rehabilitation	RHL Collector Rd Veolia PM	\$360
RURAL - S94	Rural Road Construction	RHL Bungendore Rd	\$227
RURAL - S94	Rural Road Rehabilitation	RHL Lumley Rd	\$798
RURAL - S94	Rural Road Rehabilitation	RHL Brayton Rd - General Rehab	\$526
RURAL - S94	Rural Road Rehabilitation	RHL Brayton Rd – Heavy Patching	\$260,537
RURAL - S94	Rural Road Construction	RHL Ambrose Rd – Drainage Improvements	\$270,712
RURAL - S94	Rural Road Rehabilitation	RHL South Marulan – General Rehab	\$1,271
RURAL - S94	Rural Road Rehabilitation	RHL South Marulan – Heavy Patching	\$168,896
RURAL - S94	Rural Road Rehabilitation	RRRP/s94 Collex Bungendore Rd Preliminaries	\$12,296
RURAL - S94	Rural Road Rehabilitation	RRRP/s94 Collex Bungendore Rd Drainage	\$2,571
RURAL - S94	Rural Road Rehabilitation	RRRP/s94 Collex Bungendore Rd Pavement Formation	\$16,035
URBAN	Urban Road Rehabilitation	Wilson Drive Road Opening and Closing	\$38,786

Category	Capital Budget Category	Project Description	Total
URBAN	Urban Road Rehabilitation	Clinton Street Upgrades (Hume St to Deccan)	\$278
URBAN	Urban Road Rehabilitation	23/24 West Goulburn Freight Route-Clinton St	\$10,000
URBAN	Asphalt Program	22-23 McDermott Drive AC (Academy to Middle Arm Road)	\$91,390
URBAN	Asphalt Program	22-23 Victoria St (Citzen to Kinghorne)	\$70,346
URBAN	Asphalt Program	22-23 Bourke St (Clinton to Verner)	\$90,142
URBAN	Asphalt Program	22-23 Bradley St (Auburn to Bourke)	\$171,033
URBAN	Asphalt Program	22-23 Bourke St (Montague to Verner)	\$98,799
URBAN	Asphalt Program	22-23 Howard Bvd (McDermott to Towrang)	\$135,811
URBAN	Asphalt Program	22-23 Middle Arm Rd/Mary Mt Intersection	\$67,103
URBAN	Urban Road Rehabilitation	Deccan St Rehabilitation (G) -Preliminaries and Design	\$12,211
URBAN	Urban Road Rehabilitation	Deccan St Rehabilitation (G) PM	\$40,712
URBAN	Resealing	21-23 May St - South Bridge	\$33,982
URBAN	Resealing	21-23 Ottiwell St	\$37,503
URBAN	Resealing	22-23 Gorman Road	\$30,059
URBAN	Resealing	22-23 Burge Street	\$4,800
URBAN	Resealing	22-23 Loader Street	\$8,910
URBAN	Resealing	22-23 Hawthorne Street	\$7,900
URBAN	Resealing	22-23 The Avenue	\$4,427
URBAN	Roundabout	Kinghorne/Albert Roundabout (G) Preliminaries and Design	\$10,420
URBAN	Roundabout	Kinghorne/Albert Roundabout (G) PM	\$4,035
RURAL	Rural Road Construction	Jerrara Road Upgrade (G) Preliminaries and Design	\$8,752
RURAL	Rural Road Construction	Jerrara Road Upgrade (G) PM	\$5,075

Category	Capital Budget Category	Project Description	Total
RURAL	Rural Road Drainage	Cullulla Rd Causeway Renewal	\$542,526
RURAL	Rural Road Rehabilitation	Jerrara-Oallen Ford Rd Rehab– Jerrara Rd Pavement	\$1,950,381
RURAL	Rural Road Rehabilitation	Jerrara-Oallen Ford Rd Rehab – Oallen Ford Rd Pavement	\$4,677
RURAL	Rural Road Rehabilitation	Jerrara-Oallen Ford Rd Rehab – Jerrara Rd Drain Rectification	\$391,643
RURAL	Rural Road Rehabilitation	Jerrara-Oallen Ford Rd Rehab – Jerrara Rd PM	\$109,123
RURAL	Rural Road Rehabilitation	Jerrara-Oallen Ford Rd Rehab – Jerrara Rd Line marking	\$18,684
RURAL	Rural Road Rehabilitation	Jerrara-Oallen Ford Rd Rehab Jerrara Rd Guard rails	\$6,930
RURAL	Rural Road Rehabilitation	Goulburn Potholes Repair & Heavy patching	\$1,947
RURAL	Rural Road Rehabilitation	Rosemont Road Rehabilitation - Pavement	\$299,486
RURAL	Rural Road Rehabilitation	Rosemont Road Rehabilitation – Pavement	\$331
RURAL	Rural Road Construction	Mountain Ash Rd PM	\$30,740
RURAL	Rural Road Construction	Mountain Ash Rd Drainage/Stormwater	\$4,100
RURAL	Rural Road Construction	Mountain Ash Rd Wearing Course	\$232,533
RURAL	Rural Road Construction	Mountain Ash Rd Pavement Section 2	\$251
RURAL	Rural Road Construction	Mountain Ash Rd Pavement Section 3	\$217,797
RURAL	Rural Road Construction	Mountain Ash Rd Line Marking	\$9,725
RURAL	Rural Road Construction	Windellama Rd (G) Preliminaries (G)	\$52,109
RURAL	Rural Road Construction	Windellama Rd (G) Pavement Formation Stage 2	\$177,876
RURAL	Rural Road Construction	Windellama Rd (G) Drainage Works Stage 2	\$63,097
RURAL	Rural Road Construction	Windellama Rd (G) Wearing Course Stage 2	\$203,446
RURAL	Rural Road Construction	Windellama Rd (G) Signs & Lines Stage 2	\$5,000
RURAL	Rural Road Construction	Windellama Rd (G) Pavement Formation Stage 3	\$58,925

Category	Capital Budget Category	Project Description	Total
RURAL	Rural Road Construction	Windellama Rd (G) Drainage Works Stage 3	\$107,797
RURAL	Rural Road Construction	Windellama Rd (G) Wearing Course Stage	\$157,866
RURAL	Rural Road Construction	Windellama Rd (G) Pavement Formation Stage 4	\$111,629
RURAL	Rural Road Construction	Windellama Rd (G) Drainage Stage 4	\$67,940
RURAL	Rural Road Construction	Windellama Rd (G) Wearing Course Stage 4	\$187,255
RURAL	Rural Road Construction	Windellama Rd (G) Pavement Section 1	\$280,430
RURAL	Rural Road Construction	Windellama Rd (G) Pavement Section 4	\$635,820
RURAL	Rural Road Construction	Windellama Rd (G) PM	\$103,787
RURAL	Rural Road Construction	Windellama Rd (G) Wearing Course Stage 1	\$61,264
RURAL	Rural Road Construction	Windellama Rd (G) Signs & Line Marking Stage 1	\$10,772
RURAL	Rural Road Construction	Windellama Rd (G) Pavement Section 3	\$399,673
RURAL	Rural Road Construction	Windellama Rd (G) Pavement Section 2	\$540,943
RURAL	Rural Road Construction	Windellama Rd (G) Culvert 2	\$30,811
RURAL	Rural Road Construction	Windellama Rd (G) Pavement Section 5	\$1,249
RURAL	Rural Road Rehabilitation	Currawang Rd Stabilisation PM	\$755
RURAL	Rural Road Rehabilitation	Currawang Rd Stabilisation Pavement Stabilisation	\$126,621
REGIONAL	Regional Road Construction	Highland Way – Rural (RRBG) Preliminaries	\$20,064
REGIONAL	Regional Road Construction	Highland Way – Rural (RRBG) PM	\$29,359
REGIONAL	Regional Road Construction	Highland Way – Rural (RRBG) Drainage	\$76,627
REGIONAL	Regional Road Construction	Highland Way – Rural (RRBG) Pavement Formation	\$41,855
REGIONAL	Regional Road Construction	Highland Way – Rural (RRBG) Line Marking	\$18,182
REGIONAL	Regional Road Construction	Highland Way – Rural (RRBG) Pavement Rehab	\$229,011

Category	Capital Budget Category	Project Description	Total
REGIONAL	Regional Road Construction	Highland Way – Rural (RRBG) Wearing Course	\$64,154
REGIONAL	Regional Road Rehabilitation	Windellama Rd Rehabilitation Stage 5 (G) Preliminaries	\$44,568
RURAL	Rural Bridge Construction	Towrang Rd Bridge Replacement Preliminary/Design	\$197,125
RURAL	Rural Bridge Construction	Towrang Rd Bridge Replacement PM	\$19,446
RURAL	Rural Bridge Construction	Towrang Rd Bridge Replacement Land Acquisition	\$15,457
RURAL	Rural Bridge Construction	Towrang Rd Bridge Replacement Approaches – BE	\$23,900
RURAL	Rural Bridge Construction	Towrang Rd Bridge Replacement Approaches 0 SWD	\$8,755
RURAL	Rural Bridge Construction	Towrang Rd Bridge Replacement Approaches – PVTWC	\$10,909
RURAL	Rural Bridge Construction	Towrang Rd Bridge Replacement Safety Barrier	\$82,000
RURAL	Rural Bridge Construction	Towrang Rd Bridge Replacement Signage	\$14,655
RURAL	Rural Bridge Construction	Carrick Rd Bridge Upgrade Prelim/Design	\$1,342
RURAL	Rural Bridge Construction	Carrick Rd Bridge Upgrade Approaches – BE	\$6,000
RURAL	Rural Bridge Construction	Carrick Rd Bridge Upgrade - Approaches – PVT	\$216,960
RURAL	Rural Bridge Construction	Carrick Rd Bridge Upgrade Safety Barrier	\$25,920
RURAL	Rural Bridge Construction	Carrick Rd Bridge Upgrade Line Marking	\$2,328
RURAL	Rural Bridge Construction	Carrick Rd Bridge Upgrade Signage	\$5,840
RURAL	Rural Bridge Construction	Carrick Rd Bridge Upgrade Contingencies	\$149,101
RURAL	Rural Bridge Construction	Mayfield bridge Replacement Preliminaries	\$10,712
RURAL	Rural Bridge Construction	Mayfield bridge Replacement PM	\$34,273
URBAN	Drainage	Bradley St Drainage Upgrade Preliminaries	\$15,063
URBAN	Drainage	Bradley St Drainage Upgrade Construction	\$431,246
URBAN	Drainage	Bradley St Drainage Upgrade PM	\$234

Category	Capital Budget Category	Project Description	Total
URBAN	Drainage	Bradley St Drainage Upgrade Investigation	\$37,547
URBAN	Drainage	Bradley St Drainage Upgrade Pipe Supply	\$213,392
URBAN	Drainage	Addison St 600 mm Piping	\$191,581
URBAN	Drainage	Addison/Faithful St Preliminaries	\$61,920
URBAN	Drainage	Addison/Faithful St Construction	\$750,497
URBAN	Drainage	Blackshaw Boom Gates	\$90,093
RURAL	Drainage	20-21 Roseberry St - Tarago	\$171,913
RURAL	Drainage	22-23 Gurrundah Road	\$35,898
RURAL	Drainage	22-23 Pomeroy Road	\$9,790
RURAL	Drainage	22-23 Middle Arm Road	\$18,121
RURAL	Drainage	22-23 Garrorigang Stormwater Improvements Design and Investigation	\$8,040
RURAL	Drainage	22-23 Garrorigang Stormwater PM	\$7,301
RURAL	Drainage	22-23 Garrorigang Stormwater Construction	\$21,572
Total			\$16,395,431

E. Our Civic Leadership

"Our leaders operate ethically with good governance and empower residents to participate in community development"

Strategic Objectives:

"Council is effective, financially sustainable and responsible"

Delivery Program Strategy			Action	Measure	Status
E.1	Council practices and processes are undertaken in a safe manner that meets legislative requirements.	E.1.1	Annual review of Council’s risk registers.	Annual reviews are completed.	Delayed Annual review to be undertaken throughout October/November 2023
		E.1.2	Annual review of legislative compliance database.	Annual review completed	Delayed/Deferred Staff vacancies caused this project to be deferred to 2024.
E.2	Manage resources in a responsible manner that supports the ongoing viability of Council.	E.2.1	Report on Council's Financial position and performance.	Monthly Council Reports and unqualified audit.	Completed
		E.2.2	Procurement activities undertaken in accordance with Council procedures and legislative requirements.	Demonstrated compliance to Council’s procurement policies and procedures.	Completed
		E.2.3	Projects undertaken with a strong focus on project management to ensure all projects are completed within allocated budget and agreed timeframe.	Projects meet timeframes.	Completed
				Projects within budget	Partially completed A number of projects exceeded budget throughout the year
Delivery Program Strategy			Action	Measure	Status

E.3	Governance provides a sound basis for decision making.	E.3.1	Facilitate the review of Council policies and procedures.	Policies and procedures reviewed every two years.	Completed
		E.3.2	Internal audit function implemented.	Internal audit plan confirmed and audits undertaken.	Completed
		E.3.3	Joint audit, risk and improvement committee formed and in operation.	Meetings held as per schedule.	Completed
		E.3.4	Facilitation of a program of Governance related training of Councillors and relevant staff.	Training provided on a minimum of 2 topics per year (face to face or on-line).	Completed
E.4	Make doing business with Council easier.	E.4.1	Provide quality customer service from the Customer Service Business Unit.	Customer Service satisfaction survey responses >85% good/excellent.	Completed
		E.4.2	Develop, maintain and improve Council's Corporate Software/Network systems.	Maintain system availability > 95%	Completed
		E.4.3	Support Council's information and communication technology.	Percentage of support requests resolved on time > 80%	Completed
		E.4.4	Implement cyber security provisions to ensure security of Council held data and information.	No security breaches.	Completed
E.5	Council actively participates in regional bodies such as the Canberra Region on Joint Councils to identify opportunities for our region.	E.5.1	Actively participate in the CRJO and working groups.	Continued participation.	Completed
E.6	Manage assets in a proactive way across their lifespan.	E.6.1	Review and update strategic asset management plans and provide recommendations for the following period.	Review completed.	Commenced but not yet complete

“Our community is informed and engaged in decision making”

	Delivery Program Strategy		Action	Measure	Status
E.7	Council seeks to understand the aspirations of the community and works collaboratively to solve local issues.	E.7.1	Maintain an up to date Community Participation Plan with use of relevant media to encourage community collaboration and engagement.	Ongoing review as required.	Completed
E.8	Our community is empowered to access engagement opportunities and provide input into the future direction of the region.	E.8.1	Council ensures engagement methods are open and inclusive.	Community engagement on key strategic documents is high.	Completed
		E.8.2	Council uses traditional media alongside social media and face to face engagement.	Budget allocated for print and radio advertising to promote engagement activities	Completed
E.9	Residents have access to timely, relevant and accurate information about issues that affect them.	E.9.1	Maintain up to date information on Council’s website.	Information provided is relevant and up to date.	Completed
		E.9.2	Provide timely media releases and briefings to traditional media	Media releases provided for all relevant projects and events	Completed
E.10	We engage ‘hard to reach’ parts of our community in decisions that affect them and our region.	E.10.1	Undertake community outreach meetings on a yearly basis.	Community outreach meetings are held.	Not held. 2022 Outreach Meetings were held in early 2022.
		E.10.2	Implement innovative engagement tools to reach our youth.	Youth engagement increased.	Completed
E.11	Residents from across the community are encouraged and supported to become involved in regional decision making forums.	E.11.1	Publicise regional decision making forums to community where available.	Participation in forums.	Completed

Financial Assistance Summary

During 2022-2023 \$69,124 was awarded to organisations and individuals under Council's Financial Assistance Policy.

Non-Discretionary Financial Assistance	Amount Awarded	Mayoral Discretionary Fund	Amount Awarded
Marulan Lions Club	\$1,690.00	Marulan Public School	\$1,000.00
Sydney Wanderers	\$750.00	Goulburn High School P & C	\$1,000.00
Goulburn RSL Sub-Branch	\$4,950.00	Goulburn Chamber of Commerce	\$400.00
Goulburn Lilac Festival	\$1,216.78	Compassionate Friends of NSW	\$154.00
Christmas in the Park	\$805.00	Make A Wish Foundation	\$250.00
Lieder Theatre	\$5,500.00	Goulburn High School	\$400.00
St Peter & Pauls Cathedral	\$400.00	Goulburn Sustainable Landscape Expo	\$1,000.00
Rotary Club of Goulburn Inc.	\$896.00	Goulburn & District Netball Association	\$500.00
Goulburn & District Art Society	\$2,500.00	Bill Starr	\$55.00
Goulburn Relay for Life	\$1,715.50	Goulburn Relay for Life	\$122.73
Portraits on Main	\$840.00	Southern Tablelands CWA Education Committee	\$1,000.00
Convoy for Kids	\$2,091.00	Goulburn CWA	\$1,396.00
Goulburn AP & H Society	\$3,500.00	Invictus Australia	\$250.00
Harmony Day	\$336.36	NAIDOC Week Initiatives 2023	\$500.00
Riding for the Disabled	\$600.00	Goulburn Invitational Charity Golf Day	\$1,200.00
Ben & Jake Staines	\$5,000.00	Goulburn Tennis Club	\$1,000.00
CareSouth Goulburn Branch	\$84.00	Right to Work Goulburn	\$500.00
NSW Farmers Association	\$175.00	Marulan & District Historical Society	\$1,000.00
Goulburn Railway Heritage Centre	\$600.00	House of Smoke & Fire - Goulburn Rotary	\$849.05

Non-Discretionary Financial Assistance	Amount Awarded	Mayoral Discretionary Fund	Amount Awarded
RSPCA Million Paws Walk	\$295.44	The Goulburn Group	\$588.05
Rotary Club of Goulburn Inc.	\$4,495.00	Cystic Fibrosis Goulburn 65 Roses Charity Dinner	\$200.00
Goulburn North Public School Fireworks	\$455.00	Matthew Kayne	\$250.00
Marulan Australia Day Committee	\$395.10	Ben Williams	\$1,000.00
Challenge Foundation Bus Hire - Christmas Party	\$200.00	Goulburn Police - Pink & Black Cancer Auction Night	\$1,277.00
Endeavour Industries Goulburn Incorporated	\$5,000.00	Goulburn Street & Classic Car Club Inc.	\$1,232.50
Disability Trust	\$210.00		
Grand Pacific Health	\$175.00		
Southern Inland Malayalee Association (SIGMA)	\$455.00		
Tallong Apple Day Festival	\$5,000.00		
Regional Development Australia Southern Inland	\$200.00		
Sydney Wanderers	\$894.16		
Pejar Local Aboriginal Land Council	\$175.42		
BDCU Goulburn Hospital Fundraising Inc.	\$400.00		
Total	\$51,999.76	Total	\$17,124.33

CBD Grants Awarded

During 2022 – 2023 the following CBD Grants awarded:

CBD Property Address	Project Description	Total Project Cost	CBD Funding
78 Bradley Street	Replace front fence	\$8,650	\$2,500
33-35 Montague Street	Paint	\$43,340	\$10,000
11 Montague Street	Roof repairs	\$23,547	\$5,000
115 Auburn Street	Paint	\$16,280	\$5,000
2 Montague Street	Replace Gutters	\$4,930	\$2,500
Totals		\$96,747	\$25,000



*33-35 Montague Street, Goulburn
Paint restoration*



*115 Auburn Street, Goulburn
Paint restoration*

Heritage Grants Awarded

During 2022 – 2023 the following Heritage Grants were awarded:

Heritage Item Address	Project Description	Total Project Cost	Local Heritage Funding
5 Kadwell Street	Re-roof	\$40,000	\$4,000
101 Lagoon Street	Paint	\$43,000	\$5,000
92 Bradley Street (application has 94)	Paint timber	\$8,531	\$2,500
Mortis St Cemetery	Grave conservation	\$6,521	\$2,500
13 Grafton Street	Repoint brickwork	\$3,300	\$1,650
32 Wayo Street	Tile front verandah - Federation tiles	\$10,952	\$1,000
77 Bradley Street	Paint	\$14,389	\$2,500
147 Addison Street Trinity	Paint Wexted Oval Pavillion	\$15,000	\$5,000
83 Kinghorne Street	Roof repairs	\$29,889	\$3,730
252 Cowper Street	Repoint brickwork, paint & damp-proof course	\$7,290	\$2,500
14 Day Street	Restoration of brickwork	\$27,500	\$2,500
Totals		\$206,372	\$32,880



*5 Kadwell Street, Goulburn
Roof restoration*

Grants Received Summary

Council gratefully acknowledges the following organisations that have approved Grants to Council. The total amount awarded is \$35,275,558

Grant Project Name	Grant Program	Funding Body	Source	Grant Amount Approved
Bladwell Park Infrastructure Upgrade	Stronger Country Communities Fund 5	Department of Regional NSW	State	\$290,300.00
BMX Bike Track	Club Grants - Infrastructure Grants	Office of Gambling	State	\$150,000.00
Carr Confoy Cricket Pitches and Practice Facilities Refurbishment	Natural Disaster Recovery Fund	Cricket Australia	Federal	\$30,000.00
Carr Confoy Netball Court Lighting Upgrade	Stronger Country Communities Fund 5	Department of Regional NSW	State	\$286,800.00
CBD/South Goulburn Connection Pathway	NSW Get Active	Transport for NSW	State	\$3,217,280.00
Clinton Street Heavy Vehicle Route Upgrade	Heavy Vehicle Safety and Productivity Programme	Department of Infrastructure, Transport & Regional Development	Federal	\$2,386,494.00
Connect, Support and Empower Youth Program	Youth Investment Program	Office of Regional Youth	State	\$583,578.60
Crown Lands Floods Applications for Recreation Ground	Crown Land Flood Recovery Program	Department of Planning, Industry and Environment	State	\$52,150.00
Eastgrove Shared Pathway Project	Walking and Cycling - Active Transport	Transport for NSW	State	\$2,015,000.00
Eastgrove South Sports Field Improved drainage and levelling	Essential Community Sport Assets Program	Office of Sport	State	\$1,000,000.00

Grant Project Name	Grant Program	Funding Body	Source	Grant Amount Approved
Goulburn Australia Day 2023	National Australia Day Council	National Australia Day Council	State	\$30,000.00
Goulburn Mulwaree - Road Pot Holes Repair	Regional and Local Roads Repair Program	Transport for NSW	State	\$2,335,601.00
Goulburn Mulwaree Autumn School Holiday Program	Regional Youth Autumn 2023 Holiday Break Program	Department of Regional NSW	State	\$6,704.94
Goulburn Mulwaree High Risk Pathways Blackberry Eradication Project	Early Needs Management Program	Department of Regional NSW	State	\$121,813.00
Goulburn Rail Trail Business Case Development	Regional NSW - Business Case and Strategy Development Fund Round 1	Department of Regional NSW	State	\$147,775.00
Goulburn Regional Art Gallery - new gallery development	Creative Capital Minor Works and Equipment Round 2	Create NSW	State	\$119,356.00
Goulburn Waste Water Treatment Plant Upgrade (Stage 2)	Accelerated Infrastructure Fund Round 3	Department of Planning, Industry and Environment	State	\$11,261,775.00
Highland Way 4.6km to 6.7km - RR7636	Regional Road Repair Program	Transport for NSW	State	\$96,293.00
January 2022 Storm Damage	AGRN1001 Natural Disaster Funding	Transport for NSW	State	\$2,989,490.40
Marulan Soccer Fields Lighting/Drainage Upgrade	Stronger Country Communities Fund 5	Department of Regional NSW	State	\$423,850.00
Marulan Waste Water Treatment Plant Upgrade Full Application	NSW Regional Housing Fund	Department of Planning, Industry and Environment	State	\$1,400,000.00

Grant Project Name	Grant Program	Funding Body	Source	Grant Amount Approved
Mayfield Road Bridge Upgrade	Fixing Country Bridges	Department of Infrastructure, Transport & Regional Development	State	\$1,468,667.00
PAMP/Cycling Study	Walking and Cycling - Active Transport	Transport for NSW	State	\$121,977.00
Planning Cadetship/training	Strong Start Cadetship program	Department of Planning, Industry and Environment	State	\$25,000.00
Goulburn Mulwaree LGA Pothole Repair	Fixing Local Roads - Pothole Repair Program	Transport for NSW	State	\$439,896.00
Prell Oval Amenities Block	Crown Reserves Improvement Fund	Department of Planning, Industry and Environment	State	\$109,882.72
Range Road Culvert Upgrade	Bridges Renewal	Department of Infrastructure, Transport & Regional Development	Federal	\$565,968.00
Riverside Park Amenities and Park Infrastructure	Stronger Country Communities Fund 5	Department of Regional NSW	State	\$199,575.00
Rocky Hill Memorial Tower Conservation	Saluting Their Service	Department of Veterans Affairs	Federal	\$132,250.00
Ross Whitaker Pavilion Female Facilities Upgrade	Female Friendly Community Sport Facilities and Lighting Upgrades Program 2022/23	Office of Sport	State	\$98,004.00
Small heritage grants program + heritage advisor	Local Government Heritage Grants	Office of Local Government	State	\$25,000.00
Summer Holiday Break Activities	Regional Youth - summer Holiday Break Program	Department of Regional NSW	State	\$15,000.00
Tallong War Memorial Mortar Restoration	Community War Memorials	Department of Veterans Affairs	State	\$7,500.00

Grant Project Name	Grant Program	Funding Body	Source	Grant Amount Approved
Tarlo Street Graffiti Project	Graffiti Management Program	Department of Communities and Justice	State	\$71,517.00
Tree Tops excursion & GRAG mural activity	Regional Youth - Spring Holiday Break Grant	Department of Regional NSW	State	\$7,000.00
Windellama Road Rehabilitation (Stage 2)	Fixing Local Roads	Transport for NSW	State	\$3,000,000.00
Wollondilly River Rejuvenation Project	Habitat Action Grants	Department of Primary Industries	State	\$40,000.00
Youth Week 2023	Youth Week Grants Program	Department of Communities and Justice	State	\$4,061.20



*Japanese Screens on Amenity Block – Seiffert Oval
Funded by Crown Reserves Improvement Fund*



*Tallong Path, Basketball Court, Skatepark & Sheltered Picnic Table
Funded by Bushfire Local Economic Recovery Fund*

Environmental Planning and Assessment Act 1979 No. 203

Planning agreements are voluntary agreements entered into by the Council and a developer to deliver public benefits in relation to either a planning proposal (rezoning) or a development application. The agreements can include public benefits such as:

- The dedication of land to Council;
- Public infrastructure;
- Affordable housing;
- Monetary contributions;
- Community facilities;
- Any other material public benefit or any combination of these

Council entered into the following Planning Agreements during the period 1 July 2022 – 30 June 2023

Address	DA No	Date Executed
129 Marys Mount Road, Goulburn	DA/0311/1617	17 April 2023
10 Combermere Street, Goulburn	DA/0277/1920	21 April 2023

Partnership, Co-operatives and Joint Ventures

During 2022/23 Council was a member of the following organisations:

- Canberra Region Joint Organisation (CRJO)
- Regional Cities New South Wales
- South East Australian Transport Strategy (SEATS)
- Southern Tablelands Arts (STARTS) Inc.
- Country Mayors Association (CMA)
- South East Weight of Loads Group

Development Contributions

Environment Planning and Assessment Regulation 2021(EPA Reg) cl 218A(1), (2)(a),(b),(c),(d),(e),(f),(g) (3)(a),(b)

2022 - 2023 Developer Contribution Projects						
Project Number	Project Description	Type of Project	Developer Contribution Amount	Expenditure on project	% funded by Developer Contribution	Is project Complete?
100259	Sec94 Plans Review	General Fund - Administration	\$1,300	\$1,300	100.00%	Ongoing
100460	RHL Bungendore Rd - Veolia Sec 94	Roads	\$22,452	\$22,452	100.00%	Ongoing
190046	Goulburn WMC Improvements - New	Waste Centre	\$14,602	\$3,213,913	0.45%	Ongoing
190088	Drainage General Urban	Drainage	\$42,000	\$94,864	44.27%	Ongoing
190108	RHL Collector Rd - Veolia Sec94	Roads	\$679,996	\$679,996	100.00%	Ongoing
190113	Rural Resealing	Roads	\$19,071	\$950,589	2.01%	Ongoing
190140	City Wide Creek Bed Improvements	Waterways	\$56,799	\$74,481	76.26%	Ongoing
190215	RHL Brayton Rd - Gunlake Sec 94	Roads	\$261,062	\$261,062	100.00%	Ongoing
190216	RHL Ambrose Rd - Gunlake Sec 94	Roads	\$220,712	\$220,712	100.00%	Ongoing
190221	RHL South Marulan - Boral Sec 94	Roads	\$170,167	\$170,167	100.00%	Ongoing
190315	RHL Mogo Road - Hi Quality S94	Roads	\$266,713	\$266,713	100.00%	Ongoing
190359	Mistful Park Reserve Improvements	Parks	\$25,000	\$25,000	100.00%	Completed

2022 - 2023 Developer Contribution Projects						
Project Number	Project Description	Type of Project	Developer Contribution Amount	Expenditure on project	% funded by Developer Contribution	Is project Complete?
190379	Bradley Street Drainage Upgrade Works	Drainage	\$134,963	\$697,481	19.35%	Ongoing
190390	Cullulla Road Causeway Renewal S 94	Roads	\$522,506	\$542,526	96.31%	Ongoing
190398	Urban Stormwater Drainage Upgrade	Drainage	\$74,240	\$1,003,997	7.39%	Ongoing
190400	21-22 Jerrara-Oallen Ford Road Rehabilitation	Roads	\$2,481,437	\$2,481,437	100.00%	Ongoing
190429	RRRP/ s94 Collex Bungendore Rd	Roads	\$24,869	\$30,902	80.48%	Ongoing
300001	Water Management - Administration	Water Services	\$174,235	\$4,632,791	3.76%	Ongoing
400001	Waste Water Management - Administration	Waste Water	\$148,642	\$4,911,730	3.03%	Ongoing
490008	Marulan WWTP - Renewal	Waste Water	\$12,825	\$20,347	63.03%	Ongoing
490011	STWRIS Stage 2 Reuse Irrigation Scheme (G)	Waste Water	\$766,927	\$5,180,402	14.80%	Ongoing
TOTAL			\$6,120,518	\$25,482,862		

Legal Proceedings Section 428 (2)(e)

Name	Status	Case Particulars	Amount
Governance Matters			\$16,915
Rates, Water and Debtors Recovery Action			Total = \$109,666 (22/23)
Development and Town Planning Matters			Total = \$216,129 (22/23)
Twynam Investments v Goulburn Mulwaree Council	Completed	Interim Heritage Order – 14597 Hume Highway, Marulan	\$2,652 (19/20)
		Proceedings 2019/373865	\$49,384 (20/21)
		Class 1 Appeal	\$12,793 (21/22)
			\$60,000 (22/23)
Council ats Semaan	Completed	555 Forest Siding Road	
		Against Refusal of a DA	\$10,342 (21/22)
		Against Refusal of a MOD	\$37,487 (22/23)
		Class 1 Appeal	
Filetron Pty Limited v Innovate Partners GMC – Second Respondent	Ongoing	154 Wollumbi Road, Marulan	
		Third Party Appeal against partial approval of DA/0288/2021	\$25,535 (21/22)
		Class 4 Judicial Review	\$52,828 (22/23)
Council ats BAC WMR Holdings	Completed	Wakefield Park Raceway	
		Appeal against the approval of DA/0117/2021	\$356,791 (21/22)
		Class 1 Appeal	\$12,896 (22/23)

Name	Status	Case Particulars	Amount
Council v Saras	Completed	204 Silverstream Road, Lower Boro	
		Appeal against Development Control Orders	\$5,915 (21/22)
		Class 1 Appeal	\$13,807 (22/23)
Council ats Landmark Group	Ongoing	30A Sloane Street, Goulburn	
		Appeal against the refusal of DA/0099/2122	\$22,564 (22/23)
		Class 1 Appeal	
Council ats MLH Pty Ltd	Ongoing	134 Marys Mount Road	
		Appeal against the refusal of DA/0514/2122	\$16,547 (22/23)
		Class 1 Appeal	

Mayoral Expenses

Mayoral Allowance	\$46,040
Mayoral Vehicle	\$6,056
Councillors Annual Fee (per Councillor)	\$21,100
Total Councillor Fee (Nine Councillors)	\$189,900
Councillor Superannuation	\$13,126
Overseas Visits	\$Nil
Interstate Visits	\$Nil
Travel Costs reimbursed to Attend Meetings	\$Nil
Councillor Technology Costs*	\$2,276
Councillor Telephone Call Costs	\$10,576
Councillor Conference & Seminars	\$4,940
Councillor Training & Skill Development	\$12,793
Costs for a spouse or other persons who accompanied a Councillor	\$Nil
Childcare Costs	\$Nil

* As previously reported last financial year, operational savings were made over the 2022-2023 financial year. Councillor technology cost was the result of a single new laptop.

Statement of Total Remuneration of Chief Executive Officer

During 2022-23, Council employed a Chief Executive Officer. Following is a statement of the total remuneration.

Section LGR 217 (B) Remuneration Component		Amount (\$)
(i)	Salary	\$299,500
(ii)	Additional payment	Nil
(iii)	Contribution to Superannuation	\$27,500
(iv)	Non cash benefits (private use of Council Vehicle)	\$13,000
(v)	Fringe Benefits Tax on Non-Cash Benefits	\$20,032.42

Statement of Total Remuneration of Senior Staff

During 2022-23, Council employed four Directors in addition to the Chief Executive Officer. Following is a statement of the total remuneration.

Section LGR 217 (C) Remuneration Component		Amount (\$)
(i)	Salary	\$815,023.21
(ii)	Additional payment	Nil
(iii)	Contribution to Superannuation	\$91,037.44
(iv)	Non cash benefits (private use of Council Vehicle)	\$52,000
(v)	Fringe Benefits Tax on Non-Cash Benefits	\$65,597.84

Statement of Total Number of Persons

Section 217 Local Government (General Regulation 2021)

Listed below are the total number of persons who performed paid work for Goulburn Mulwaree Council as at Wednesday 23rd November 2022.

Category	Number
Permanent full-time employees	233
Permanent part-time employees	17
Casual employees	25
Fixed term employees	9
Senior staff	5
Apprentice	3
Trainee	5
Contract Workers	2

Councillor Meeting Attendance 2022 – 2023

A total of 24 Council Meetings were held during the period 1 July 2022 – 30 June 2023. A number of Councillor Briefing Sessions were also held.

Councillors 1 July 2022 to 30 June 2023	Council Meetings	Councillor Briefings
Cr Peter Walker	24	16
Cr Steven Ruddell	24	16
Cr Andrew Banfield	20	10
Cr Michael Prevedello	22	12
Cr Bob Kirk	24	16
Cr Jason Shepherd	24	15
Cr Daniel Strickland	22	13
Cr Andy Wood	22	10
Cr Carol James	22	14

Councillor Induction & Ongoing Professional Development 2022 – 2023

Local Government (General) Regulation 2021 – Reg cl 186

Training/Conference/Seminar	Date	Councillors in Attendance
Local Government 2022 Conference – Hunter Valley	23-25 October 2022	Mayor Peter Walker Cr Steven Ruddell
Planning 101 Course – Local Government NSW	12 November 2022	Mayor Peter Walker Cr Bob Kirk Cr Steven Ruddell Cr Jason Shepherd Cr Andy Wood Cr Daniel Strickland Cr Andrew Banfield Cr Carol James
Understanding Local Government Finances for Councillors	11 February 2022	Mayor Peter Walker Cr Bob Kirk Cr Steven Ruddell Cr Jason Shepherd Cr Andy Wood Cr Daniel Strickland Cr Andrew Banfield Cr Carol James Cr Michael Prevedello
Regional Rural Summit – Sydney	19-20 February 2022	Mayor Peter Walker
Australian Local Government Association – National General Assembly of Local Government (NGA) Canberra	13-16 June 2022	Mayor Peter Walker

Private Works

During the period of 1 July 2022 to 30 June 2023, Council carried out private works for sewer \$62,505.14 and water \$323,432.19. There were no other private works carried out.

Regulations, Rates and Charges Written Off

Rates and charges written off during the 2022/2023 financial year:

S575 Pensioners	\$915,231.45 Total Claim
	\$411,854.15 Written off (45% of the total claim)
S585 Postponed	\$12,047.94

Water and Sewer Connections

The number of connections as at 30 June 2023:

- Water Connections 12,361 assessments
12,077 meters
- Sewer Connections 11,890 (not including flats)

Swimming Pools

The following provides activities relating to the inspections of private swimming pools in accordance with the Swimming Pools Act 1992 s22F (2) and Swimming Pools Regulation 2018 (SP Reg) cl 23.

Number of inspections of tourist & visitor accommodation	0
Number of inspections of premises with more than 2 dwellings	0
Number of inspections that resulted in the issuance of a certificate of compliance under section 22D of the Act	21
Number of inspections that resulted in issuance of a certificate on non-compliance under clause 21 of the Regulation	13
Applications undetermined	3

Stormwater Levy

Council does not levy an annual charge for stormwater management services.

Coastal Protection Services

Council does not levy an annual charge for coastal protection services.

Fisheries Management Act 1994, s220ZT(2)

Goulburn Mulwaree Council has not been identified in a recovery or threat abatement plan under the Fisheries Management Act 1994, s220ZT(2). There are no threatened fish species identified in the Local Government Area.

Additional Rate Variation

Under the Special Rate Variation Guidelines, 7.1, Council is required to report any activities funded via a special rate variation of general income. In March 2022, Council applied for the Additional Special Rate Variation for the 2022-2023 financial year that was offered by IPART and the Office of Local Government following general discontentment at the original 0.7% rate peg. The variation allowed Council to increase rates by 2.5% (1.8% above the original rate peg amount).

The information on the following page is provided in accordance with the requirements of the Instrument under Section 508(2) dated 16 June 2022.

General Fund	LTFP Projection '000	Actual 2022/23 '000	Variance '000
Income from continuing operations			
Rates & Annual Charges	23,075	23,162	87
User Charges & Fees	8,102	10,151	2,049
Interest & Investment Revenue	280	963	683
Other Revenues	1,526	1,354	(172)
Grants & Contributions Op Purposes	10,747	20,632	9,885
Grants & Contributions Capital Purposes	-	16,801	16,801
Internal Income ¹	19,299	-	(19,299)
Other Income	-	1,402	1,402
Total Income Continuing Operations	63,029	74,465	11,436
Expenses from continuing operations			
Employee Benefits & On-costs	24,093	24,240	147
Materials & Contracts	9,272	13,795	4,523
Borrowing Costs (i.e. interest costs)	658	999	341
Depreciation & Amortisation ²	17,398	22,496	5,098
Internal Expense ¹	13,140	-	(13,140)
Other Expenses	5,456	939	(4,517)
Net losses from the disposal of assets	-	5,650	5,650
Total expenses continuing operations	70,017	68,119	(1,898)

Notes:

1. Internal income and expenditure is consolidated out of the General Purpose Financial Statements and therefore is included in other categories of the General Fund e.g., User Charges and Fees and Materials and Contracts.
2. Depreciation was budgeted lower than anticipated due to the revaluation of roads in 2021/22 and revaluation of buildings in 2022/23 both were completed after the LTFP budget was approved. Additionally, the indexation of all asset classes in 2022/23 increased the depreciation more than anticipated.

The additional revenue generated by the additional Special Variation was \$401,760.

Companion Animal Act 1998 & Regulation

The following provides a statement of activities relating to the enforcement and compliance with the Companion Animals Act 1998 and Regulation.

The Council expended a total of \$470,682 during 2022/23 in the operation of the Goulburn Mulwaree Animal Shelter and the enforcement and compliance of the provisions of the Companion Animals Act 1998 and Regulation. This financial component does not incorporate the administrative and management costs associated with the operation of Councils Companion Animal Service Program.

Council completed significant works to upgrade the Animal Shelter and improve functionality, comfort and liveability throughout the 2022/23 financial year period as part of a Federal Grant Project, this consisted of the installation of insulating panels, weather proofing, floor sealant, roll down shade blinds and improved dog beds. Council have continued to reinforce current policy and procedure at the facility which emphasises limiting euthanasia, increased animal care standards, community engagement and a continued focus on rehoming and adoption. Council has also employed a dedicated Animal Shelter Attendant on a full-time permanent basis to focus on the day to day operation of the Animal Shelter, animal care and rehoming given the outstanding success of operations at the Shelter and the resultant increased workload. In 2022/23 Council rehomed 107 dogs and 63 cats from the Animal Shelter.

Council utilises the Guidelines on the Exercise of Functions under the Companion Animals Act 1998 to assist in meeting the obligations of the legislation as follows:

- The 2022/23 Pound Data Return was submitted by the due date.
- All dog attacks and orders for 2022/23 were recorded on the Companion Animal Register.

- Council supports the desexing of dogs and cats by only selling desexed animals from the Goulburn Mulwaree Animal Shelter.
- Enforcement of the Companion Animals Act and Regulation is undertaken via an educational approach regarding responsible pet ownership. Information is provided directly to pet owners and is also readily available on Council's website and routinely features on Council social media platforms and in media releases.
- Council is active in seeking rehoming opportunities for suitable unclaimed and surrendered animals. This is achieved by keeping suitable animals for longer than the statutory time frame, liaising with animal rescue groups to find homes for animals and actively promoting animal adoption in the local community. Council utilises social media to promote animals available for adoption in order to raise the profile of its animal rehoming efforts and also utilises this platform to return impounded animals to their owners where animals cannot be identified or registration details are not up to date.
- Council promotes responsible pet ownership in the community and recognises the importance of socialisation for both animals and their owners. As such there are five formally designated off leash areas for dogs located throughout Goulburn. These are located at Victoria Park (Cnr Faithfull & Clifford Streets), Eastgrove (Cnr Park Road & Hercules Street), West Goulburn/Garfield Park (Cnr Garfield Avenue, Francis Street & Wyatt Street), Jack White Park (Cnr of Progress & Wran Streets, alternative access via Dalley & Healey Streets) and Riverside Park (Off Quiberon Way).

Equal Employment Opportunity Management Plan

Goulburn Mulwaree Council is committed to our responsibilities under relevant legislation to provide a workplace that is free from bullying, harassment, discrimination and victimisation and provides Equal Employment Opportunities (EEO) for current and prospective employees by fostering a work environment that supports fairness, equity and respect for social and cultural diversity.

Council's EEO Management Plan encompasses the following objective and strategies:

1. **Communication of Policies and Programs:** To communicate EEO responsibilities, principles and practices to all current and potential employees.
2. **Collection and Recording of Appropriate Information:** To ensure that relevant information in relation to EEO is collected and recorded for the ongoing development of EEO programs and to monitor the effectiveness of the current EEO plan.
3. **Recruitment and Selection:** To ensure all Recruitment and Selection at Goulburn Mulwaree Council is undertaken in accordance with legislative requirements and EEO principles.
4. **Training and Development:** To ensure training and development procedures conform to EEO principles, which incorporates opportunities for training and development of EEO target group members.

5. Human Resources Policies and Procedures:

- a. To ensure all instances of advancement, transfer and higher duties are offered following fair and consistent processes where merit is established.
- b. To ensure any dispute/grievance that is raised is treated equitably and in accordance with Council's grievance resolution procedures.
- c. To ensure all employee conditions of employment conform to EEO principles.
- d. Ensure that Human Resources policies and procedures are non-discriminatory and are supportive to all employment groups.

Target Groups: To set strategies to assist employment for target groups. These groups include people from a non-English speaking background, people from an Aboriginal and Torres Strait Islander background, people with a disability, women in managerial roles and youth.

Modern Slavery Compliance

Modern slavery describes situations where coercion, threats or deception are used to exploit victims and undermine or deprive them of their freedom. Modern slavery can include serious forms of exploitation such as forced labour, human trafficking, slavery and slavery-like practices. These practices are serious crimes, grave abuses of human rights and have devastating impacts on survivors. Modern slavery does not include practices like substandard working conditions or underpayment of workers, although these practices are also illegal and harmful and may be present in some situations of modern slavery.

The *NSW Modern Slavery Amendment Act 2021* commenced on 1 January 2022. As a result, the *NSW Local Government Act 1993* was amended. From 1 July 2022, all NSW councils are required to take reasonable steps to ensure that the goods and services they procure are not the product of modern slavery.

Council is committed to work with all suppliers to improve the collective understanding, impact, identification, and risk management of modern slavery, in all supply chains.

Tender Respondents with an annual turnover of over \$100M are required to comply with the *Modern Slavery Act (Cth) 2018* and must show evidence of that compliance.

Tender Respondents not currently required to comply with the *Modern Slavery Act (Cth) 2018* are asked to consider, develop, and implement reasonable strategies to ensure the goods and services provided to Council are not the product of modern slavery. The Respondent may be asked to consent to a Modern Slavery Risk assessment by Council or its appointed representative.

Respondents identified as an unacceptable Modern Slavery Risk may, at Council's discretion, be asked to more actively investigate the supply chain of goods and/or services. If unwilling to adequately investigate the

supply chain process, the Respondent may be passed over and removed from further participation in the evaluation process.

There have been no issues raised by the Anti-slavery Commissioner during the year concerning the operations of the Council and identified by the Commissioner as being a significant issue.

Goulburn Mulwaree Council has undertaken the following actions to fulfil Council's obligations in relation to modern slavery.

1. For procurements >\$250k, Conditions of Tendering and Conditions of Contract include clauses regarding modern slavery.
2. For procurements >\$250k, Response Schedules include a modern slavery check list for review.
3. Mandatory training has been implemented for Council Officers who are involved in procurement activities.

Take action if or when modern slavery practices are identified and report occurrences to the proper authorities.

Contracts Awarded over \$150,000

Major contracts undertaken 1 July 2022 – 30 June 2023

Contractor	Project	Amount
Watchdog Alarms & Security Pty Ltd	Security Services	Schedule of Rates
ARW Multiquip Pty Ltd	Goulburn Hockey Centre - Amenities	\$2,747,859
Coopers Earthmoving Pty Ltd JCF Demolitions & Earthmoving Pty Ltd Denrith Pty Ltd JLN Contractors Pty Ltd	Maintenance Grading and Gravel Resheeting Panel	Schedule of Rates
ACT Line Marking Pty Ltd Capital Lines and Signs Complete Linemarking Services Pty Ltd	Linemarking Services Panel	Schedule of Rates
Denrith Pty Ltd JCF Demolitions & Earthmoving Pty Ltd JLN Contractors Pty Ltd Form and Pour Construction	Haulage of Bulk Materials Panel	Schedule of Rates
Greenwich Park Holdings Pty Ltd	Supply and Installation of toilet amenities in Goulburn	\$516,068
Denrith Pty Ltd	Road Stabilisation of Gurrundah and Pomeroy Road	\$691,183
Killards Infrastructure Pty Ltd	Goulburn Reuse Scheme WWTP Modification	\$1,864,000
Form & Pour Constructions	Faithfull Street Stormwater Diversion	\$621,639
Killards Infrastructure Pty Ltd	Bradley Street Stormwater Augmentation	\$905,304

Contractor	Project	Amount
Common Ground Trails Pty Ltd	Riverside Park Pump Track and BMX Track	\$600,000
Roadworx Surfacing Pty Ltd	Towrang Road pavement Stabilisation Rehabilitation	\$494,623
Coopers Earthmoving Pty Ltd	Windellama Road Rehabilitation Stage 3	\$821,101
Roadworx Surfacing Pty Ltd	Jerrara Road Heavy Patching	\$2,205,053
Denrith Pty Ltd	Collector Road Heavy Patching	\$909,150
Coopers Earthmoving Pty Ltd	Mogo Road Intersection and Road Rehabilitation Works	\$332,229
Keane Civil and Construction	Common Street Sewer Main Works	\$432,415
Downer EDI Pty Ltd	MR676 Sloane and Grafton Street AC Patch Works	\$559,074
Steel Corp Engineering	Supply and Installation of Steel Works - Goulburn Waste Management Centre	\$463,000
MAS Structures Pty Limited	Supply and Installation of Concreting Works - Goulburn Waste Management Centre	\$269,204
Dekorts Pty Ltd	Water and Wastewater Infrastructure Service and Maintenance Panel	Schedule of Rates
Trility Pty Ltd	Service of Chlorination and Chemical Dosing Systems and Instruments	Schedule of Rates

External Bodies Exercising Council Functions

No external bodies were engaged by Council to run Council facilities during 2022/2023.

Controlling Interest in Companies

Council held no controlling interest in any companies during the reporting period.

Public Interest Disclosure

Under Section 31 of the *Public Interest Disclosures Act 1994*, Council must prepare an annual report on its obligations under this Act, within four months after the end of each reporting year.

1. The number of public officials who have made a public interested disclosure to Council = 1
2. The number of public interest disclosures received by Council in total = 1
3. The number of public interest disclosures that relate to corrupt conduct = 0
4. The number of public interest disclosures that relate to local government pecuniary interest contraventions = 0
5. The number of public interest disclosures finalised by Council = 1

Council's Internal Reporting Policy establishes an internal reporting system to encourage and facilitate the reporting of public interest disclosures of corrupt conduct, maladministration, serious and substantial waste, government information contravention and local government pecuniary interest contravention.

Actions taken to ensure that staff awareness responsibilities are met under Section 6E (1) (b) of the Act include the following:

- Induction program for new staff
- Internal reporting included as part of Council's mandatory Code of Conduct training
- Links to external investigating authorities from Policy
- Refresher Code of Conduct training

S125 Access to Information Statistical Report (Government Information (Public Access) Act 2009)

Section 125 of the *Government Information (Public Access) Act* (GIPA Act) requires Council to annually report on its obligations under the GIPA Act. Clause 7 and Schedule 2 of the *Government Information (Public Access) Regulation 2009* outlines what must be included in the report. Council will meet its reporting obligations under the GIPA Act through inclusion in Council's organisational Annual Report.

In accordance with Section 7(3) of the GIPA Act, Council must review its program for the release of government information to identify the kinds of information held by Council that should be made available in the public interest and that can be made publicly available without imposing unreasonable additional costs on the agency. This review must be undertaken at least once every 12 months.

In 2022 – 2023 Council’s ongoing program for the proactive release of information involved requests for information being allocated to a specific department or referred to the Access to Information Officer. Requests for information, other than open access, were assessed using a checklist that assists staff in determining release:

- Owner of information
- Authority to release information
- Public interest – refer to Access to Information Officer
- Personal information
- Third party information – consent or easily redacted
- Copyright – consult
- Resources to search for and obtain information

During the reporting period, we reviewed this program by:

- Reviewing all requests for information to identify any information that could be made publicly available via proactive release.
- Consultation with staff to determine the types and categories of information frequently requested to identify any information that would be appropriate for proactive release. This consultation is facilitated by Access to Information training sessions for staff, customised staff team information sessions and by ongoing general consultation as part of the operations of the organisation.

As a result of this review no new information, in addition to those released in previous years, was identified to be proactively released.

Statistical Information About Access Applications

Schedule 2 of the Government Information Public Access (GIPA) Regulation sets out, in table formats, the statistical information that is required to be included in Council's annual report on GIPA obligations. These are as follows:

Table A: Number of applications by type of applicant and outcome*								
	Access granted in full	Access granted in part	Access refused in full	Information not held	Information already available	Refuse to deal with application	Refuse to confirm/deny whether information is held	Application withdrawn
Media	-	-	-	-	-	-	-	-
Members of Parliament	-	-	-	-	-	-	-	-
Private sector business	-	2	-	2	-	2	-	7
Not for profit organisations or community groups	-	-	-	-	-	-	-	-
Members of the public (application by legal representative)	-	2	-	-	-	-	-	-
Members of the public (other)	-	1	-	2	1	1	-	9

* More than one decision can be made in respect of a particular access application. If so, a recording must be made in relation to each such decision. This also applies to Table B.

Table B: Number of applications by type of application and outcome								
	Access granted in full	Access granted in part	Access refused in full	Information not held	Information already available	Refuse to deal with application	Refuse to confirm/deny whether information is held	Application withdrawn
Personal information applications*	-	-	-	-	-	-	-	-
Access applications (other than personal information applications)	-	5	-	4	1	3	-	16
Access applications that are partly personal information applications and partly other	-	-	-	-	-	-	-	-

* A **personal information application** is an access application for personal information (as defined in clause 4 of Schedule 4 of GIPA) about the applicant (the applicant being an individual).

Table C: Invalid Applications	
Reason for invalidity	No. of applications
Application does not comply with formal requirements (section 41 of GIPA Act)	11
Application is for excluded information of the agency (section 43 of GIPA Act)	-
Application contravenes restraint order (section 110 of GIPA Act)	-
Total number of invalid applications received	11
Invalid applications that subsequently became valid applications	8

Table D: Conclusive presumption of overriding public interest against disclosure - matters listed in Schedule 1 to GIPA Act

	Number of times consideration used*
Overriding secrecy laws	-
Cabinet information	-
Executive Council information	-
Contempt	-
Legal professional privilege	-
Excluded information	-
Documents affecting law enforcement and public safety	-
Transport safety	-
Adoption	-
Care and protection of children	-
Ministerial code of conduct	-
Aboriginal and environmental heritage	-
Information about complaints to Judicial Commission	-
Information about authorised transactions under Electricity Network Assets (Authorised Transactions) Act 2015	-
Information about authorised transaction under Land and Property Information NSW (Authorised Transaction) Act 2016	-

*More than one public interest test consideration may apply in relation to a particular access application, and if so, each such consideration is to be recorded (but only once per application). This also applies in relation to Table E.

Table E: Other public interest considerations against disclosure – matters listed in table to Section 14 of GIPA Act

	Number of occasions when application not successful
Responsible and effective government	1
Law enforcement and security	
Individual rights, judicial processes and natural justice	4
Business interests of agencies and other persons	-
Environment, culture, economy and general matters	-
Secrecy provisions	-
Exempt documents under interstate Freedom of Information legislation	-

Table F: Timeliness

	Number of applications
Decided within the statutory timeframe (20 days plus any extensions)	13
Decided after 35 days (by agreement with applicant)	-
Not decided within time (deemed refusal)	-
Total	13

Table G: Number of applications reviewed under Part 5 of GIPA Act (by type of review and outcome)

	Decision Varied	Decision Upheld	Total
Internal Review	-	-	-
Review by Information Commissioner*	-	-	-
Internal review following recommendation under section 93 of GIPA Act	-	-	-
Review by NCAT	-	1	1
Total	-	1	1

* The Information Commissioner does not have the authority to vary decisions but can make recommendations to the original decision-maker. The data in this case indicates that a recommendation to vary or uphold the original decision has been made by the Information Commissioner.

Table H: Applications for review under Part 5 of GIPA Act (by type of applicant)

	Number of applications for review
Applications by access applicants	1
Applications by persons to whom information the subject of access application relates (see Section 54 of GIPA Act)	-

Table I: Applications transferred to other agencies under Division 2 Part 4 of the Act (by type of transfer)

	Number of applications for review
Agency-initiated transfers	-
Applicant-initiated transfers	-

State of the Environment Report

State of Environment reporting requirements are part of the Integrated Planning & Reporting Framework. The intent is that the environmental objectives identified in Council's Community Strategic Plan (CSP) are to be measured by the SoE.

Council's annual report in the year of an election must include a State of Environment Report that;

- Reports as to the state of the environment in the local government area in relation to such environmental issues as may be relevant to the objectives for the environment established by the Community Strategic Plan.
- Establishes relevant environmental indicators for each environmental objective.
- Reports on and update trends in each such environmental indicator.
- Identifies all major environmental impacts (being events and activities that have a major impact on environmental objectives).
- Is prepared in accordance with the guidelines issued under section 406.
- The report may be prepared as part of a regional report.

Council elections were held in December 2021.

The Planning and Reporting Manual (DLG 2010) notes that the SoE reporting process:

- Should enable Councils to focus resources on issues of concern to their community and where Council may influence their management.
- Will integrate with and inform the Community Strategic Plan.

- Strongly encourages regional partnerships to draw from a wide range of data and develop shared arrangements for environmental monitoring to achieve efficiencies and more consistent environmental monitoring and reporting across NSW.
- May continue to apply the Pressure-State-Response model to report on indicators.
- Must consult with the community in particular environmental groups when preparing the report.

General Assessment

The State of the Environment in Goulburn Mulwaree is considered under the broad themes of atmosphere, water, land, biodiversity and human settlement.

Atmosphere - Is our air quality good?

Goulburn Mulwaree enjoys generally clean air, and a pleasant climate with mild to hot summers and cool winters. Its inland position ensures a wider temperature range than coastal areas and restricts rainfall.

The lack of heavy industry or concentrations of vehicles ensures that pollutant loadings are relatively low and are usually dispersed; however, higher concentrations of pollutants may occur briefly in small areas - for example close to busy roads during peak traffic periods. Occasionally inversions occur in valleys on clear winter nights, which can trap gaseous and fine particle pollutants, such as wood smoke from domestic fireplaces and stoves and abattoir odours, close to ground level.

The Protection of the Environment Operations Act 1997 No 156 regulates the output of pollutants from solid fuel heaters. Owners can be issued with an infringement notice if the heater produces excessive smoke; excessive smoke means the emission of a visible plume of smoke from a chimney for

a continuous period of not less than 10 minutes, including a period of not less than 30 seconds when the plume extends at least 10 metres from the point at which the smoke is emitted from the chimney. No notices or warning letters were issued over the 2022/2023 winter period.

NSW Air Quality measures air quality in Goulburn and provides a comparison for the last 6 months of air pollutants, standardising measurements of ozone, carbon monoxide, sulfur dioxide, nitrogen dioxide and airborne particles into one easy-to-understand rating scale, the air quality category (AQC). The air quality for the six months to June 2023 was rated as “good” for Goulburn.

Biodiversity - Are our native plants and animals better or worse off?

Goulburn Mulwaree lies almost wholly in the South-Eastern Highlands bioregion. Vegetation in this bioregion is described as predominantly wet and dry sclerophyll forests, woodland, minor cool temperate rainforest and minor grassland and herbaceous communities. The landforms are typically steep, dissected and rugged ranges, which extends across southern and eastern Victoria and southern NSW.

National Parks and Nature Reserves make up 7% of the Goulburn Mulwaree Council Area; these being the Jerralong Nature Reserve, parts of Morton National Park and Nadgigomar Nature Reserve. State Forest makes up less than 1% of the area.

Overall, it is estimated that the condition of native flora and fauna is largely the same as previous years. Many of the trees & other vegetation that was affected by drought in the previous reporting period have recovered to some extent. Some vegetation in dryer locations did not recover. Given that the season has been wetter vegetation will re-establish from seed & potentially sucker from root stock. It is yet to be seen what the long-term result will be.

Development has the potential to have an incremental effect on the natural environment. The recently implemented Biodiversity Conservation Act & Local Land Services Act regulate the effects of development on the environment. These Acts aim to avoid, minimise & offset impacts on the environment.

During this reporting period the protection of native plants and animals within Goulburn Mulwaree through the management of clearing was largely the responsibility of the Department of Planning Industry & Environment (DPIE). DPIE manages National Parks, and the South East Local Land Services (SELLS) that includes Goulburn Mulwaree LGA. Prior to the formation of SELLS Goulburn Mulwaree LGA was covered by three Catchment Management Authorities that prepared Catchment Action Plans for the area. These documents contain information about the location, extent and quality of remnant vegetation.

Council engaged a consultant to prepare a Biodiversity Strategy for the Local Government Area. The information from the study was included in the Local Environmental Plan (LEP). The outcomes of the Biodiversity Strategy are used in the assessment of Development Applications and the management of biodiversity by Council and South East Local Land Services. Council also worked with DPIE to undertake an on-ground assessment and subsequent mapping of the vegetation around Goulburn city & Towrang. The mapping will be used to provide greater accuracy & to update Local Environmental Plan 2009 (LEP).

In relation to protection of vegetation the LEP states that Council approval is required before any trees and shrubs can be removed from within a listed heritage item or from an item located within a Heritage Conservation Area. In addition, NSW State Government Threatened Species Legislation protects Endangered Ecological Communities (EEC) such as Yellow Box / Blakely's Red Gum woodland and Tablelands Snow Gum, Black Sallee, Candlebark and Ribbon Gum Grassy Woodland.

The Biodiversity Conservation Act 2016, Local Land Services Act 2016, and the State Environmental Planning Policy (vegetation in Non-Rural Areas) 2017 revised the way that biodiversity (flora & fauna) is managed.

For applications that involve clearing of native vegetation associated with Development Council is the approval authority. Council is also the approval authority for clearing not associated with development, in non-rural areas where the thresholds set by the legislation are not exceeded. Where the clearing thresholds are exceeded the Native Vegetation Panel is the approval authority.

Council's Development Control Plan section 3.9 includes the requirements of Part 3 of the State Environmental Planning Policy (Vegetation in Non-Rural Areas) 2017. This means that Council consent is required prior to removing or pruning vegetation over 3.0m in height or with a canopy greater than 3.0m in width.

Council adopted a Vegetation Removal Offset Policy. To offset the environmental loss of removed vegetation the fees charged for inspections are used to plant vegetation on Council owned land. This includes the loss of vegetation due to Council's own activities. The species planted are predominantly local native species.

The illegal clearing of native vegetation by rural property owners is increasing. Where needed Council fines individuals or companies that remove vegetation without consent. Council is also party to prosecutions for more serious matters.

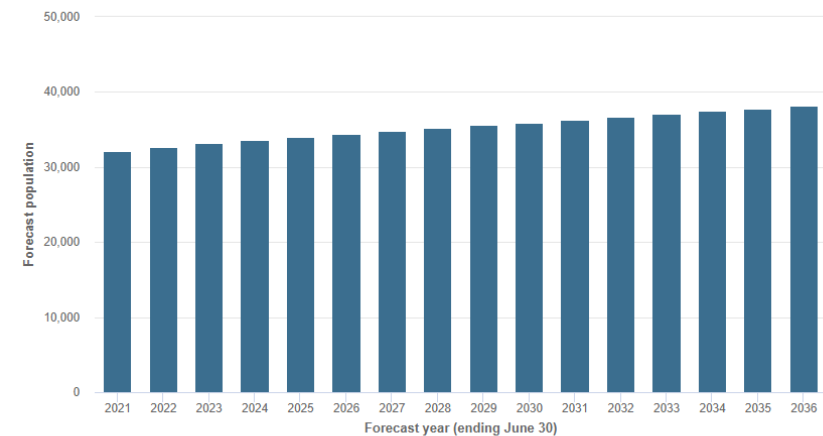
Human settlement - How well do we provide for our human populations?

The Australian Bureau of Statistics records the population of Goulburn Mulwaree in 2022 as 32,394 people which is an increase over the previous year of 256 people. The residents of Goulburn Mulwaree are distributed between Goulburn city residents (approximately 76%) and residents in the villages and rural areas (approximately 24%). Population growth continues to be stable with forecast change between 2023 – 2036 being 15.3% as detailed in the graph below.

Forecast population

Goulburn Mulwaree

export

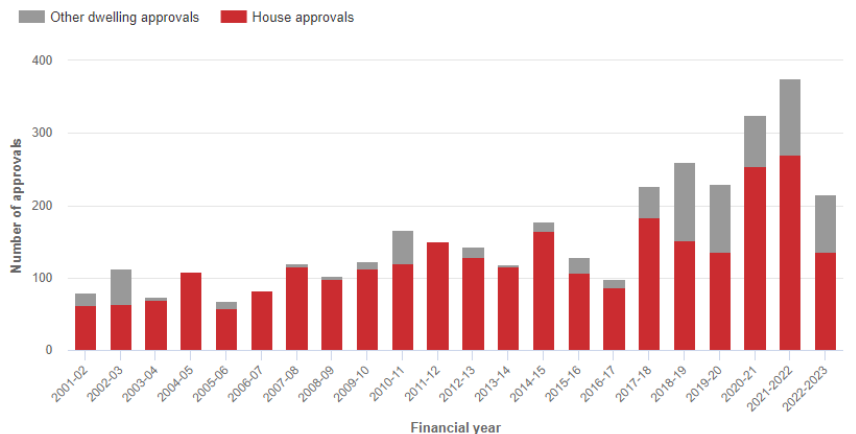


Source: Population and household forecasts, 2021 to 2036, prepared by [id](#) (informed decisions), March 2023.

Residential approvals returned to normal levels in 2022-2023 compared to the previous record high years (2020-2021 and 2021 – 2022) as indicated in the graph below. The record high levels of applications reflected the period before inflation increased, the pandemic “tree change” phenomenon and available government subsidies. The phasing/timing of large subdivision releases such as Teneriffe will also result in a mirroring rise in application numbers and can have a disproportionate effect on normal levels of approvals when they occur.

Residential building approvals

Goulburn Mulwaree



Source: Australian Bureau of Statistics, Building Approvals, Australia (8731.0). Compiled and presented by id (informed decisions).

The above graph also suggests a gradual increase in the diversity of housing stock with a larger percentage of approvals for dwellings other than houses.

Recreational activities are well provided for in Goulburn, with substantial sports facilities spread throughout the city. There is a concentration of fields at Carr Confoy Park on the flood plain adjacent to the Mulwaree Ponds. Sports catered for include cricket, netball and touch football. The Goulburn Pony Club lease's adjacent Council land on the river flats at Eastgrove for their events.

Council has made a substantial investment in recent years on a series of shared pathways alongside the Wollondilly and Mulwaree Rivers. This pathway now extends for approximately 20kms and a further 5kms is proposed to be constructed over the next financial year (2023-24).

There are numerous soccer fields located at Cookbundoon Sporting Complex in Bradfordville at the north of Goulburn. Athletics takes place at Hudson Park which is also located in Bradfordville.

The Recreation Area caters for numerous sporting and recreational groups including rodeo, basketball, poultry, greyhound racing, equestrian, indoor hockey & trotting. The Recreation Area is also home to popular annual events such as the Goulburn Show and the Rotary Swap Meet.

Swimming is catered for at the Goulburn Aquatic Centre (GAC) that is located on the periphery of Victoria Park. The GAC has both indoor and outdoor pools so that residents and visitors can swim year round. The GAC underwent a major upgrade with the construction of a new indoor pool hall. The new facilities include 3 heated pools, a children's wet play area and a gym.

Council purchased the Hockey Fields on the corner of Finlay Road & Sports Way that were formerly part of the Workers Club Arena. The facility provides a base for Goulburn Hockey with the goal of holding tournaments that draw visitors to the region. Council upgraded the facility.

Some of the rural villages have facilities such as playing fields and tennis courts. Council's role is to provide the infrastructure for the use of community groups.

There are a number of motor racing facilities in the LGA including Wakefield Park on Braidwood Road south of Goulburn, Pheasant Wood Circuit south of Marulan on Jerrara Road and Goulburn Speedway & Goulburn Motor Cycle Club both located on Mount Grey at the north east of Goulburn. These facilities provide opportunities for local motorsport lovers and also draw large numbers of visitors from within NSW and other states. All these facilities have the potential to generate significant noise levels. Council is working with the facility owners to put in place measures to reduce noise problems.

In terms of other noise generation for the Goulburn Mulwaree area, Council assesses Development Applications against state legislation and guidelines to maintain a reasonable amenity. If residents lodge noise complaints they are dealt with by Council's Compliance section.

Goulburn has a Visitor Information Centre and supports the tourism website www.goulburnaustralia.com. This site facilitates and provides information on events such as markets, food fairs, exhibitions and art gallery events. Council has a mobile information van that attends events to its visitor info service.

Community support is generous in Goulburn with many charities supported by a network of volunteers. Examples of high profile events include the Convoy for Kids, Lilac Time festival and monthly market and the NSW Cancer Council Relay for Life.

Cultural activities in Goulburn Mulwaree encompass the visual and performing arts. Goulburn Regional Art Gallery, located in the Civic Centre, is a major resource of visual art and craft practice and education for the region. The Gallery's annual program of exhibitions fosters and promotes regional artists and craftspeople and engages the general. The Gallery's educational activities, including an outreach program, encourage broad community participation. The performing arts are highlighted through the activities of the Lieder Theatre which has a strong youth focus, and the Hume Conservatorium (formerly Goulburn Regional Conservatorium of Music) provides community access to music education and performance. Southern Tablelands Arts promotes arts and culture generally throughout the Region.

Council restored and redeveloped the former Town Hall in Auburn Street into the Goulburn Performing Arts Centre. The GPAC caters for various theatrical & musical productions that are both locally produced & touring. The opening of the GPAC was slightly delayed from the original completion date due to Covid restrictions on construction sites.

The Goulburn Mulwaree Library is located in the Council Civic Centre. The library is a place to browse, study, and access technology or to simply relax and listen to music or read the current newspapers. A wide range of resources and services, both in the library and online, are provided to meet the information, recreational and cultural needs of the community. Free WiFi is provided.

Heritage protection is a high priority for Goulburn Mulwaree. Council's Local Environmental Plan (LEP) 2009 includes Heritage Conservation Areas with the majority of Heritage Items being located towards the center of Goulburn city. The LEP includes 611 individual items and groups of items of heritage significance that are listed on Schedule 5 – Environmental Heritage.

Heritage grants are made available annually to residents of Goulburn Mulwaree. The purpose of the grant funding is to encourage the conservation of heritage items identified in Council's LEP Schedule 5, Environmental Heritage or items located in heritage conservation areas. Projects are eligible if they involve external repair, maintenance or reinstatement of missing details on heritage buildings or items. See information on the heritage grant scheme elsewhere in this annual report.

Council also has a CBD grants scheme. In 2022-2023 the CBD grants targeted Auburn Street, Bourke Street & Sloane Street properties located between Bradley Street at the north and Clinton Street to the south. The purpose of the grants is to assist owners to improve the appearance of the CBD. See information on the CBD grant scheme elsewhere in this annual report.

Council engages the services of a consultant Heritage Advisor to provide advice on development applications, urban design and to assist in the administration of the heritage grants. An Archaeological Management Plan was completed in 2010 and an Aboriginal Heritage Study was completed in 2012. In 2018 consultants completed an update of Council's Heritage Study. The study was adopted by Council in 2018 and its recommendations have been integrated into the LEP. Council revised the Schedule 5 list of Items of Environmental Heritage to ensure that the property descriptions are correct.

Land - Has land quality improved and are we using our land sustainably?

The Goulburn Mulwaree Council area covers an area of 3,298 km². The vast majority of this land is used for rural purposes.

Land use change has accelerated in recent years with many new approvals for additional residential, industrial & extractive industry development. Generally, these developments have taken place on land that has long been earmarked for such development and hence these applications have not resulted in the loss of open space. Several sites have also been highlighted for the provision of new services and infrastructure to allow for additional residential and industrial growth. The expansion of the highway service centre in South Goulburn is progressing rapidly. Development of the former Kenmore Hospital site is progressing slowly.

The State Government's South East and Tablelands Regional Plan 2036 identifies the key issues for the South Eastern Tablelands Region. The plan's Vision is for "A borderless region in Australia's most geographically diverse natural environment with the nation's capital at its heart". The goals to achieve the vision are; A connected and prosperous economy; A diverse environment interconnected by biodiversity corridors; Healthy and connected communities and Environmentally sustainable housing choices. Planning Proposals and any Strategic Planning documents prepared by Council will need to align with the Regional Plan.

Council completed a Local Strategic Planning Statement (LSPS) that provides strategic directions for growth targets, growth areas, sustainable development and planning instruments and policies. The LSPS supersedes the Strategy Plan 2020.

The LSPS takes precedence over The Tablelands Community Strategic Plan (CSP) for planning matters and is to be considered in the assessment of Planning Proposals and Development Applications as follows:

- For Development Applications this means we need to put the LSPS planning priorities into the Council Report template instead of the CSP, the LSPS is not an environmental planning instrument (EPI) so does not fall within the Section 4.15 criteria for evaluation under the

EPA Act, 1979, but may inform some evaluation of social, environmental or economic impact of a proposal.

- For Planning Proposals, the LSPS is a specific consideration in a proposal which must be addressed in the document.

Ultimately the LSPS is intended to inform the Strategic Planning Program and LEP /Development Control Plan preparation. It may also assist with grant applications and providing a framework around our priorities for the future.

Land quality issues within rural areas have had a particular emphasis on issues relating to the identification and removal of priority weeds (formerly called noxious weeds), fertiliser spreading and intensive agriculture requiring substantial staff attention. Council is addressing such rural land use conflicts as part of the Strategy Plan by working with the community to develop and implement techniques to avoid conflicts.

Council has an active Biosecurity Weeds Section that is assisting to improve land quality by identifying sites containing priority weeds and requiring that landholders take action to meet their Biosecurity Duties under the Biosecurity Act 2015. Council has a weed spaying and management program on land that it controls.

Council runs a licenced landfill in Goulburn and a small landfill at Marulan, plus a transfer station at Tarago.

The main putrescible and solid Waste Management Centre at 100 Sinclair Street, Goulburn has been in operation since 1906, and is situated in a valley next to Mount Gray. The Waste Management Centre is open to use by all residents of Goulburn Mulwaree. The site accepts asbestos waste from within Goulburn Mulwaree. The site has an area exceeding 100 hectares and has an active tipping area of less than one hectare. The site has a potential landfill life span until around 2055 if new cells area added.

Council's waste minimisation strategies not only benefit the environment but also extend the life of the Waste Management Centre.

To address rural waste issues, rural residents are supplied a waste card that allows 52 visits to a Waste Management Centre each year plus up to two cubic metres of bulky waste may be disposed of on one occasion each year. Within the rural areas of Goulburn Mulwaree, Council operates the 6.7 hectare landfill site at Marulan, plus the waste transfer station at Tarago. Both sites are fenced and manned. The Marulan landfill has a life span estimated to be more than 40 years.

Council runs in-house waste collection services in Goulburn City and Marulan township, including organic waste, recycling and residual waste collection. The green waste collection service minimises the amount of organic materials entering the waste stream and Council undertakes composting of green waste at Goulburn Waste Management Centre. The compost is available for sale to the public and is used on Council projects.

Council also undertakes waste education initiatives, such as educating school children about the importance of waste reduction utilising the recycling mascot 'Benjamin'.

Progress towards sustainability – Including Water

Council's adopted Integrated Planning and Reporting is underpinned by the key consideration of sustainability and has as one of the six key goals "a sustainable environment". Areas dealt with are:

- Land management
- Natural resource management
- Open spaces

In early 2007, Council inserted a sustainability focus into its organisational structure. Driving improvements in sustainability is a whole of Council responsibility. A Sustainability Working Group made up of representatives from across the Council organisation prepared a Corporate Sustainability Action Plan with annual actions.

Council is currently reviewing the Sustainability Action Plan.

Initiatives include;

- Update Council's successful Rural Living Handbook with Sydney Water to inform rural landholders of land management issues, requirements and best practice
- Undertake a Sustainability Health Check
- Council's Sustainability Action Plan established the following carbon reduction target; Reduce energy consumption year on year, with the target being a reduction of 10% by 2030 based on 2015 usage
- Engage a consultant to measure Council's carbon production and report on anomalies in energy use so that these can be investigated and rectified if necessary
- Installation of solar electricity generating systems (photovoltaic solar cells) on a number of its buildings such as the Civic Centre, Visitors Information Centre, Aquatic Centre, Waste management Centre & at Council's Works Depot for a total of 100kW of solar power generation. These systems reduce the amount of electricity Council has to draw from the grid and consequently this reduces Council's carbon footprint. In the medium term they also reduce Council's financial outlay as the payback period for a PV system is approximately 5-7 years.

Council's work on the 2020 Strategy Plan also had a strong sustainability theme. Key emerging issues that require direction over the coming years include:

- The need for services to support an ageing population
- The importance of a secure reliable water supply to encourage and support the growth of residential, industrial and commercial development
- Diversification of the economic base to provide job opportunities for residents and to attract a greater working age population
- The need to protect important agricultural land and plan rural residential development through control of rural residential subdivision to produce better outcomes for the agriculture industry and for residents
- Need for Council to undertake clear and transparent decision making and communicate effectively and consistently with local rate payers
- The need to balance the desire to maintain a quiet rural lifestyle and opportunities for growth due to the strategic location of Goulburn Mulwaree, between Sydney and Canberra.

Council completed a review of its Climate Change Assessment Adaptation Plan. The plan includes prioritised actions to reduce Council's exposure to Climate Change risks.

Council continued work on the long term water strategy including Integrated Water Cycle Management principles. Funding to a total of \$50 million through subsidies and loans was established for the planning and construction of the Highlands Source Project in 2009/10. The Water Management Strategy sets the future direction of an integrated approach to deal with the issues of water supply, effluent disposal and stormwater management to the year 2030.

Wastewater Treatment

A new Waste Water Treatment Plant was completed in Goulburn in November 2018. The new WWTP dramatically improves the quality of water that is released into the Wollondilly River. The process was updated

from a Trickling Filter Plant to a Membrane Bioreactor that is currently designed to treat an Average Dry Weather Flow of 6.0ML/day. The effluent quality is required to meet the concentration limits within the EPA Licence for the site.

Goulburn's Wastewater Treatment Plant receives Goulburn's sewage through Council's reticulated sewer network. Prior to the wastewater treatment process, sewage leaves properties, makes its way through gravity fed mains and various pump stations to the Goulburn Wastewater Treatment Plant. From here the stages of wastewater treatment includes preliminary, primary, secondary and tertiary.

The preliminary stage involves inorganic solids and other large objects being separated out of wastewater. This is completed through a step screen and bache classifier/drum screens which the wastewater flows through and filters out these items.

The primary stage involves the separation of settleable organics solids and floatables from the wastewater and the treatment and disposal of these solids. This is completed in the bioreactor through an anoxic zone, which deprives the wastewater from oxygen to simulate microorganism growth. Oxygen is then re-introduced by the use of blowers and diffusion grids; this causes a new form of microorganism to grow that consumes the original microorganisms. This is all completed for biological nutrient removal.

The secondary stage involves the wastewater passing through specifically engineered membranes that pull the effluent out of the mixed liquor. The membranes are designed to only pull water out as they are an extremely fine screen, small enough to only allow water through and prevent solids as well as bacteria from entering the treated effluent. Any mixed liquor that is not treated in this process returns to the bioreactor to begin the process again.

The tertiary stage involves treating effluent through the use of UV lamps and chlorine dosing. Once the effluent has been pulled through the membranes it is transferred to the UV system to be treated, this makes sure that any bacteria remaining in the effluent is neutralised. The majority of the effluent is then discharged through Council's approved discharge point into the Wollondilly River. The quality of the water released into the river is greatly improved over the previous treatment plant. A small amount of treated water is used to wash down the plant, this is treated with chlorine for further disinfection. Currently treated effluent water from the plant is being used to irrigate the Goulburn Race Club's horse racing track and the Cookbundoon Sporting Fields.

Council is progressing with the development of a reticulation system to use treated effluent water that will bolster water resilience within the community through the development and implementation of the Southern Tablelands Water Reuse Infrastructure Scheme (STWRIS). This scheme will provide drought resilience to playing fields and community recreation spaces through the use of high quality treated water for the purpose of irrigation.

A number of parks including Carr Confoy Park, Eastgrove South Park, Victoria Park, Hudson Park & North Park have had irrigation systems installed to use the treated effluent water. The upgrade of the Waste Water Treatment Plant is scheduled for 2023-2024 to modify the storage & pump station. Once completed this system will reduce demand on the potable water network, increase water security and ensure that the Goulburn community enjoys world class facilities and parks all year round.

An energy audit of Council's Civic Centre was carried out by consultants EnCall. The audit recommends prioritised actions to reduce the energy use of the Civic Centre. Improving the efficiency of the lighting and Heating Ventilation & Air Conditioning (HVAC) systems were two of the primary recommendations.

Is our water quality good?

Goulburn Mulwaree measures water quality in our raw and drinking water. Council is responsible for managing our raw water storages, including Pejar Dam, Sooley Dam, Rossi Weir and the water sourced through the Highlands Source Pipeline. Council also manages water quality from the Goulburn and Marulan Water Treatment Plants and their associated networks.

Regular samples are collected by Council officers with the analysis being carried out by an independent laboratory.

The overall water catchment in the Goulburn Mulwaree area also comes under the additional jurisdiction of the Water NSW. Their neutral or beneficial effects criteria (Norbe) for development assists with protection of river water quality.

Is water use increasing or decreasing, and are we providing adequately for the future?

At 30 June 2023 the amount of usable water available to Goulburn is 97.2% of total capacity.

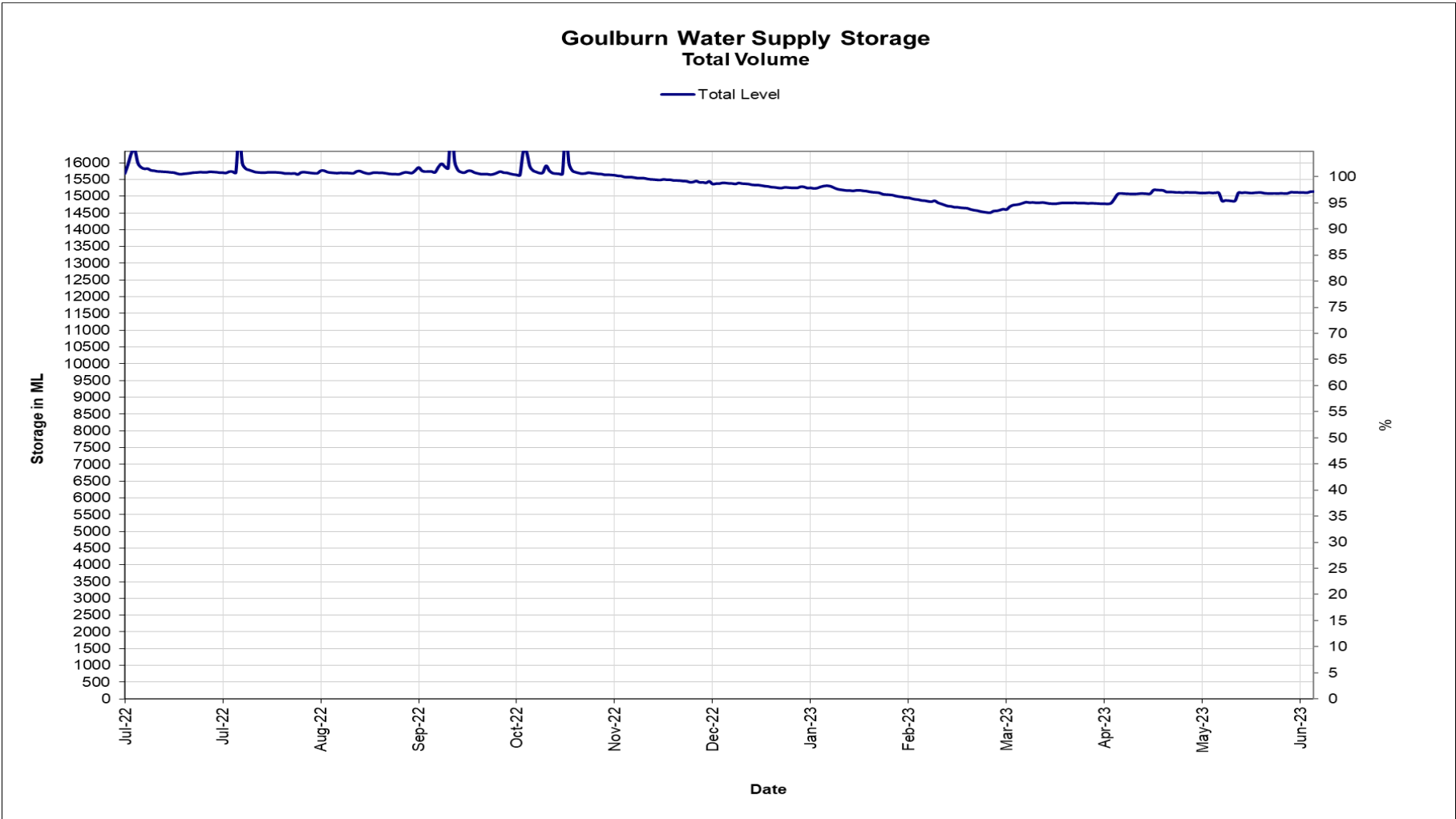
Water consumption in Goulburn continues to be around 8.12ML/day.

Marulan's water usage on average is 259kL/day.

Did you know?

- ✓ In 2022/23 there was 3,066ML water supplied with the maximum daily demand for Goulburn being 14.75ML, and the maximum daily demand for Marulan being 0.54ML.
- ✓ The volume of sewage treated was 2,921ML
- ✓ The length of sewage mains is 326 km
- ✓ There are 11,614 sewer connections

Figure 1 - Goulburn Total Water Storage Capacity.



The storage levels ranged between 93.2% and 100% over the year.

Figure 2 - Goulburn Water Demand Comparison

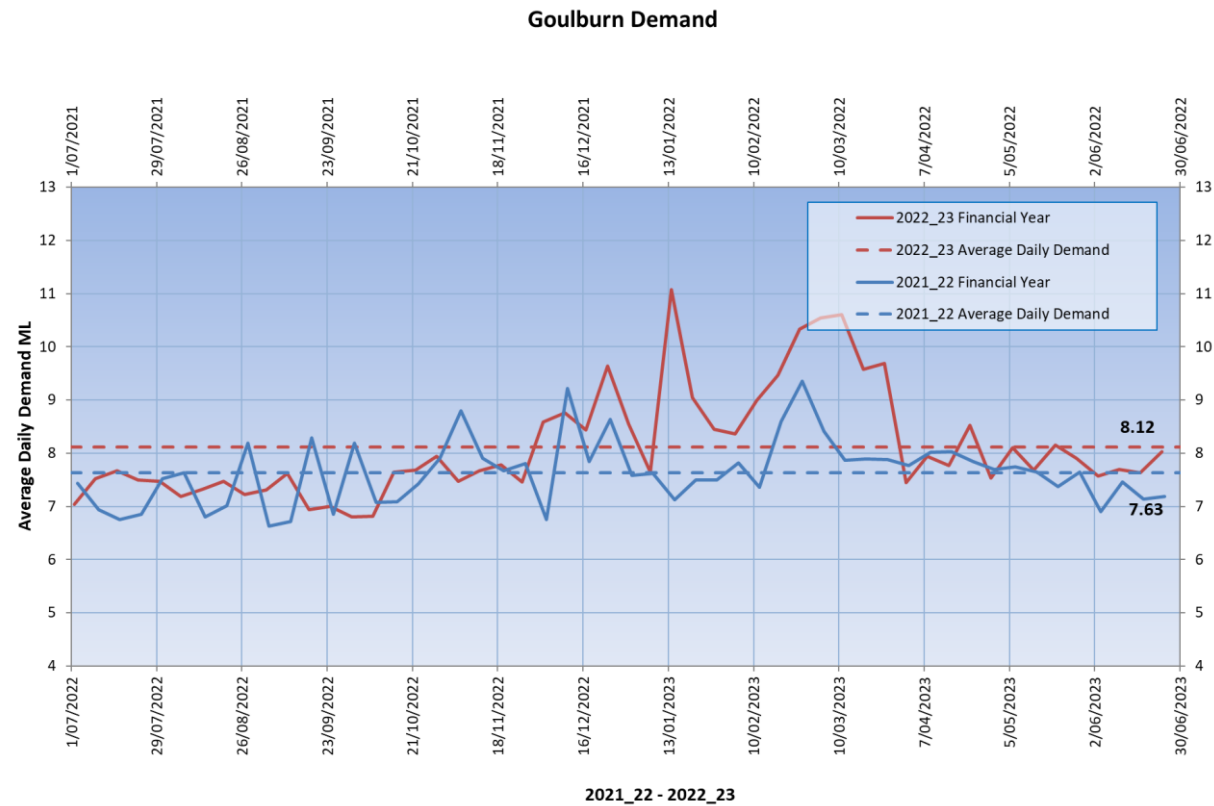


Figure 3 - Marulan Water Demand Comparison

